

## Levelling sets

Steel / Stainless Steel, long version

### SPECIFICATION

#### Types

- Type **A**: without lock nut
- Type **AK**: with lock nut

#### Version in Steel

Steel, 1.7225 (42 CrMo 4V) **ST**  
zinc plated, blue passivated

#### Version in Stainless Steel

Stainless Steel AISI 303  
(X 10 CrNiS 18-9) **NI**

F1: max. total load

F2: max. load after deduction of the max. preload

- for screws  $8.8 \mu = 0.125$  (Steel version)
- for screws  $6.8 \mu = 0.14$  (Stainless Steel version)

### INFORMATION

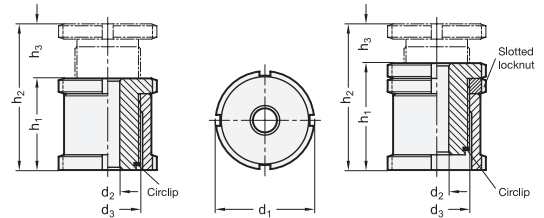
Levelling sets GN 350 are used for levelling and linking operations. They comprise a threaded upper sleeve and a female threaded lower sleeve. The fine thread allows a stepless and precise setting and locking using the C-Spanner DIN 1810 (see page 994). A locking ring serves also as a height limiter for the max. height. Normally this screw is permanently and securely locked by the static load created when the mounting screw is tightened. Should this not be sufficient, the use of a locknut (Type AK) is recommended.

### TECHNICAL INFORMATION

- Stainless Steel characteristics (see page A26)

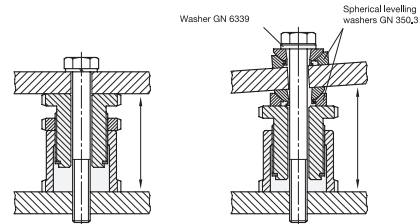
### ACCESSORY

- C-Spanner DIN 1810 (code no. see table)



Type **AK** (with locknut)

Type **A** (without locknut)  
with 2 spherical levelling washers



### GN 350

Description	d1	d2	d3	h1	h2	h3	For screw	Static load F in kN F1	Static load F in kN F2	Code no. for C-Spanner	
GN 350-25-6,6-A-ST	25	6,6	M 15 x 1	28	43	15	M 6	40	30,7	DIN 1810-A25-28	68
GN 350-32-6,6-A-ST	32	6,6	M 20 x 1	35	55	20	M 6	65	55,7	DIN 1810-A30-32	161
GN 350-32-9-A-ST	32	9	M 20 x 1	35	55	20	M 8	65	48	DIN 1810-A30-32	152
GN 350-32-11-A-ST	32	11	M 20 x 1	35	55	20	M 10	65	37,9	DIN 1810-A30-32	144
GN 350-45-11-A-ST	45	11	M 30 x 1,5	42	67	25	M 10	120	92,9	DIN 1810-A45-50	372
GN 350-45-13,5-A-ST	45	13,5	M 30 x 1,5	42	67	25	M 12	120	80,4	DIN 1810-A45-50	397
GN 350-45-17,5-A-ST	45	17,5	M 30 x 1,5	42	67	25	M 16	120	45,5	DIN 1810-A45-50	318
GN 350-58-17,5-A-ST	58	17,5	M 40 x 1,5	54	86	32	M 16	210	136	DIN 1810-A58-62	782
GN 350-58-22-A-ST	58	22	M 40 x 1,5	54	86	32	M 20	210	90	DIN 1810-A58-62	730
GN 350-58-26-A-ST	58	26	M 40 x 1,5	54	86	32	M 24	210	37	DIN 1810-A58-62	666
GN 350-70-22-A-ST	70	22	M 50 x 1,5	66	106	40	M 20	330	210	DIN 1810-A68-75	1440
GN 350-70-26-A-ST	70	26	M 50 x 1,5	66	106	40	M 24	330	157	DIN 1810-A68-75	1360
GN 350-70-33-A-ST	70	33	M 50 x 1,5	66	106	40	M 30	330	53	DIN 1810-A68-75	1200
GN 350-80-26-A-ST	80	26	M 60 x 2	76	126	50	M 24	495	322	DIN 1810-A80-90	2167
GN 350-80-33-A-ST	80	33	M 60 x 2	76	126	50	M 30	495	218	DIN 1810-A80-90	2000
GN 350-80-39-A-ST	80	39	M 60 x 2	76	126	50	M 36	495	101	DIN 1810-A80-90	1850

### GN 350

Description	d1	d2	d3	h1	h2	h3	For screw	Static load F in kN F1	Static load F in kN F2	Code no. for C-Spanner	⚖️
GN 350-25-6.6-AK-ST	25	6.6	M 15 x 1	33	43	10	M 6	40	30.7	DIN 1810-A25-28	78
GN 350-32-6.6-AK-ST	32	6.6	M 20 x 1	41	55	14	M 6	65	55.7	DIN 1810-A30-32	179
GN 350-32-9-AK-ST	32	9	M 20 x 1	41	55	14	M 8	65	48	DIN 1810-A30-32	172
GN 350-32-11-AK-ST	32	11	M 20 x 1	41	55	14	M 10	65	37.9	DIN 1810-A30-32	166
GN 350-45-11-AK-ST	45	11	M 30 x 1.5	49	67	18	M 10	120	92.9	DIN 1810-A45-50	409
GN 350-45-13.5-AK-ST	45	13.5	M 30 x 1.5	49	67	18	M 12	120	80.4	DIN 1810-A45-50	393
GN 350-45-17.5-AK-ST	45	17.5	M 30 x 1.5	49	67	18	M 16	120	45.5	DIN 1810-A45-50	365
GN 350-58-17.5-AK-ST	58	17.5	M 40 x 1.5	63	86	23	M 16	210	136	DIN 1810-A58-62	882
GN 350-58-22-AK-ST	58	22	M 40 x 1.5	63	86	23	M 20	210	90	DIN 1810-A58-62	823
GN 350-58-26-AK-ST	58	26	M 40 x 1.5	63	86	23	M 24	210	37	DIN 1810-A58-62	762
GN 350-70-22-AK-ST	70	22	M 50 x 1.5	77	106	29	M 20	330	210	DIN 1810-A68-75	1595
GN 350-70-26-AK-ST	70	26	M 50 x 1.5	77	106	29	M 24	330	157	DIN 1810-A68-75	1516
GN 350-70-33-AK-ST	70	33	M 50 x 1.5	77	106	29	M 30	330	53	DIN 1810-A68-75	1344
GN 350-80-26-AK-ST	80	26	M 60 x 2	87	126	39	M 24	495	322	DIN 1810-A80-90	2200
GN 350-80-33-AK-ST	80	33	M 60 x 2	87	126	39	M 30	495	218	DIN 1810-A80-90	2140
GN 350-80-39-AK-ST	80	39	M 60 x 2	87	126	39	M 36	495	101	DIN 1810-A80-90	1840

### GN 350-NI

**STAINLESS STEEL**

Description	d1	d2	d3	h1	h2	h3	For screw	Static load F in kN F1	Static load F in kN F2	Code no. for C-Spanner	⚖️
GN 350-25-6.6-A-NI	25	6.6	M 15 x 1	28	43	15	M 6	27.1	20.2	DIN 1810-A25-28	69
GN 350-32-6.6-A-NI	32	6.6	M 20 x 1	35	55	20	M 6	43.4	36.5	DIN 1810-A30-32	163
GN 350-32-9-A-NI	32	9	M 20 x 1	35	55	20	M 8	43.4	30.8	DIN 1810-A30-32	154
GN 350-32-11-A-NI	32	11	M 20 x 1	35	55	20	M 10	43.4	23.4	DIN 1810-A30-32	140
GN 350-45-11-A-NI	45	11	M 30 x 1.5	42	67	25	M 10	84	64	DIN 1810-A45-50	460
GN 350-45-13.5-A-NI	45	13.5	M 30 x 1.5	42	67	25	M 12	84	54.8	DIN 1810-A45-50	390
GN 350-45-17.5-A-NI	45	17.5	M 30 x 1.5	42	67	25	M 16	84	28.9	DIN 1810-A45-50	320
GN 350-58-17.5-A-NI	58	17.5	M 40 x 1.5	54	86	32	M 16	148	92.9	DIN 1810-A58-62	791
GN 350-58-22-A-NI	58	22	M 40 x 1.5	54	86	32	M 20	148	59	DIN 1810-A58-62	733
GN 350-58-26-A-NI	58	26	M 40 x 1.5	54	86	32	M 24	148	20.3	DIN 1810-A58-62	668
GN 350-70-22-A-NI	70	22	M 50 x 1.5	66	106	40	M 20	225	136	DIN 1810-A68-75	1452
GN 350-70-26-A-NI	70	26	M 50 x 1.5	66	106	40	M 24	225	97.3	DIN 1810-A68-75	1370
GN 350-70-33-A-NI	70	33	M 50 x 1.5	66	106	40	M 30	225	20.6	DIN 1810-A68-75	1210
GN 350-80-26-A-NI	80	26	M 60 x 2	76	126	50	M 24	323	195.3	DIN 1810-A80-90	2180
GN 350-80-33-A-NI	80	33	M 60 x 2	76	126	50	M 30	323	118.6	DIN 1810-A80-90	1875
GN 350-80-39-A-NI	80	39	M 60 x 2	76	126	50	M 36	323	38.2	DIN 1810-A80-90	1683
GN 350-25-6.6-AK-NI	25	6.6	M 15 x 1	33	43	10	M 6	27.1	20.2	DIN 1810-A25-28	79
GN 350-32-6.6-AK-NI	32	6.6	M 20 x 1	41	55	14	M 6	43.4	36.5	DIN 1810-A30-32	181
GN 350-32-9-AK-NI	32	9	M 20 x 1	41	55	14	M 8	43.4	30.8	DIN 1810-A30-32	174
GN 350-32-11-AK-NI	32	11	M 20 x 1	41	55	14	M 10	43.4	23.4	DIN 1810-A30-32	167
GN 350-45-11-AK-NI	45	11	M 30 x 1.5	49	67	18	M 10	84	64	DIN 1810-A45-50	411
GN 350-45-13.5-AK-NI	45	13.5	M 30 x 1.5	49	67	18	M 12	84	54.8	DIN 1810-A45-50	405
GN 350-45-17.5-AK-NI	45	17.5	M 30 x 1.5	49	67	18	M 16	84	28.9	DIN 1810-A45-50	377
GN 350-58-17.5-AK-NI	58	17.5	M 40 x 1.5	63	86	23	M 16	148	92.9	DIN 1810-A58-62	893
GN 350-58-22-AK-NI	58	22	M 40 x 1.5	63	86	23	M 20	148	59	DIN 1810-A58-62	834
GN 350-58-26-AK-NI	58	26	M 40 x 1.5	63	86	23	M 24	148	20.3	DIN 1810-A58-62	775
GN 350-70-22-AK-NI	70	22	M 50 x 1.5	77	106	29	M 20	225	136	DIN 1810-A68-75	1607
GN 350-70-26-AK-NI	70	26	M 50 x 1.5	77	106	29	M 24	225	97.3	DIN 1810-A68-75	1426
GN 350-70-33-AK-NI	70	33	M 50 x 1.5	77	106	29	M 30	225	20.6	DIN 1810-A68-75	1354
GN 350-80-26-AK-NI	80	26	M 60 x 2	87	126	39	M 24	323	195.3	DIN 1810-A80-90	2356
GN 350-80-33-AK-NI	80	33	M 60 x 2	87	126	39	M 30	323	118.6	DIN 1810-A80-90	2155
GN 350-80-39-AK-NI	80	39	M 60 x 2	87	126	39	M 36	323	38.2	DIN 1810-A80-90	1852

