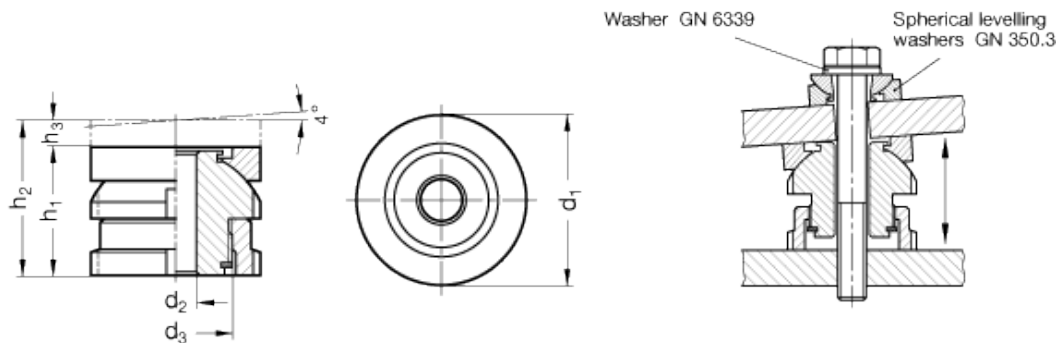


GN 350.2-NI

Levelling sets



technical informations

Material

AISI 303 stainless steel NI.

F_1 : max. total load.

F_2 : max. load after deduction of the max. preload for screws 6.8, $\mu = 0,14$.

Accessories on request

C-Spanner DIN 1810 (code no. see table).

Features and applications

Levelling sets GN 350.2 are used for levelling, adjusting and linking operations. The spherical washer allows precise installation of two non parallel planes at a required gradient up to $\approx 4^\circ$.

They comprise a threaded upper sleeve and a female threaded lower sleeve. The fine thread allows a stepless and precise setting and locking using the C-Spanner DIN 1810. A locking ring serves as a height limiter for the max. height.

Standard Elements	Main dimensions							for thread	Static Load		C-Spanner	Weigh g
	Description	d ₁	d ₂	h ₁	d ₃	h ₂	h ₃		Max. load F_1 in kN	Preload F_2 in kN		
GN 350.2-25-5.5-22-NI	25	5.5	22	M15x1	26	4	M5	27.1	22.24	DIN 1810-A25-28	70	
GN 350.2-25-5.5-35-NI	25	5.5	22	M15x1	26	4	M5	27.1	22.24	DIN 1810-A25-28	90	

GN 350.2-25-6.6-22-NI	25	6.6	22	M15x1	26	4	M6	27.1	20.26	DIN 1810-A25-28	66
GN 350.2-25-6.6-35-NI	25	6.6	35	M15x1	50	15	M6	27.1	20.26	DIN 1810-A30-32	100
GN 350.2-32-6.6-26-NI	32	6.6	26	M20x1	31	5	M6	43.4	36.56	DIN 1810-A30-32	132
GN 350.2-32-6.6-43-NI	32	6.6	43	M20x1	63	20	M6	43.4	36.56	DIN 1810-A30-32	216
GN 350.2-32-9-26-NI	32	9	26	M20x1	31	5	M8	43.4	36.56	DIN 1810-A30-32	131
GN 350.2-32-9-43-NI	32	9	43	M20x1	63	20	M8	43.4	36.56	DIN 1810-A30-32	200
GN 350.2-32-11-26-NI	32	11	26	M20x1	31	5	M10	43.4	23.41	DIN 1810-A30-32	120
GN 350.2-32-11-43-NI	32	11	43	M20x1	63	20	M10	43.4	23.41	DIN 1810-A30-32	179
GN 350.2-45-11-34-NI	45	11	34	M30x1.5	41	7	M10	84	64.01	DIN 1810-A45-50	355
GN 350.2-45-11-54-NI	45	11	54	M30x1.5	79	25	M10	84	64.01	DIN 1810-A45-50	553
GN 350.2-45-13.5-34-NI	45	13.5	34	M30x1.5	41	7	M12	84	54.82	DIN 1810-A45-50	305
GN 350.2-45-13.5-54-NI	45	13.5	54	M30x1.5	79	25	M12	84	54.82	DIN 1810-A45-50	375
GN 350.2-45-17.5-34-NI	45	17.5	34	M30x1.5	41	7	M16	84	28.90	DIN 1810-A45-50	280
GN 350.2-45-17.5-54-NI	45	17.5	34	M30x1.5	79	7	M16	84	28.90	DIN 1810-A45-50	513
GN 350.2-58-17.5-44-NI	58	17.5	44	M40x1.5	53	9	M16	148	92.90	DIN 1810-A58-62	665
GN 350.2-58-17.5-70-NI	58	17.5	70	M40x1.5	102	32	M16	148	92.90	DIN 1810-A58-62	1104
GN 350.2-58-22-44-NI	58	22	44	M40x1.5	53	9	M20	148	59.08	DIN 1810-A58-62	610
GN 350.2-58-22-70-NI	58	22	70	M40x1.5	102	32	M20	148	59.08	DIN 1810-A58-62	1110
GN 350.2-58-26-44-NI	58	26	44	M40x1.5	102	9	M24	148	20.30	DIN 1810-A58-62	560
GN 350.2-58-26-70-NI	58	26	70	M40x1.5	102	32	M24	148	20.30	DIN 1810-A58-62	1060
GN 350.2-70-22-50-NI	70	22	50	M50x1.5	60	10	M20	225	136.08	DIN 1810-A68-75	1300
GN 350.2-70-22-83-NI	70	22	83	M50x1.5	123	40	M20	225	136.08	DIN 1810-A68-75	1910
GN 350.2-70-26-50-NI	70	26	50	M50x1.5	60	10	M24	225	97.30	DIN 1810-A68-75	940
GN 350.2-70-26-83-NI	70	26	83	M50x1.5	123	40	M24	225	97.30	DIN 1810-A68-75	1820
GN 350.2-70-33-50-NI	70	33	50	M50x1.5	60	10	M30	225	20.60	DIN 1810-A68-75	815
GN 350.2-70-33-83-NI	70	33	83	M50x1.5	123	40	M30	225	20.60	DIN 1810-A68-75	1610
GN 350.2-80-26-56-NI	80	26	56	M60x2	68	12	M24	323	195.30	DIN 1810-A80-90	1140
GN 350.2-80-26-94-NI	80	26	94	M60x2	144	50	M24	323	195.30	DIN 1810-A80-90	2880
GN 350.2-80-33-56-NI	80	33	56	M60x2	68	12	M30	323	118.60	DIN 1810-A80-90	1000
GN 350.2-80-33-94-NI	80	33	94	M60x2	144	50	M30	323	118.60	DIN 1810-A80-90	2700
GN 350.2-80-39-56-NI	80	39	56	M60x2	68	12	M36	323	38.20	DIN 1810-A80-90	860
GN 350.2-80-39-94-NI	80	39	94	M60x2	144	50	M36	323	38.20	DIN 1810-A80-90	2560



STANDARD MACHINE ELEMENTS WORLDWIDE