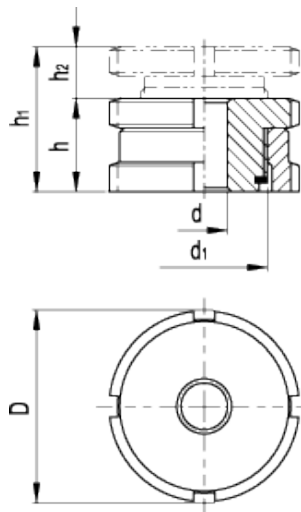


GN 350.1-NI

Levelling sets



INOX
Stainless Steel



technical informations

Material

AISI 303 stainless steel.

F_1 : max. total load.

F_2 : max. load after deduction of the max. preload for screws 6.8, $\mu = 0,14$.

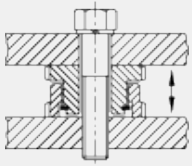
Standard executions available

Version A: without locknut.

Applications

Levelling sets GN 350.1-NI are used for levelling, adjusting and linking operations if small dimensions are given. They comprise a threaded upper sleeve and a female threaded lower sleeve. The fine thread allows a stepless and precise setting and locking using the C-Spanner DIN 1810. An anti-rotation disc serves as a height limiter for the max. height.

Application example



Standard Elements	Main dimensions						for screw	Static load		Weight g	C-Spanner DIN 1810
	Description	D	d	d ₁	h	h ₁		h ₂	Max. load F ₁ [kN]		
GN 350.1-25-6.6-A-NI	25	6.6	M15x1	15	19	4	M6	27.1	20.2	43	A25-28
GN 350.1-32-6.6-A-NI	32	6.6	M20x1	18	23	5	M6	43.4	36.5	93	A30-32
GN 350.1-32-9-A-NI	32	9	M20x1	18	23	5	M8	43.4	30.8	87	A30-32
GN 350.1-32-11-A-NI	32	11	M20x1	18	23	5	M10	43.4	23.4	83	A30-32
GN 350.1-45-11-A-NI	45	11	M30x1	22	29	7	M10	84	64	216	A45-50
GN 350.1-45-13.5-A-NI	45	13.5	M30x1	22	29	7	M12	84	54.8	207	A45-50
GN 350.1-45-17.5-A-NI	45	17.5	M30x1	22	29	7	M16	84	28.9	188	A45-50
GN 350.1-58-17.5-A-NI	58	17.5	M40x1	28	37	9	M16	148	92.9	450	A58-62
GN 350.1-58-22-A-NI	58	22	M40x1	28	37	9	M20	148	59	418	A58-62
GN 350.1-58-26-A-NI	58	26	M40x1	28	37	9	M24	148	20.3	386	A58-62
GN 350.1-70-22-A-NI	70	22	M50x1.5	33	43	10	M20	225	136	788	A68-75
GN 350.1-70-26-A-NI	70	26	M50x1.5	33	43	10	M24	225	97.3	744	A68-75
GN 350.1-70-33-A-NI	70	33	M50x1.5	33	43	10	M30	225	20.6	668	A68-75
GN 350.1-80-26-A-NI	80	26	M60x2	38	50	12	M24	323	195.3	1135	A80-90
GN 350.1-80-33-A-NI	80	33	M60x2	38	50	12	M30	323	118.6	1060	A80-90
GN 350.1-80-39-A-NI	80	39	M60x2	38	50	12	M36	323	38.2	965	A80-90



STANDARD MACHINE ELEMENTS WORLDWIDE