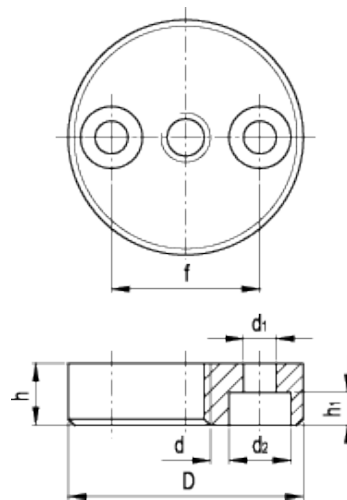


GN 349

Reinforcing round end-caps



technical informations

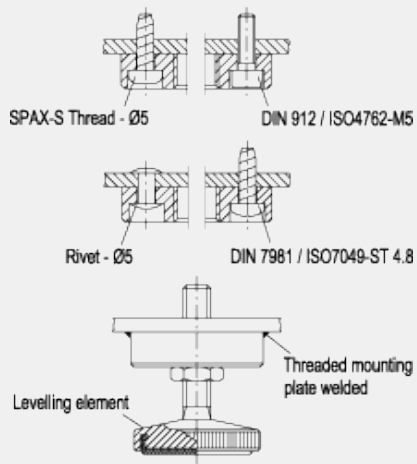
Material

Black-oxide weldable steel.

Features and applications

Threaded mounting plates GN 349 are used on levelling feet particularly in such cases where a machine shrouding is made of very thin sheet metal.

Installation examples



Standard Elements	Main dimensions							Weight
	D	d	d ₁	d ₂	h	h ₁	f	g
GN 349-36-M8	36	M8	5.3	10	10	5.3	24	67
GN 349-36-M10	36	M10	5.3	10	10	5.3	24	65
GN 349-36-M12	36	M12	5.3	10	10	5.3	24	63



STANDARD MACHINE ELEMENTS WORLDWIDE