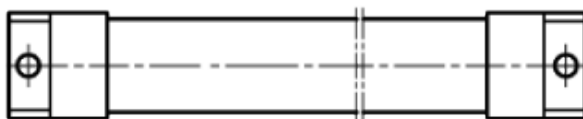
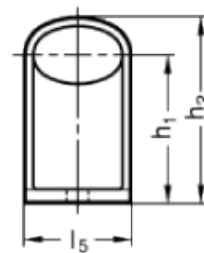
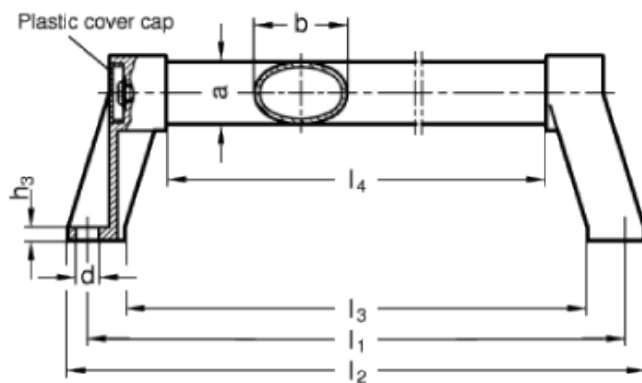


GN 334.1

Oval tubular handles
with inclined shanks



technical informations

Tube

Aluminium.

Handle shanks

Die-cast zinc alloy, epoxy resin coating.

Finish

Version SW:

- Tube: RAL 9005 black colour, matte finish, epoxy resin coating.

- Handle shanks: RAL 9005 black colour, matte finish, epoxy resin coating.

Version EL:

- Tube: anodised, natural colour.
 - Handle shanks: RAL 9005 black colour, matte finish, epoxy resin coating.
- Version ES:
- Tube: anodised, natural colour.
 - Handle shanks: silver RAL 9006, matte finish, epoxy resin coating.

Tube end caps

Polyamide based (PA) technopolymer, light grey colour.
Resistant to solvents, oils, greases and other chemical agents.

Special executions on request (For sufficient quantities)

Different lengths.

Features and applications

Oval tubular handles GN 334.1 are highly stable.
The handle tube can be mounted without any further machining, allowing special lengths to be realised easily.

Standard Elements	Main dimensions									Mounting holes		Weight
Description	b	$l_1 \pm 0.5$	a	h_1	h_2	l_2	l_3	l_4	l_5	d	h_3	g
GN 334.1-36-200-SW	36	200	24	57	72	215	171	139	41	8.5	5	440
GN 334.1-36-200-EL	36	200	24	57	72	215	171	139	41	8.5	5	440
GN 334.1-36-200-ES	36	200	24	57	72	215	171	139	41	8.5	5	440
GN 334.1-36-250-SW	36	250	24	57	72	265	221	189	41	8.5	5	470
GN 334.1-36-250-EL	36	250	24	57	72	265	221	189	41	8.5	5	470
GN 334.1-36-250-ES	36	250	24	57	72	265	221	189	41	8.5	5	470
GN 334.1-36-300-SW	36	300	24	57	72	315	271	239	41	8.5	5	500
GN 334.1-36-300-EL	36	300	24	57	72	315	271	239	241	8.5	5	500
GN 334.1-36-300-ES	36	300	24	57	72	315	271	239	41	8.5	5	500
GN 334.1-36-350-SW	36	350	24	57	72	365	321	289	41	8.5	5	655
GN 334.1-36-350-EL	36	350	24	57	72	365	321	289	41	8.5	5	655
GN 334.1-36-350-ES	36	350	24	57	72	365	321	289	41	8.5	5	655
GN 334.1-36-400-SW	36	400	24	57	72	415	371	339	41	8.5	5	721
GN 334.1-36-400-EL	36	400	24	57	72	415	371	339	41	8.5	5	721
GN 334.1-36-400-ES	36	400	24	57	72	415	371	339	41	8.5	5	721
GN 334.1-36-500-SW	36	500	24	57	72	515	471	439	41	8.5	5	799
GN 334.1-36-500-EL	36	500	24	57	72	515	471	439	41	8.5	5	799
GN 334.1-36-500-ES	36	500	24	57	72	515	471	439	41	8.5	5	799
GN 334.1-36-600-SW	36	600	24	57	72	615	571	539	41	8.5	5	878
GN 334.1-36-600-EL	36	600	24	57	72	615	571	539	41	8.5	5	878
GN 334.1-36-600-ES	36	600	24	57	72	615	571	539	41	8.5	5	878
GN 334.1-36-800-SW	36	800	24	57	72	815	771	739	41	8.5	5	1043
GN 334.1-36-800-EL	36	800	24	57	72	815	771	739	41	8.5	5	1043
GN 334.1-36-800-ES	36	800	24	57	72	815	771	739	41	8.5	5	1043

ELESA and GANTER models all rights reserved in accordance with the law. Always mention the source when reproducing our drawings.

STANDARD MACHINE ELEMENTS WORLDWIDE