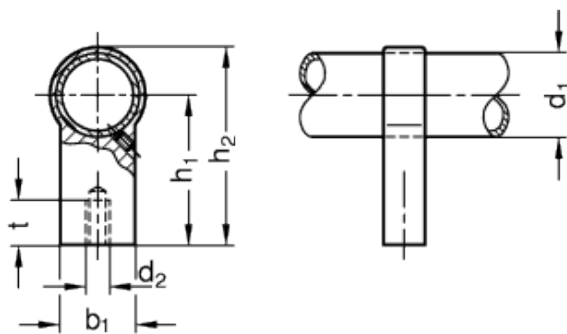


# GN 333.9

Handle shanks  
for tubular handles



## technical informations

### Handle shanks

Zinc alloy, die-cast.

- Version SW: RAL 9005, black colour, matte finish, epoxy resin coating.
- Version SR: RAL 9006, silver, matte textured finish, epoxy resin coating.

### Assembly

Version A: back mounting by means of a M8 screw, tapped blind holes.

### Features and applications

For tubular handles GN 333.1 with handle tube  $\varnothing 28$ , type A, a handle shank GN 333.9 is available for greater handle lengths or loads.

Standard Elements	Main dimensions									Weight
Description	d <sub>1</sub>	d <sub>2</sub>	b <sub>1</sub>	b <sub>2</sub>	b <sub>3</sub>	b <sub>4</sub>	h <sub>1</sub>	h <sub>2</sub>	t <sub>min.</sub>	g
GN 333.9-28-A-SW	28	M8	25	14	50	66	50	66	14	90
GN 333.9-28-A-SR	28	M8	25	14	50	66	50	66	14	88



ELESA and GANTER models all rights reserved in accordance with the law. Always mention the source when reproducing our drawings.

**STANDARD MACHINE ELEMENTS WORLDWIDE**