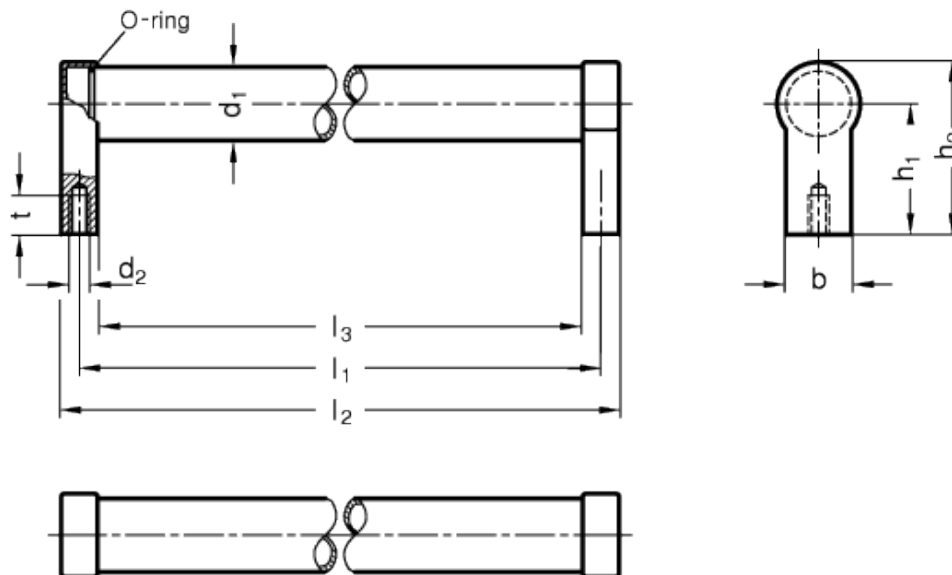


GN 333.5

Tubular handles



INOX
Stainless Steel



technical informations

Tube

AISI 304 stainless steel, thickness 2 mm, fine grounded matte finish.

Handle shanks

Stainless steel (precision casting), matt sand-blasted and electropolished finish. Fitted to the tube by means of an O-ring.

Assembly

Tapped blind holes.

Special executions on request (For sufficient quantities)

Different lengths.

Features and applications

An O-ring at the connecting point between the tubular handle and the shanks, prevents any spray water from entering the tube. These handles are typically used on turning or rolling doors for machines and equipment. Stainless steel, thanks to its high resistance to corrosion, allows the application of these handles on machines and equipment in those sectors where laws or particular hygienic, climatic and environmental factors make it mandatory to use corrosion resistant materials.

Standard Elements	Main dimensions							Mounting holes		Weight
Description	d ₁	l _{1 ±1}	b	d ₂	h ₁	h ₂	l ₂	l ₃	t _{min.}	g
GN 333.5-28-200	28	200	25	M8	50	66	214	186	15	500
GN 333.5-28-250	28	250	25	M8	50	66	264	236	15	563
GN 333.5-28-300	28	300	25	M8	50	66	314	286	15	626
GN 333.5-28-400	28	400	25	M8	50	66	414	386	15	760
GN 333.5-28-500	28	500	25	M8	50	66	514	486	15	790
GN 333.5-28-600	28	600	25	M8	50	66	614	586	15	980



ELESA and GANTER models all rights reserved in accordance with the law. Always mention the source when reproducing our drawings.

STANDARD MACHINE ELEMENTS WORLDWIDE