

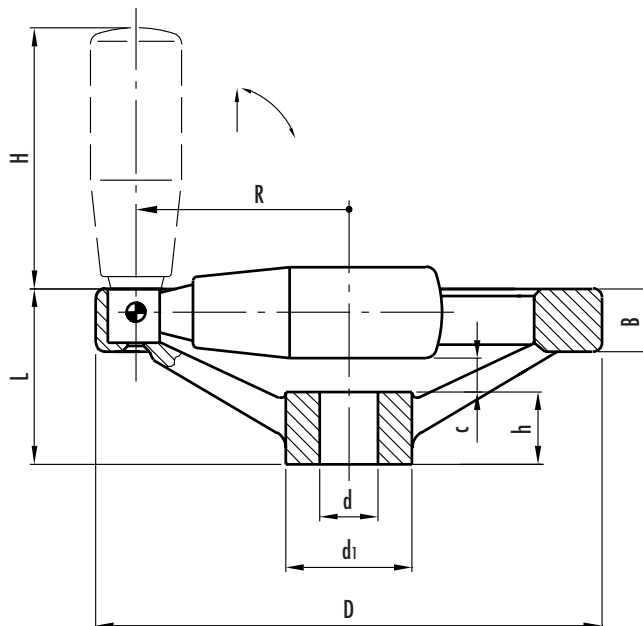
GN 322.3

Two-spoke handwheels with fold-away handle

- **Cast aluminium.**
- **Turned and mirror-polished rim.** The other surfaces are matte finish fine sandblasted.
- **Hub** with:
 - B** = standard H7 tolerance plain bore
 - K** = standard H7 tolerance reamed bore with DIN 6885/1 P9 keyway (see table on page 669).
- **Axial retaining washer** (on request) type GN 184 (page 452).
- Axial and radial runout lower than IT 12.
- GN 598.3 phenolic-based (PF) black Duroplast **fold-away handle** (type KU - see page 280).
Resistant to solvents, oils, greases and other chemical agents.



For fixing GN 322.3 on shafts by a grub screw see GN 110 drilling technical information on page 668.



Standard elements Description	Main dimensions					Bore			Handle			Weight grams
	D	L	B	d ₁	c	d H7	h	keyway	H	Ø	R	
GN 322.3-125-B12-D GN 322.3-125-K12-D	125	44	24.5	31	4.5	12 12	18	•	67	23	50	469 467
GN 322.3-140-B14-D GN 322.3-140-K14-D	140	45.5	24.5	36	5	14 14	19	•	67	23	57.5	553 551
GN 322.3-160-B14-D GN 322.3-160-B16-D GN 322.3-160-K14-D GN 322.3-160-K16-D	160	47	25	36	4	14 16 14 16	20	• •	83	26	67.5	697 693 695 691
GN 322.3-200-B18-D GN 322.3-200-B20-D GN 322.3-200-K18-D GN 322.3-200-K20-D	200	52.5	25	42	5.5	18 20 18 20	24	• •	83	26	84	978 973 975 970
GN 322.3-250-B22-D GN 322.3-250-K22-D	250	61	26.5	48	10	22 22	28	•	83	26	111	1388 1384