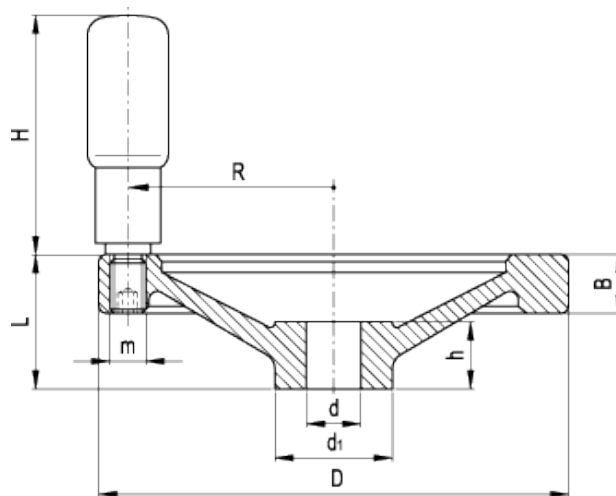


GN 321-R

Solid handwheels with revolving handle



technical informations

Material

Aluminium, fine sandblasted matte surface, turned and mirror-polished rim.

Assembly

- Version B: H7 reamed hole.
 - Version K: H7 reamed hole and keyway in compliance with [DIN 6885/1 P9 tolerance](#).
- For fixing GN 321-R on shafts by a grub screw see [Technical Data](#).

Revolving handle

Type GN 798 polyamide based (PA) technopolymer, black colour, matte finish. Resistant to solvents, oils, greases and other chemical agents. The two-volume special design of the handle provides the operator's hand with a safe and ergonomic grip when turning the handwheel.

Other standard executions available

[GN 321.4-D](#) or [GN 321.5-D](#) with [GN 000.4](#) or [GN 000.5](#) safety coupling bushing.

Accessories on request

Axial retaining washer type [GN 184](#).

Technical data

Axial and radial runout lower than 0.4.

Standard Elements	Main dimensions				Bore			Handle				Weight
Description	D	L	B	d ₁	d _{H7}	h	H	Ø	m	R	g	
GN 321-80-B10-R	80	26	13	26	10	16	44	16	M6	33.5	161	
GN 321-80-B12-R	80	26	13	26	12	16	44	16	M6	33.5	154	
GN 321-80-K10-R	80	26	13	26	10	16	44	16	M6	33.5	159	
GN 321-80-K12-R	80	26	13	26	12	16	44	16	M6	33.5	152	
GN 321-100-B10-R	100	30	14	28	10	17	58.5	18	M6	42.5	255	
GN 321-100-B12-R	100	30	14	28	12	17	58.5	18	M6	42.5	253	
GN 321-100-K10-R	100	30	14	28	10	17	58.5	18	M6	42.5	253	
GN 321-100-K12-R	100	30	14	28	12	17	58.5	18	M6	42.5	251	
GN 321-125-B12-R	125	33	15	31	12	18	61.5	22	M8	54	394	
GN 321-125-B14-R	125	33	15	31	14	18	61.5	22	M8	54	374	
GN 321-125-K12-R	125	33	15	31	12	18	61.5	22	M8	54	392	
GN 321-125-K14-R	125	33	15	31	14	18	61.5	22	M8	54	372	
GN 321-140-B14-R	140	36	16.5	36	14	19	76.5	24	M8	61	507	
GN 321-140-B16-R	140	36	16.5	36	16	19	76.5	24	M8	61	503	
GN 321-140-K14-R	140	36	16.5	36	14	19	76.5	24	M8	61	501	
GN 321-140-K16-R	140	36	16.5	36	16	19	76.5	24	M8	61	505	
GN 321-160-B14-R	160	39	18	36	14	20	76.5	24	M10	71	675	
GN 321-160-B16-R	160	39	18	36	16	20	76.5	24	M10	71	665	
GN 321-160-K14-R	160	39	18	36	14	20	76.5	24	M10	71	671	
GN 321-160-K16-R	160	39	18	36	16	20	76.5	24	M10	71	661	
GN 321-200-B18-R	200	45	20.5	45	18	24	86.5	25	M10	89	990	
GN 321-200-B20-R	200	45	20.5	45	20	24	86.5	25	M10	89	988	
GN 321-200-K18-R	200	45	20.5	45	18	24	86.5	25	M10	89	984	
GN 321-200-K20-R	200	45	20.5	45	20	24	86.5	25	M10	89	963	
GN 321-250-B22-R	250	51	23	48	22	28	86.5	25	M10	113	1626	
GN 321-250-B26-R	250	51	23	48	26	28	86.5	25	M10	113	1583	
GN 321-250-K22-R	250	51	23	48	22	28	86.5	25	M10	113	1621	
GN 321-250-K26-R	250	51	23	48	26	28	86.5	25	M10	113	1577	

This product had the following design awards:





ELESA and GANTER models all rights reserved in accordance with the law. Always mention the source when reproducing our drawings.

STANDARD MACHINE ELEMENTS WORLDWIDE