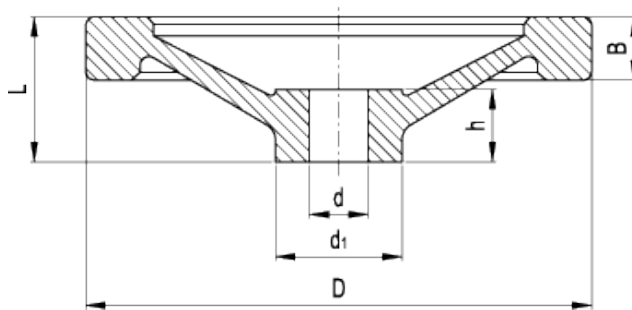


GN 321-A

Solid handwheels



technical informations

Material

Aluminium, fine sandblasted matte surface, turned and mirror-polished rim.

Assembly

- Version B: H7 reamed hole.
 - Version K: H7 reamed hole and keyway in compliance with [DIN 6885/1 P9 tolerance](#).
- For fixing GN 321-A on shafts by a grub screw see [Technical Data](#).

Other standard executions available

[GN 321.4-A](#) or [GN 321.5-A](#) with [GN 000.4](#) or [GN 000.5](#) safety coupling bushing.

Accessories on request

Axial retaining washer type [GN 184](#).

Technical Data

Axial and radial runout lower than 0.4.

Standard Elements	Main dimensions				Bore		Weight
	Description	D	L	B	d ₁	d _{H7}	
GN 321-80-B10-A	80	26	13	26	10	16	134
GN 321-80-B12-A	80	26	13	26	12	16	127
GN 321-80-K10-A	80	26	13	26	10	16	132
GN 321-80-K12-A	80	26	13	26	12	16	125
GN 321-100-B10-A	100	30	14	28	10	17	215
GN 321-100-B12-A	100	30	14	28	12	17	213
GN 321-100-K10-A	100	30	14	28	10	17	213
GN 321-100-K12-A	100	30	14	28	12	17	211
GN 321-125-B12-A	125	33	15	31	12	18	318
GN 321-125-B14-A	125	33	15	31	14	18	298
GN 321-125-K12-A	125	33	15	31	12	18	316
GN 321-125-K14-A	125	33	15	31	14	18	290
GN 321-140-B14-A	140	36	16.5	36	14	19	431
GN 321-140-B16-A	140	36	16.5	36	16	19	427
GN 321-140-K14-A	140	36	16.5	36	14	19	425
GN 321-140-K16-A	140	36	16.5	36	16	19	429
GN 321-160-B14-A	160	39	18	36	14	20	570
GN 321-160-B16-A	160	39	18	36	16	20	560
GN 321-160-K14-A	160	39	18	36	14	20	566
GN 321-160-K16-A	160	39	18	36	16	20	556
GN 321-200-B18-A	200	45	20.5	45	18	24	885
GN 321-200-B20-A	200	45	20.5	45	20	24	884
GN 321-200-K18-A	200	45	20.5	45	18	24	880
GN 321-200-K20-A	200	45	20.5	45	20	24	860
GN 321-250-B22-A	250	51	23	48	22	28	1522
GN 321-250-B26-A	250	51	23	48	26	28	1479
GN 321-250-K22-A	250	51	23	48	22	28	1517
GN 321-250-K26-A	250	51	23	48	26	28	1474

This product had the following design awards:



ELESA and GANTER models all rights reserved in accordance with the law. Always mention the source when reproducing our drawings.

STANDARD MACHINE ELEMENTS WORLDWIDE