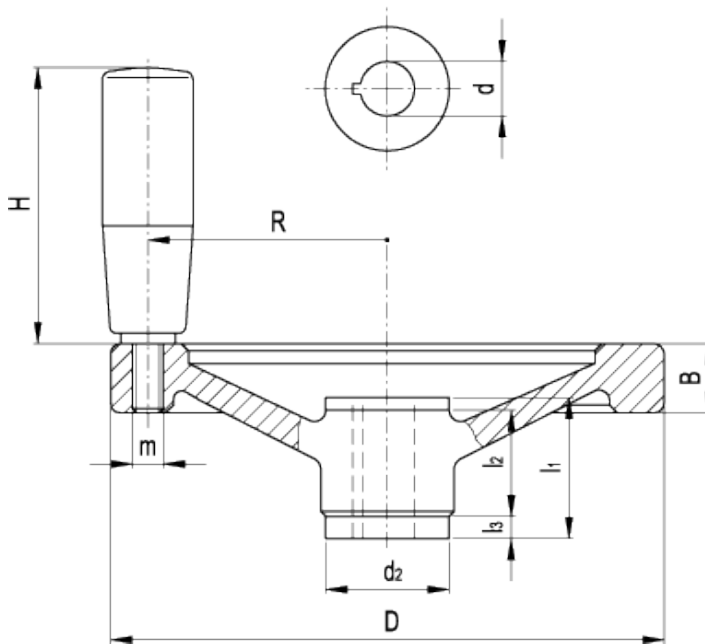


GN 321.5-D

Solid safety handwheels with revolving handle



technical informations

Material

Aluminium, fine sandblasted matte surface, turned and mirror-polished rim.

Revolving handle

Type [GN 598](#) steel with black epoxy resin coating.

Assembly

Hub with keyway in compliance with [DIN 6885/2 P9 tolerance](#).

[GN 000.5](#) safety coupling bushing with needle bearings.

- Version DR: with engagement system by pushing.

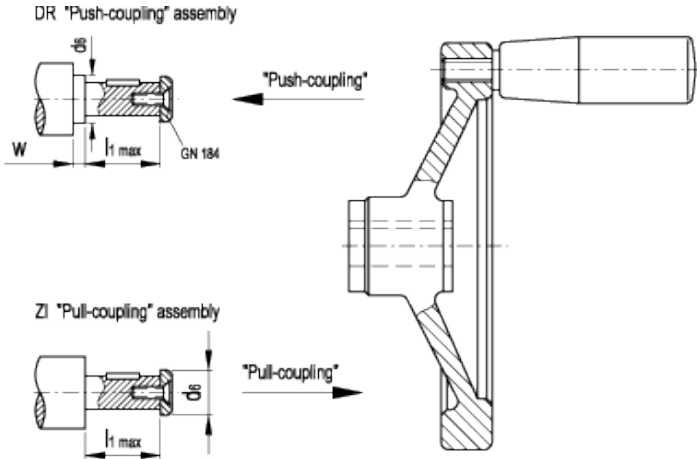
- Version ZI: with engagement system by pulling.

Accessories on request

Axial retaining washer [GN 184](#).

Technical data

Axial and radial runout lower than 0.4.



Standard Elements	Main dimensions								Safety coupling bushing GN 000.5	Mounting hole	Handle				Weight
	Description	D	B	d ₂	d _{6 max.}	l ₁	l ₂	l ₃		w _{min.}	d _{H7}	H	Ø	m	
GN 321.5-125-K12-D-DR	125	15	29	17	42	18	12	4	GN 000.5-1	12	67.5	23	M8	54	562
GN 321.5-125-K12-D-ZI	125	15	29	17	42	18	12	4	GN 000.5-1	12	67.5	23	M8	54	562
GN 321.5-140-K12-D-DR	140	16.5	29	17	42	18	12	4	GN 000.5-1	12	67.5	23	M8	61	651
GN 321.5-140-K12-D-ZI	140	16.5	29	17	42	18	12	4	GN 000.5-1	12	67.5	23	M8	61	651
GN 321.5-140-K14-D-DR	140	16.5	33	21	48	20	14	4	GN 000.5-2	14	67.5	23	M8	61	706
GN 321.5-140-K14-D-ZI	140	16.5	33	21	48	20	14	4	GN 000.5-2	14	67.5	23	M8	61	706
GN 321.5-160-K14-D-DR	160	18	33	21	48	20	14	4	GN 000.5-2	14	82.5	26	M10	71	937
GN 321.5-160-K14-D-ZI	160	18	33	21	48	20	14	4	GN 000.5-2	14	82.5	26	M10	71	937
GN 321.5-200-K18-D-DR	200	20.5	39	26	50	24	13	4	GN 000.5-3	18	82.5	26	M10	89	1335
GN 321.5-200-K18-D-ZI	200	20.5	39	26	50	24	13	4	GN 000.5-3	18	82.5	26	M10	89	1335
GN 321.5-250-K22-D-DR	250	23	46	30	54	28	13	4	GN 000.5-4	22	92.5	28	M10	113	1916
GN 321.5-250-K22-D-ZI	250	23	46	30	54	28	13	4	GN 000.5-4	22	92.5	28	M10	113	1916



ELESA and GANTER models all rights reserved in accordance with the law. Always mention the source when reproducing our drawings.

STANDARD MACHINE ELEMENTS WORLDWIDE