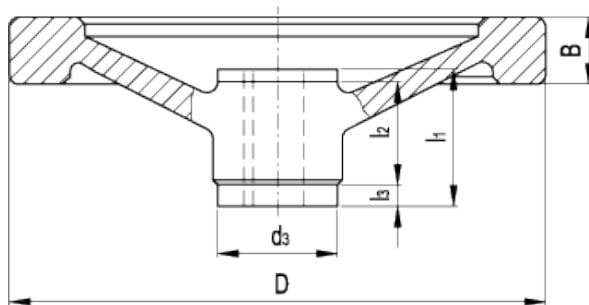
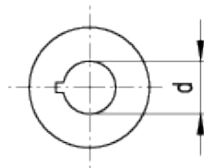


GN 321.5-A

Solid safety handwheels



technical informations

Material

Aluminium, fine sandblasted matte surface, turned and mirror-polished rim.

Assembly

Hub with keyway in compliance with [DIN 6885/2 P9 tolerance](#).

[GN 000.5](#) safety coupling bushing with needle bearings.

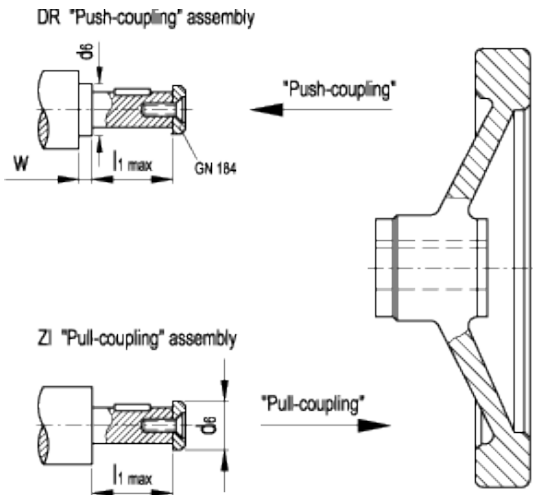
- Version DR: with engagement system by pushing.
- Version ZI: with engagement system by pulling.

Accessories on request

Axial retaining washer [GN 184](#).

Technical data

Axial and radial runout lower than 0.4.



Standard Elements Description	Main dimensions								Safety coupling bushing GN 000.5	Mounting hole d _{H7}	Weight g
	D	B	d ₃	d _{6 max.}	l ₁	l ₂	l ₃	w _{min.}			
GN 321.5-125-K12-A-DR	125	15	29	17	42	18	12	4	GN 000.5-1	12	423
GN 321.5-125-K12-A-ZI	125	15	29	17	42	18	12	4	GN 000.5-1	12	423
GN 321.5-140-K12-A-DR	140	16.5	29	17	42	18	12	4	GN 000.5-1	12	512
GN 321.5-140-K12-A-ZI	140	16.5	29	17	42	18	12	4	GN 000.5-1	12	512
GN 321.5-140-K14-A-DR	140	16.5	33	21	48	20	14	4	GN 000.5-2	14	592
GN 321.5-140-K14-A-ZI	140	16.5	33	21	48	20	14	4	GN 000.5-2	14	592
GN 321.5-160-K14-A-DR	160	18	33	21	48	20	14	4	GN 000.5-2	14	715
GN 321.5-160-K14-A-ZI	160	18	33	21	48	20	14	4	GN 000.5-2	14	715
GN 321.5-200-K18-A-DR	200	20.5	39	26	50	24	13	4	GN 000.5-3	18	1127
GN 321.5-200-K18-A-ZI	200	20.5	39	26	50	24	13	4	GN 000.5-3	18	1127
GN 321.5-250-K22-A-DR	250	23	46	30	54	28	13	4	GN 000.5-4	22	1840
GN 321.5-250-K22-A-ZI	250	23	46	30	54	28	13	4	GN 000.5-4	22	1840



STANDARD MACHINE ELEMENTS WORLDWIDE