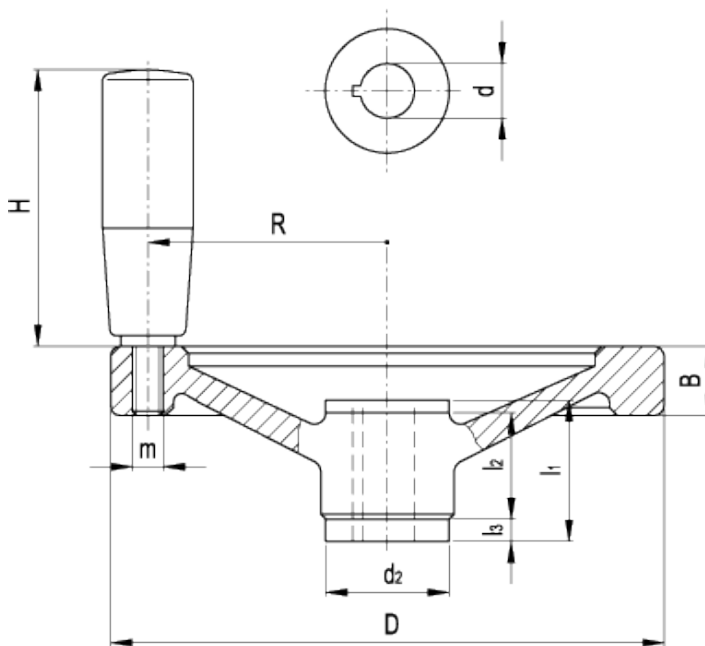


# GN 321.4-D

Solid safety handwheels with revolving handle



## technical informations

### Material

Aluminium, fine sandblasted matte surface, turned and mirror-polished rim.

### Revolving handle

Type [GN 598](#) steel with black epoxy resin coating.

### Assembly

Hub with keyway in compliance with [DIN 6885/2 P9 tolerance](#).

[GN 000.4](#) safety coupling bushing with friction bearings.

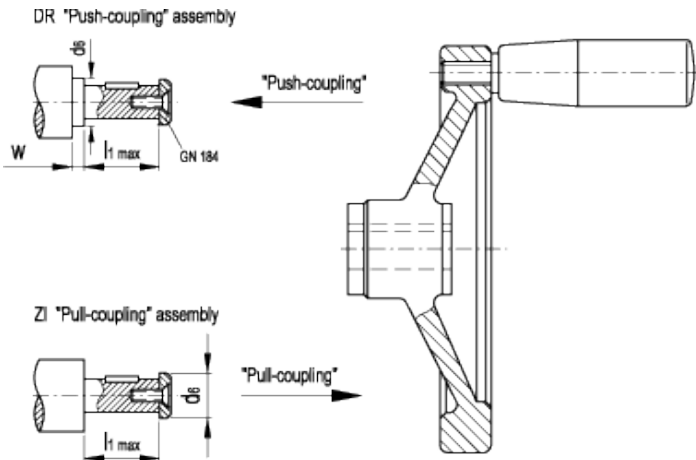
- Version DR: with engagement system by pushing.
- Version ZI: with engagement system by pulling.

Accessories on request

Axial retaining washer [GN 184](#).

Technical data

Axial and radial runout lower than 0.4.



Standard Elements Description	Main dimensions								Safety coupling bushing GN 000.4	Mounting hole		Handle			Weight g
	D	B	d <sub>2</sub>	d <sub>6 max.</sub>	l <sub>1</sub>	l <sub>2</sub>	l <sub>3</sub>	w <sub>min.</sub>		d <sub>H7</sub>	H	Ø	m	R	
GN 321.4-125-K12-D-DR	125	15	28	17	28.5	18	5	4	GN 000.4-1	12	67.5	23	M8	54	562
GN 321.4-125-K12-D-ZI	125	15	28	17	28.5	18	5	4	GN 000.4-1	12	67.5	23	M8	54	562
GN 321.4-140-K12-D-DR	140	16.5	28	17	28.5	18	5	4	GN 000.4-1	12	67.5	23	M8	61	651
GN 321.4-140-K12-D-ZI	140	16.5	28	17	28.5	18	5	4	GN 000.4-1	12	67.5	23	M8	61	651
GN 321.4-140-K14-D-DR	140	16.5	32	21	32.5	20	6	4	GN 000.4-2	14	67.5	23	M8	61	706
GN 321.4-140-K14-D-ZI	140	16.5	32	21	32.5	20	6	4	GN 000.4-2	14	67.5	23	M8	61	706
GN 321.4-140-K16-D-DR	140	16.5	32	21	32.5	20	6	4	GN 000.4-2	16	67.5	23	M8	61	693
GN 321.4-140-K16-D-ZI	140	16.5	32	21	32.5	20	6	4	GN 000.4-2	16	67.5	23	M8	61	693
GN 321.4-160-K14-D-DR	160	18	32	21	32.5	20	6	4	GN 000.4-2	14	82.5	26	M10	71	937
GN 321.4-160-K14-D-ZI	160	18	32	21	32.5	20	6	4	GN 000.4-2	14	82.5	26	M10	71	937
GN 321.4-160-K16-D-DR	160	18	32	21	32.5	20	6	4	GN 000.4-2	16	82.5	26	M10	71	924
GN 321.4-160-K16-D-ZI	160	18	32	21	32.5	20	6	4	GN 000.4-2	16	82.5	26	M10	71	924
GN 321.4-200-K18-D-DR	200	20.5	38	26	36.5	24	6	4	GN 000.4-3	18	82.5	26	M10	89	1335
GN 321.4-200-K18-D-ZI	200	20.5	38	26	36.5	24	6	4	GN 000.4-3	18	82.5	26	M10	89	1335
GN 321.4-200-K20-D-DR	200	20.5	38	26	36.5	24	6	4	GN 000.4-3	20	82.5	26	M10	89	1318
GN 321.4-200-K20-D-ZI	200	20.5	38	26	36.5	24	6	4	GN 000.4-3	20	82.5	26	M10	89	1318
GN 321.4-250-K22-D-DR	250	23	45	30	47.5	28	12	4	GN 000.4-4	22	92.5	28	M10	113	1916
GN 321.4-250-K22-D-ZI	250	23	45	30	47.5	28	12	4	GN 000.4-4	22	92.5	28	M10	113	1916

