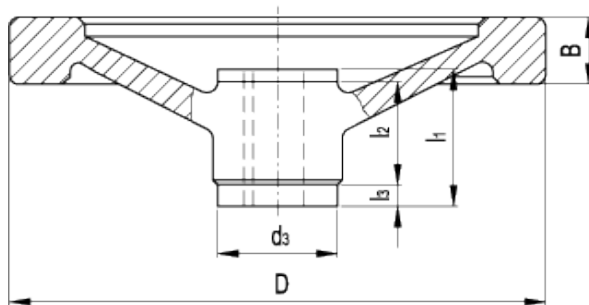
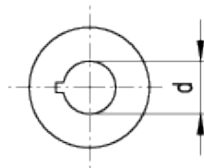


GN 321.4-A

Solid safety handwheels



technical informations

Material

Aluminium, fine sandblasted matte surface, turned and mirror-polished rim.

Assembly

Hub with keyway in compliance with [DIN 6885/2 P9 tolerance](#).

[GN 000.4](#) safety coupling bushing with friction bearings.

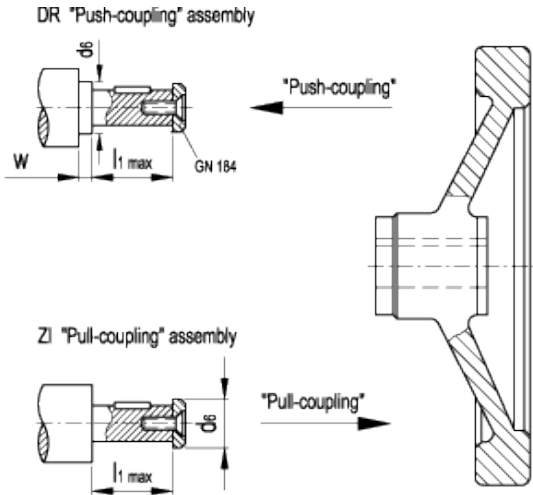
- Version DR: with engagement system by pushing.
- Version ZI: with engagement system by pulling.

Accessories on request

Axial retaining washer [GN 184](#).

Technical data

Axial and radial runout lower than 0.4.



Standard Elements	Main dimensions								Safety coupling bushing GN 000.4	Mounting hole	Weight
	Description	D	B	d ₃	d _{6 max.}	l ₁	l ₂	l ₃		w _{min.}	d _{H7}
GN 321.4-125-K12-A-DR	125	15	28	17	28.5	18	5	4	GN 000.4-1	12	377
GN 321.4-125-K12-A-ZI	125	15	28	17	28.5	18	5	4	GN 000.4-1	12	377
GN 321.4-140-K12-A-DR	140	16.5	28	17	28.5	18	5	4	GN 000.4-1	12	466
GN 321.4-140-K12-A-ZI	140	16.5	28	17	28.5	18	5	4	GN 000.4-1	12	466
GN 321.4-140-K14-A-DR	140	16.5	32	21	32.5	20	6	4	GN 000.4-2	14	521
GN 321.4-140-K14-A-ZI	140	16.5	32	21	32.5	20	6	4	GN 000.4-2	14	521
GN 321.4-140-K16-A-DR	140	16.5	32	21	32.5	20	6	4	GN 000.4-2	16	508
GN 321.4-140-K16-A-ZI	140	16.5	32	21	32.5	20	6	4	GN 000.4-2	16	508
GN 321.4-160-K14-A-DR	160	18	32	21	32.5	20	6	4	GN 000.4-2	14	644
GN 321.4-160-K14-A-ZI	160	18	32	21	32.5	20	6	4	GN 000.4-2	14	644
GN 321.4-160-K16-A-DR	160	18	32	21	32.5	20	6	4	GN 000.4-2	16	631
GN 321.4-160-K16-A-ZI	160	18	32	21	32.5	20	6	4	GN 000.4-2	16	631
GN 321.4-200-K18-A-DR	200	20.5	38	26	36.5	24	6	4	GN 000.4-3	18	1042
GN 321.4-200-K18-A-ZI	200	20.5	38	26	36.5	24	6	4	GN 000.4-3	18	1042
GN 321.4-200-K20-A-DR	200	20.5	38	26	36.5	24	6	4	GN 000.4-3	20	1025
GN 321.4-200-K20-A-ZI	200	20.5	38	26	36.5	24	6	4	GN 000.4-3	20	1025
GN 321.4-250-K22-A-DR	250	23	45	30	47.5	28	12	4	GN 000.4-4	22	1623
GN 321.4-250-K22-A-ZI	250	23	45	30	47.5	28	12	4	GN 000.4-4	22	1623



STANDARD MACHINE ELEMENTS WORLDWIDE