

Adjustable hand levers

Zinc die casting, Bushing / Threaded bolt Steel

SPECIFICATION

Handle

Zinc die casting

plastic coated

black, RAL 9005, textured finish **SW**

black, RAL 9011, silk finish **SZ**

orange, RAL 2004, textured finish **OS**

red, RAL 3000, textured finish **RS**

silver, RAL 9006, textured finish **SR**

chrome-plated **CR**

uncoated, slide grinded **RH**

Version with threaded insert

Threaded insert and retaining screw

Steel, blackened

Version with threaded stud

Threaded stud and retaining screw

Steel, blackened



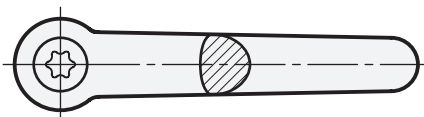
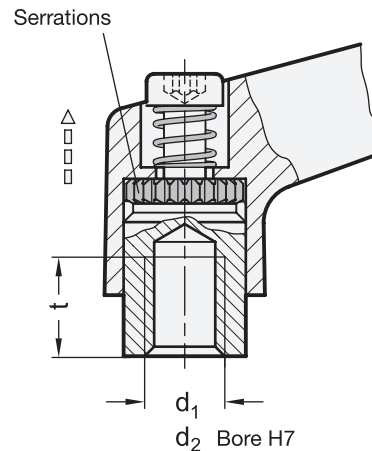
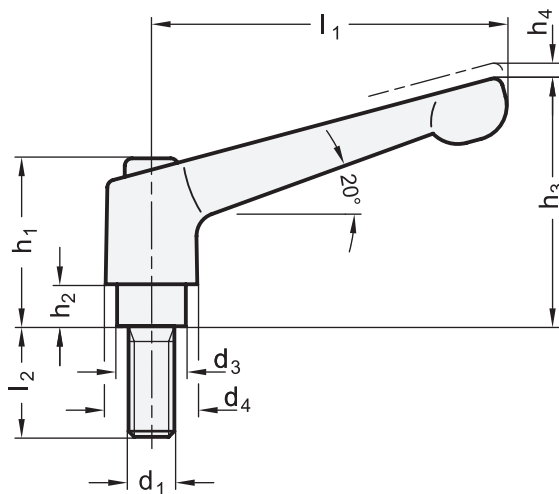
INFORMATION

Adjustable hand levers GN 300 are ideal whenever parts have to be clamped in a confined space or in a particular lever position. The centre insert is connected to the lever via serrations which can easily be disengaged.

Pulling the lever, disengages the serrations and allowing it to be swivelled to the ideal clamping position. On releasing the lever the serrations automatically re-engage.

TECHNICAL INFORMATION

- ISO-Fundamental Tolerances (see page A21)



* Complete with colour index of the clamping lever body (SW, SZ, OS, RS, SR, CR or RH)

SW SZ OS RS SR CR RH
 RAL9005 RAL9011 RAL2004 RAL3000 RAL9006 chrome-plated uncoated

GN 300-with threaded insert

Description	l1	d1	d2 H7	d3	d4	h1	h2	h3	h4	t min.	Δ
GN 300-30-B5-*	30	-	B 5	10	13	24.5	4	31	3.5	9	25
GN 300-30-B6-*	30	-	B 6	10	13	24.5	4	31	3.5	9	24
GN 300-30-M3-*	30	M 3	-	10	13	24.5	4	31	3.5	7	27
GN 300-30-M4-*	30	M 4	-	10	13	24.5	4	31	3.5	9	27
GN 300-30-M5-*	30	M 5	-	10	13	24.5	4	31	3.5	9	25
GN 300-30-M6-*	30	M 6	-	10	13	24.5	4	31	3.5	9	24
GN 300-45-B5-*	45	-	B 5	10	13	24.5	4	34	3.5	9	33
GN 300-45-B6-*	45	-	B 6	10	13	24.5	4	34	3.5	9	32
GN 300-45-M4-*	45	M 4	-	10	13	24.5	4	34	3.5	9	34
GN 300-45-M5-*	45	M 5	-	10	13	24.5	4	34	3.5	9	33
GN 300-45-M6-*	45	M 6	-	10	13	24.5	4	34	3.5	9	32
GN 300-63-B8-*	63	-	B 8	13.5	17.5	31	6.5	45	4	11	74
GN 300-63-M6-*	63	M 6	-	13.5	17.5	31	6.5	45	4	11	77
GN 300-63-M8-*	63	M 8	-	13.5	17.5	31	6.5	45	4	11	75
GN 300-78-B8-*	78	-	B 8	16	21	36	8	54	4	14	122
GN 300-78-B10-*	78	-	B 10	16	21	36	8	54	4	14	118
GN 300-78-M8-*	78	M 8	-	16	21	36	8	54	4	14	123
GN 300-78-M10-*	78	M 10	-	16	21	36	8	54	4	14	121
GN 300-92-B12-*	92	-	B 12	19	24	43	11	64	4	17	178
GN 300-92-M10-*	92	M 10	-	19	24	43	11	64	4	17	187
GN 300-92-M12-*	92	M 12	-	19	24	43	11	64	4	17	181
GN 300-108-B12-*	108	-	B 12	23	30	50.5	12	75	5	22	305
GN 300-108-B16-*	108	-	B 16	23	30	50.5	12	75	5	22	291
GN 300-108-M12-*	108	M 12	-	23	30	50.5	12	75	5	22	304
GN 300-108-M14-*	108	M 14	-	23	30	50.5	12	75	5	22	298
GN 300-108-M16-*	108	M 16	-	23	30	50.5	12	75	5	22	290

GN 300-with threaded stud

Description	l1	d1	l2	d3	d4	h1	h2	h3	h4	Δ
GN 300-30-M3-6-*	30	M 3	6	10	13	24.5	4	31	3.5	21
GN 300-30-M3-8-*	30	M 3	8	10	13	24.5	4	31	3.5	22
GN 300-30-M3-10-*	30	M 3	10	10	13	24.5	4	31	3.5	23
GN 300-30-M3-12-*	30	M 3	12	10	13	24.5	4	31	3.5	24
GN 300-30-M3-16-*	30	M 3	16	10	13	24.5	4	31	3.5	25
GN 300-30-M4-12-*	30	M 4	12	10	13	24.5	4	31	3.5	28
GN 300-30-M4-16-*	30	M 4	16	10	13	24.5	4	31	3.5	28
GN 300-30-M4-20-*	30	M 4	20	10	13	24.5	4	31	3.5	29
GN 300-30-M4-25-*	30	M 4	25	10	13	24.5	4	31	3.5	30
GN 300-30-M4-32-*	30	M 4	32	10	13	24.5	4	31	3.5	31
GN 300-30-M5-12-*	30	M 5	12	10	13	24.5	4	31	3.5	29
GN 300-30-M5-16-*	30	M 5	16	10	13	24.5	4	31	3.5	29
GN 300-30-M5-20-*	30	M 5	20	10	13	24.5	4	31	3.5	29
GN 300-30-M5-25-*	30	M 5	25	10	13	24.5	4	31	3.5	30
GN 300-30-M5-32-*	30	M 5	32	10	13	24.5	4	31	3.5	31
GN 300-30-M5-40-*	30	M 5	40	10	13	24.5	4	31	3.5	32
GN 300-30-M5-50-*	30	M 5	50	10	13	24.5	4	31	3.5	33
GN 300-30-M6-12-*	30	M 6	12	10	13	24.5	4	31	3.5	29
GN 300-30-M6-16-*	30	M 6	16	10	13	24.5	4	31	3.5	30
GN 300-30-M6-20-*	30	M 6	20	10	13	24.5	4	31	3.5	31



3

Clamping levers

* Complete with colour index of the clamping lever body (SW, SZ, OS, RS, SR, CR or RH)

SW SZ OS RS SR CR RH
 RAL9005 RAL9011 RAL2004 RAL3000 RAL9006 chrome-plated uncoated

GN 300-with threaded stud

Description	l1	d1	l2	d3	d4	h1	h2	h3	h4	Δ
GN 300-30-M6-25-*	30	M 6	25	10	13	24.5	4	31	3.5	32
GN 300-30-M6-32-*	30	M 6	32	10	13	24.5	4	31	3.5	33
GN 300-30-M6-40-*	30	M 6	40	10	13	24.5	4	31	3.5	35
GN 300-30-M6-50-*	30	M 6	50	10	13	24.5	4	31	3.5	36
GN 300-45-M4-12-*	45	M 4	12	10	13	24.5	4	34	3.5	35
GN 300-45-M4-16-*	45	M 4	16	10	13	24.5	4	34	3.5	39
GN 300-45-M4-20-*	45	M 4	20	10	13	24.5	4	34	3.5	39
GN 300-45-M4-25-*	45	M 4	25	10	13	24.5	4	34	3.5	39
GN 300-45-M4-32-*	45	M 4	32	10	13	24.5	4	34	3.5	40
GN 300-45-M5-12-*	45	M 5	12	10	13	24.5	4	34	3.5	35
GN 300-45-M5-16-*	45	M 5	16	10	13	24.5	4	34	3.5	36
GN 300-45-M5-20-*	45	M 5	20	10	13	24.5	4	34	3.5	37
GN 300-45-M5-25-*	45	M 5	25	10	13	24.5	4	34	3.5	38
GN 300-45-M5-32-*	45	M 5	32	10	13	24.5	4	34	3.5	39
GN 300-45-M5-40-*	45	M 5	40	10	13	24.5	4	34	3.5	40
GN 300-45-M5-50-*	45	M 5	50	10	13	24.5	4	34	3.5	42
GN 300-45-M6-12-*	45	M 6	12	10	13	24.5	4	34	3.5	36
GN 300-45-M6-16-*	45	M 6	16	10	13	24.5	4	34	3.5	37
GN 300-45-M6-20-*	45	M 6	20	10	13	24.5	4	34	3.5	38
GN 300-45-M6-25-*	45	M 6	25	10	13	24.5	4	34	3.5	39
GN 300-45-M6-32-*	45	M 6	32	10	13	24.5	4	34	3.5	41
GN 300-45-M6-40-*	45	M 6	40	10	13	24.5	4	34	3.5	41
GN 300-45-M6-50-*	45	M 6	50	10	13	24.5	4	34	3.5	43
GN 300-63-M6-12-*	63	M 6	12	13.5	17.5	31	6.5	45	4	80
GN 300-63-M6-16-*	63	M 6	16	13.5	17.5	31	6.5	45	4	80
GN 300-63-M6-20-*	63	M 6	20	13.5	17.5	31	6.5	45	4	82
GN 300-63-M6-25-*	63	M 6	25	13.5	17.5	31	6.5	45	4	83
GN 300-63-M6-32-*	63	M 6	32	13.5	17.5	31	6.5	45	4	84
GN 300-63-M6-40-*	63	M 6	40	13.5	17.5	31	6.5	45	4	85
GN 300-63-M6-50-*	63	M 6	50	13.5	17.5	31	6.5	45	4	86
GN 300-63-M6-63-*	63	M 6	63	13.5	17.5	31	6.5	45	4	88
GN 300-63-M8-12-*	63	M 8	12	13.5	17.5	31	6.5	45	4	82
GN 300-63-M8-16-*	63	M 8	16	13.5	17.5	31	6.5	45	4	84
GN 300-63-M8-20-*	63	M 8	20	13.5	17.5	31	6.5	45	4	85
GN 300-63-M8-25-*	63	M 8	25	13.5	17.5	31	6.5	45	4	86
GN 300-63-M8-32-*	63	M 8	32	13.5	17.5	31	6.5	45	4	88
GN 300-63-M8-40-*	63	M 8	40	13.5	17.5	31	6.5	45	4	93
GN 300-63-M8-50-*	63	M 8	50	13.5	17.5	31	6.5	45	4	95
GN 300-63-M8-63-*	63	M 8	63	13.5	17.5	31	6.5	45	4	98
GN 300-63-M10-20-*	63	M 10	20	13.5	17.5	31	6.5	45	4	88
GN 300-63-M10-25-*	63	M 10	25	13.5	17.5	31	6.5	45	4	91
GN 300-63-M10-32-*	63	M 10	32	13.5	17.5	31	6.5	45	4	94
GN 300-63-M10-40-*	63	M 10	40	13.5	17.5	31	6.5	45	4	96
GN 300-63-M10-50-*	63	M 10	50	13.5	17.5	31	6.5	45	4	103
GN 300-63-M10-63-*	63	M 10	63	13.5	17.5	31	6.5	45	4	108
GN 300-63-M10-80-*	63	M 10	80	13.5	17.5	31	6.5	45	4	118
GN 300-78-M8-16-*	78	M 8	16	16	21	36	8	54	4	131
GN 300-78-M8-20-*	78	M 8	20	16	21	36	8	54	4	132
GN 300-78-M8-25-*	78	M 8	25	16	21	36	8	54	4	133
GN 300-78-M8-32-*	78	M 8	32	16	21	36	8	54	4	136
GN 300-78-M8-40-*	78	M 8	40	16	21	36	8	54	4	140

Clamping levers 3

* Complete with colour index of the clamping lever body (SW, SZ, OS, RS, SR, CR or RH)

SW RAL9005
 SZ RAL9011
 OS RAL2004
 RS RAL3000
 SR RAL9006
 CR chrome-plated
 RH uncoated

GN 300-with threaded stud

Description	l1	d1	l2	d3	d4	h1	h2	h3	h4	⚖
GN 300-78-M8-50-*	78	M 8	50	16	21	36	8	54	4	145
GN 300-78-M8-63-*	78	M 8	63	16	21	36	8	54	4	147
GN 300-78-M8-80-*	78	M 8	80	16	21	36	8	54	4	152
GN 300-78-M10-16-*	78	M 10	16	16	21	36	8	54	4	137
GN 300-78-M10-20-*	78	M 10	20	16	21	36	8	54	4	139
GN 300-78-M10-25-*	78	M 10	25	16	21	36	8	54	4	141
GN 300-78-M10-32-*	78	M 10	32	16	21	36	8	54	4	145
GN 300-78-M10-40-*	78	M 10	40	16	21	36	8	54	4	149
GN 300-78-M10-50-*	78	M 10	50	16	21	36	8	54	4	154
GN 300-78-M10-63-*	78	M 10	63	16	21	36	8	54	4	160
GN 300-78-M10-80-*	78	M 10	80	16	21	36	8	54	4	170
GN 300-78-M12-25-*	78	M 12	25	16	21	36	8	54	4	145
GN 300-78-M12-32-*	78	M 12	32	16	21	36	8	54	4	150
GN 300-78-M12-40-*	78	M 12	40	16	21	36	8	54	4	156
GN 300-78-M12-50-*	78	M 12	50	16	21	36	8	54	4	163
GN 300-78-M12-63-*	78	M 12	63	16	21	36	8	54	4	171
GN 300-78-M12-80-*	78	M 12	80	16	21	36	8	54	4	183
GN 300-92-M10-16-*	92	M 10	16	19	24	43	11	64	4	199
GN 300-92-M10-20-*	92	M 10	20	19	24	43	11	64	4	202
GN 300-92-M10-25-*	92	M 10	25	19	24	43	11	64	4	205
GN 300-92-M10-32-*	92	M 10	32	19	24	43	11	64	4	209
GN 300-92-M10-40-*	92	M 10	40	19	24	43	11	64	4	213
GN 300-92-M10-50-*	92	M 10	50	19	24	43	11	64	4	219
GN 300-92-M10-63-*	92	M 10	63	19	24	43	11	64	4	224
GN 300-92-M10-80-*	92	M 10	80	19	24	43	11	64	4	235
GN 300-92-M12-16-*	92	M 12	16	19	24	43	11	64	4	206
GN 300-92-M12-20-*	92	M 12	20	19	24	43	11	64	4	209
GN 300-92-M12-25-*	92	M 12	25	19	24	43	11	64	4	215
GN 300-92-M12-32-*	92	M 12	32	19	24	43	11	64	4	220
GN 300-92-M12-40-*	92	M 12	40	19	24	43	11	64	4	224
GN 300-92-M12-50-*	92	M 12	50	19	24	43	11	64	4	230
GN 300-92-M12-63-*	92	M 12	63	19	24	43	11	64	4	242
GN 300-92-M12-80-*	92	M 12	80	19	24	43	11	64	4	250
GN 300-92-M16-25-*	92	M 16	25	19	24	43	11	64	4	226
GN 300-92-M16-32-*	92	M 16	32	19	24	43	11	64	4	234
GN 300-92-M16-40-*	92	M 16	40	19	24	43	11	64	4	245
GN 300-92-M16-50-*	92	M 16	50	19	24	43	11	64	4	259
GN 300-92-M16-63-*	92	M 16	63	19	24	43	11	64	4	276
GN 300-92-M16-80-*	92	M 16	80	19	24	43	11	64	4	311
GN 300-108-M12-25-*	108	M 12	25	23	30	50.5	12	75	5	350
GN 300-108-M12-32-*	108	M 12	32	23	30	50.5	12	75	5	320
GN 300-108-M12-40-*	108	M 12	40	23	30	50.5	12	75	5	307
GN 300-108-M12-50-*	108	M 12	50	23	30	50.5	12	75	5	340
GN 300-108-M12-63-*	108	M 12	63	23	30	50.5	12	75	5	365
GN 300-108-M12-80-*	108	M 12	80	23	30	50.5	12	75	5	383
GN 300-108-M12-120-*	108	M 12	120	23	30	50.5	12	75	5	410
GN 300-108-M16-25-*	108	M 16	25	23	30	50.5	12	75	5	355
GN 300-108-M16-32-*	108	M 16	32	23	30	50.5	12	75	5	365
GN 300-108-M16-40-*	108	M 16	40	23	30	50.5	12	75	5	376
GN 300-108-M16-50-*	108	M 16	50	23	30	50.5	12	75	5	388
GN 300-108-M16-63-*	108	M 16	63	23	30	50.5	12	75	5	407
GN 300-108-M16-80-*	108	M 16	80	23	30	50.5	12	75	5	429
GN 300-108-M16-120-*	108	M 16	120	23	30	50.5	12	75	5	476



Clamping levers