



# GN 296

## Installation kits

for position indicators used on square linear actuators GN 291.1



---

### Specification

#### Coding

- Coding **1**: for mechanical position indicators [DD51](#) / [DD52R](#)
- Coding **2**: for electronic position indicators [DD52R-E](#) / [DD51-E](#)

Adaptor shaft

Steel

blackened

Torque support

Aluminium

blank, ground

---

### Information

The GN 296 installation kits are needed for mounting a position indicator on linear units. The installation kits comprise an adapter shaft and a torque support including attachment screws.

Order mechanical position indicators [DD52R](#) / [DD51](#) / [DD50](#) with a counter pitch that corresponds to that of the trapezoidal threaded spindle.

For position indicators [DD52R-E](#) / [DD51-E](#), the position indicator pitch is programmed.

---

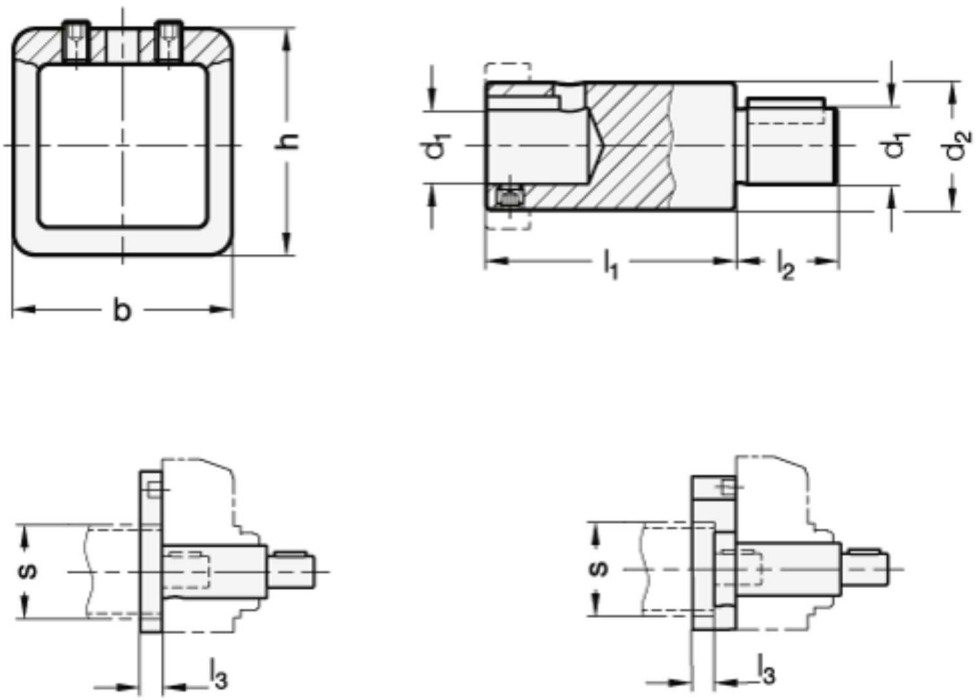
### Accessory

- Position indicators and handwheels have to be ordered separately.

---

### Technical Information

- [ISO-Fundamental tolerances](#)
-



### GN 296

Description	s	d <sub>1</sub>	d <sub>2</sub>	b	h	l <sub>1</sub>	l <sub>2</sub>	l <sub>3</sub>	For position indicator	Weight
<b>GN 296-30-8-1</b>	30	8	14	40	43.5	35	15	12	DD51	75
<b>GN 296-40-12-1</b>	40	12	20	50	43.5	39	16	12	DD52R	130
<b>GN 296-50-12-1</b>	50	12	20	60	56.5	39	17	12	DD52R	140
<b>GN 296-30-8-2</b>	30	8	14	40	56.5	36	15	12	DD51	58
<b>GN 296-40-12-2</b>	40	12	20	50	61.5	43	16	12	DD52R	123
<b>GN 296-50-12-2</b>	50	12	20	60	61.5	43	17	12	DD52R	122