

Installation kits

for position indicators used on linear actuators
GN 291, GN 292, GN 293, GN 391

SPECIFICATION

Identification no.

No. **1**: for mechanical position indicators DD52R (see page 721) / DD51 (see page 718)

No. **2**: for electronic position indicators DD52R-E (see page 726) / DD51-E (see page 724)

Adaptor shaft

Steel
blackened

Torque support
Aluminium
black anodized



INFORMATION

The GN 295 installation kits are needed for mounting a position indicator on linear units. The installation kits comprise an adaptor shaft and a torque support including attachment screws.

Order mechanical position indicators DD52R (see page 721) / DD51 (see page 718) / DD50 (see page 716) with a counter pitch that corresponds to that of the trapezoidal threaded spindle.

For position indicators DD52R-E (see page 726) / DD51-E (see page 724), the position indicator pitch is programmed.

ON REQUEST

- Linear actuators with analogue position indicator GA11 / GA12 (see page 695)

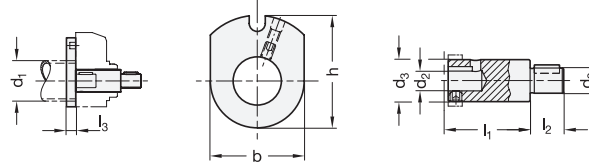
TECHNICAL INFORMATION

- ISO-Fundamental tolerances (see page A21)

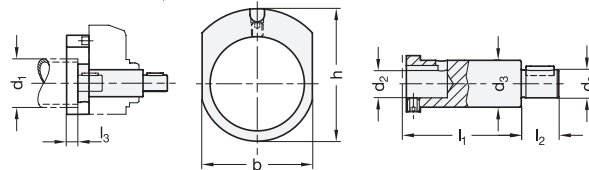
ACCESSORY

Position indicators and handwheels have to be ordered separately.

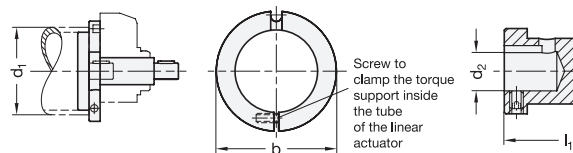
Identification no. 1 (Size $d_1 = 18 \dots 50$)



Identification no. 2 (Size $d_1 = 30 \dots 50$)



Identification no. 1 and 2 (Size $d_1 = 60$)



GN 295

Description	d_1	d_2 H7/f8	b	d_3	h	l_1	l_2	l_3	Position indicator	Δ
GN 295-18-6-1	18	6	24	10	33	28	16	10	DD50	80
GN 295-30-8-1	30	8	35	14	42	35	15	10	DD51 DD51-E	70
GN 295-30-8-2	30	8	35	14	42	42	15	10	DD51 DD51-E	82
GN 295-40-12-1	40	12	47	20	56.5	39	16	10	DD52R DD52R-E	120
GN 295-40-12-2	40	12	47	20	56.5	49	16	10	DD52R DD52R-E	168
GN 295-50-12-1	50	12	58	20	61	39	17	10	DD52R DD52R-E	118
GN 295-50-12-2	50	12	58	20	61	49	17	10	DD52R DD52R-E	162
GN 295-60-14-1	60	14	64	20	-	44	18	-	DD52R DD52R-E	154
GN 295-60-14-2	60	14	64	20	-	49	18	-	DD52R DD52R-E	155