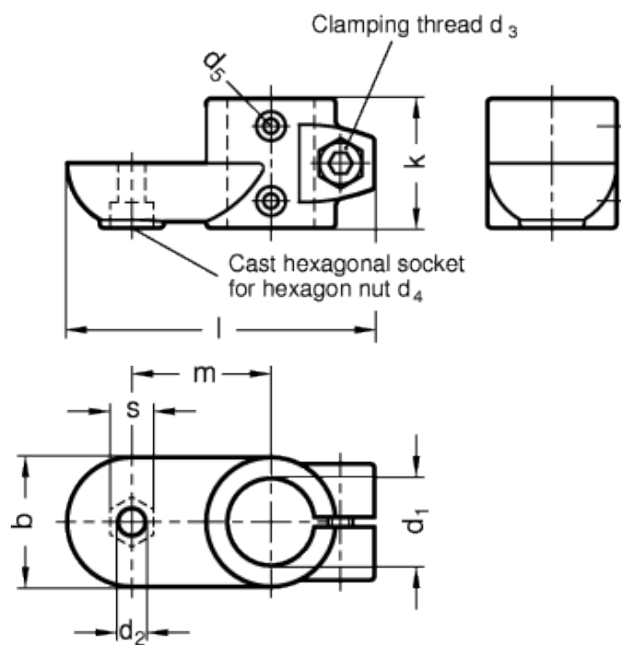


# GN 274.1

Pivoting connecting clamps  
for linear actuators

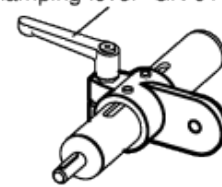


Type **OZ**  
without centring step

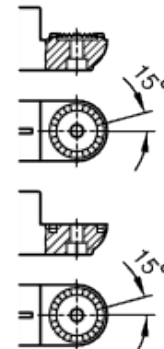


Type **MZ**  
with centring step

Adjustable  
clamping lever GN 911



Type **AV**  
with male serration



Type **IV**  
with female serration



technical informations

**Material**  
Aluminium.

**Finish**

Version SW: RAL 9005 black colour, matte finish, epoxy resin coating.

## Types

- Type OZ without centring step.
- Type MZ with centring step.
- Type AV with male serration.
- Type IV with female serration.

## Clamping screws

- Identification no. 1: with clamping screw DIN 912 and nut DIN 985, zinc-plated.
- Identification no. 2: with AISI 304 stainless steel-clamping screw DIN 912 and nut DIN 985.

## Assembly

The standard clamping bolts are socket cap screws DIN 912, supplied assembled. They can be replaced by clamping kits GN 911 (description see table of dimensions).

## Features and applications

Linear actuator connectors GN 274.1 are normally supplied only in connection with a mounted linear actuator and for function control.

By means of the clamping screw on the guide bore  $d_1$  the movement can either be set or the linear actuator connector can be clamped (after setting of final adjustment).

## Accessory

- Tubings GN 990.
- Linear actuators GN 291 to GN 293.
- Clamping kits [GN 911](#) (clamping handles GN 300.1 with distance bushing).

Standard Elements	Main dimensions												Clamping kits	Weight
Description	d <sub>1</sub> Bore without slider bush	d <sub>1</sub> Bore with slider bush	b	d <sub>2</sub>	d <sub>3</sub>	d <sub>4</sub>	d <sub>5</sub>	k	l	m	s	For d <sub>3</sub>	g	
GN 274.1-B30-OZ-1-SW	B 30	-	40	8.5	M 8	M 8	M 4	40	95	43	13	GN 911-M8-32	145	
GN 274.1-B40-OZ-1-SW	B 40	-	65	10.5	M 10	M 10	M 5	65	148	70	17	GN 911-M10-55	700	
GN 274.1-B50-OZ-1-SW	B 50	-	65	10.5	M 10	M 10	M 6	65	148	70	17	GN 911-M10-55	630	
GN 274.1-G30-OZ-1-SW	-	G 30	40	8.5	M 8	M 8	M 4	40	95	43	13	GN 911-M8-32	130	
GN 274.1-G40-OZ-1-SW	-	G 40	65	10.5	M 10	M 10	M 5	65	148	70	17	GN 911-M10-55	670	
GN 274.1-G50-OZ-1-SW	-	G 50	65	10.5	M 10	M 10	M 6	65	148	70	17	GN 911-M10-55	580	
GN 274.1-B30-MZ-1-SW	B 30	-	40	8.5	M 8	M 8	M 4	40	95	43	13	GN 911-M8-32	145	
GN 274.1-B40-MZ-1-SW	B 40	-	65	10.5	M 10	M 10	M 5	65	148	70	17	GN 911-M10-55	700	
GN 274.1-B50-MZ-1-SW	B 50	-	65	10.5	M 10	M 10	M 6	65	148	70	17	GN 911-M10-55	630	
GN 274.1-G30-MZ-1-SW	-	G 30	40	8.5	M 8	M 8	M 4	40	95	43	13	GN 911-M8-32	130	
GN 274.1-G40-MZ-1-SW	-	G 40	65	10.5	M 10	M 10	M 5	65	148	43	17	GN 911-M10-55	670	
GN 274.1-G50-MZ-1-SW	-	G 50	65	10.5	M 10	M 10	M 6	65	148	70	17	GN 911-M10-55	580	
GN 274.1-B30-AV-1-SW	B 30	-	40	8.5	M 8	M 8	M 4	40	95	43	13	GN 911-M8-32	145	
GN 274.1-B40-AV-1-SW	B 40	-	65	10.5	M 10	M 10	M 5	65	148	70	17	GN 911-M10-55	700	
GN 274.1-B50-AV-1-SW	B 50	-	65	10.5	M 10	M 10	M 6	65	148	70	17	GN 911-M10-55	630	
GN 274.1-G30-AV-1-SW	-	G 30	40	8.5	M 8	M 8	M 4	40	95	43	13	GN 911-M8-32	130	
GN 274.1-G40-AV-1-SW	-	G 40	65	10.5	M 10	M 10	M 5	65	148	70	17	GN 911-M10-55	670	
GN 274.1-G50-AV-1-SW	-	G 50	65	10.5	M 10	M 10	M 6	65	148	70	17	GN 911-M10-55	580	
GN 274.1-B30-IV-1-SW	B 30	-	40	8.5	M 8	M 8	M 4	40	95	43	13	GN 911-M8-32	145	
GN 274.1-B40-IV-1-SW	B 40	-	65	10.5	M 10	M 10	M 5	65	148	70	17	GN 911-M10-55	700	
GN 274.1-B50-IV-1-SW	B 50	-	65	10.5	M 10	M 10	M 6	65	148	70	17	GN 911-M10-55	630	
GN 274.1-G30-IV-1-SW	-	G 30	40	8.5	M 8	M 8	M 4	40	95	43	13	GN 911-M8-32	130	
GN 274.1-G40-IV-1-SW	-	G 40	65	10.5	M 10	M 10	M 5	65	148	70	17	GN 911-M10-55	670	
GN 274.1-G50-IV-1-SW	-	G 50	65	10.5	M 10	M 10	M 6	65	148	70	17	GN 911-M10-55	580	
GN 274.1-B30-OZ-2-SW	B 30	-	40	8.5	M 8	M 8	M 4	40	95	43	13	GN 911-M8-32	145	
GN 274.1-B40-OZ-2-SW	B 40	-	65	10.5	M 10	M 10	M 5	65	148	70	17	GN 911-M10-55	700	
GN 274.1-B50-OZ-2-SW	B 50	-	65	10.5	M 10	M 10	M 6	65	148	70	17	GN 911-M10-55	630	
GN 274.1-G30-OZ-2-SW	-	G 30	40	8.5	M 8	M 8	M 4	40	95	43	13	GN 911-M8-32	130	
GN 274.1-G40-OZ-2-SW	-	G 40	65	10.5	M 10	M 10	M 5	65	148	70	17	GN 911-M10-55	670	
GN 274.1-G50-OZ-2-SW	-	G 50	65	10.5	M 10	M 10	M 6	65	148	70	17	GN 911-M10-55	580	
GN 274.1-B30-MZ-2-SW	B 30	-	40	8.5	M 8	M 8	M 4	40	95	43	13	GN 911-M8-32	145	
GN 274.1-B40-MZ-2-SW	B 40	-	65	10.5	M 10	M 10	M 5	65	148	70	17	GN 911-M10-55	700	
GN 274.1-B50-MZ-2-SW	B 50	-	65	10.5	M 10	M 10	M 6	65	148	70	17	GN 911-M10-55	630	
GN 274.1-G30-MZ-2-SW	-	G 30	40	8.5	M 8	M 8	M 4	40	95	43	13	GN 911-M8-32	130	
GN 274.1-G40-MZ-2-SW	-	G 40	65	10.5	M 10	M 10	M 5	65	148	70	17	GN 911-M10-55	670	
GN 274.1-G50-MZ-2-SW	-	G 50	65	10.5	M 10	M 10	M 6	65	148	70	17	GN 911-M10-55	580	
GN 274.1-B30-AV-2-SW	B 30	-	40	8.5	M 8	M 8	M 4	40	95	43	13	GN 911-M8-32	145	
GN 274.1-B40-AV-2-SW	B 40	-	65	10.5	M 10	M 10	M 5	65	148	70	17	GN 911-M10-55	700	
GN 274.1-B50-AV-2-SW	B 50	-	65	10.5	M 10	M 10	M 6	65	148	70	17	GN 911-M10-55	630	
GN 274.1-G30-AV-2-SW	-	G 30	40	8.5	M 8	M 8	M 4	40	95	43	13	GN 911-M8-32	130	
GN 274.1-G40-AV-2-SW	-	G 40	65	10.5	M 10	M 10	M 5	65	148	70	17	GN 911-M10-55	670	
GN 274.1-G50-AV-2-SW	-	G 50	65	10.5	M 10	M 10	M 6	65	148	70	17	GN 911-M10-55	580	

GN 274.1-B30-IV-2-SW	B 30	-	40	8.5	M 8	M 8	M 4	40	95	43	13	GN 911-M8-32	145
GN 274.1-B40-IV-2-SW	B 40	-	65	10.5	M 10	M 10	M 5	65	148	70	17	GN 911-M10-55	700
GN 274.1-B50-IV-2-SW	B 50	-	65	10.5	M 10	M 10	M 6	65	148	70	17	GN 911-M10-55	630
GN 274.1-G30-IV-2-SW	-	G 30	40	8.5	M 8	M 8	M 4	40	95	43	13	GN 911-M8-32	130
GN 274.1-G40-IV-2-SW	-	G 40	65	10.5	M 10	M 10	M 5	65	148	70	17	GN 911-M10-55	670
GN 274.1-G50-IV-2-SW	-	G 50	65	10.5	M 10	M 10	M 6	65	148	70	17	GN 911-M10-55	580



STANDARD MACHINE ELEMENTS WORLDWIDE