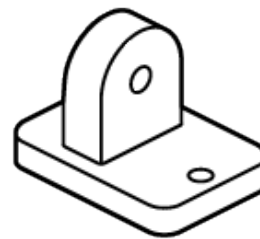
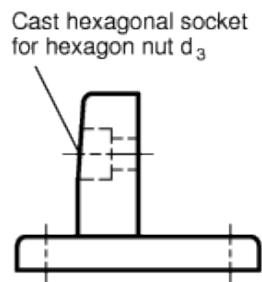
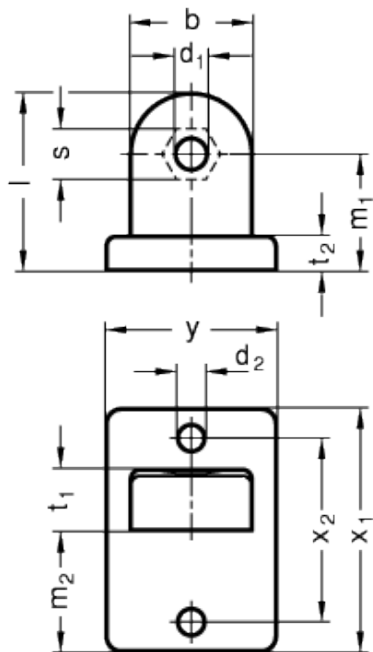


GN 271

Pivoting connecting clamp bases



technical informations

Material
Aluminium.

Finish

- Version SW: RAL 9005 black colour, matte finish, epoxy resin coating.
- Version BL: blank, matte shot-blasted.

Features and applications

Swivel clamp connector bases GN 271 can be assembled with the swivel clamp connectors GN 273, GN 275 or GN 277 to create swivel clamp connector joints.

Standard Elements	Main dimensions													Weight
Description	b	d ₁	d ₂	d ₃	l	m ₁	m ₂	t ₁	t ₂	s	x ₁	x ₂	y	g
GN 271-25-SW	25	6.5	5.5	M 6	36.5	24	25	12.5	7	10	50	38	35	44
GN 271-25-BL	25	6.5	5.5	M 6	36.5	24	25	12.5	7	10	50	38	35	44



STANDARD MACHINE ELEMENTS WORLDWIDE