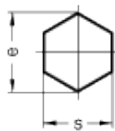
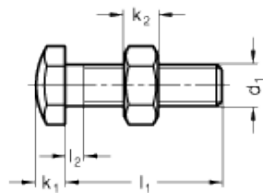


GN 251

Setting bolts, Type AK



Type **AK**



Mounting block GN 412.1



technical informations

Material

Black-oxide steel bolt with hardened hexagon head.

Locking nut

Steel zinc plated, blue passivated.

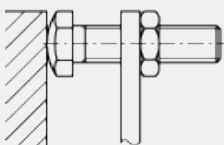
Standard execution available

Type AK: with lock nut.

Features and applications

Setting bolts GN 251 can be used as support or as end stop. They are normally used together with a locking nut.

Application example



Standard Elements	Main dimensions							Weight
Description	d ₁	l ₁	e	k ₁	k ₂	l _{2 max.}	s	g
GN 251-M3-10-AK	M3	10	6.4	2	2.4	1.5	5.5	10
GN 251-M3-15-AK	M3	15	6.4	2	2.4	1.5	5.5	13
GN 251-M3-20-AK	M3	20	6.4	2	2.4	1.5	5.5	16
GN 251-M3-25-AK	M3	25	6.4	2	2.4	1.5	5.5	18
GN 251-M3-30-AK	M3	30	6.4	2	2.4	1.5	5.5	19
GN 251-M4-10-AK	M4	10	8.1	2.8	3.2	2.1	7	23
GN 251-M4-15-AK	M4	15	8.1	2.8	3.2	2.1	7	26
GN 251-M4-20-AK	M4	20	8.1	2.8	3.2	2.1	7	30
GN 251-M4-25-AK	M4	25	8.1	2.8	3.2	2.1	7	34
GN 251-M4-30-AK	M4	30	8.1	2.8	3.2	2.1	7	37
GN 251-M4-35-AK	M4	35	8.1	2.8	3.2	2.1	7	41
GN 251-M4-40-AK	M4	40	8.1	2.8	3.2	2.1	7	44
GN 251-M5-10-AK	M5	10	9.2	3.5	4	2.4	8	35
GN 251-M5-15-AK	M5	15	9.2	3.5	4	2.4	8	40
GN 251-M5-20-AK	M5	20	9.2	3.5	4	2.4	8	48
GN 251-M5-25-AK	M5	25	9.2	3.5	4	2.4	8	53
GN 251-M5-30-AK	M5	30	9.2	3.5	4	2.4	8	60
GN 251-M5-35-AK	M5	35	9.2	3.5	4	2.4	8	65
GN 251-M5-40-AK	M5	40	9.2	3.5	4	2.4	8	70
GN 251-M5-50-AK	M5	50	9.2	3.5	4	2.4	8	85
GN 251-M6-15-AK	M6	15	11.5	4	5	3	10	70
GN 251-M6-20-AK	M6	20	11.5	4	5	3	10	78
GN 251-M6-25-AK	M6	25	11.5	4	5	3	10	86
GN 251-M6-30-AK	M6	30	11.5	4	5	3	10	90
GN 251-M6-35-AK	M6	35	11.5	4	5	3	10	105
GN 251-M6-40-AK	M6	40	11.5	4	5	3	10	120
GN 251-M6-50-AK	M6	50	11.5	4	5	3	10	140
GN 251-M8-15-AK	M8	15	15	5.5	6.5	3.7	13	145
GN 251-M8-20-AK	M8	20	15	5.5	6.5	3.7	13	160
GN 251-M8-25-AK	M8	25	15	5.5	6.5	3.7	13	175
GN 251-M8-30-AK	M8	30	15	5.5	6.5	3.7	13	190
GN 251-M8-35-AK	M8	35	15	5.5	6.5	3.7	13	205
GN 251-M8-40-AK	M8	40	15	5.5	6.5	3.7	13	230
GN 251-M8-50-AK	M8	50	15	5.5	6.5	3.7	13	270
GN 251-M8-60-AK	M8	60	15	5.5	6.5	3.7	13	285
GN 251-M8-70-AK	M8	70	15	5.5	6.5	3.7	13	315
GN 251-M8-80-AK	M8	80	15	5.5	6.5	3.7	13	345
GN 251-M10-30-AK	M10	30	19.6	7	8	4.5	17	145
GN 251-M10-35-AK	M10	35	19.6	7	8	4.5	17	145
GN 251-M10-40-AK	M10	40	19.6	7	8	4.5	17	170
GN 251-M10-50-AK	M10	50	19.6	7	8	4.5	17	200
GN 251-M10-60-AK	M10	60	19.6	7	8	4.5	17	205

GN 251-M10-70-AK	M10	70	19.6	7	8	4.5	17	210
GN 251-M10-80-AK	M10	80	19.6	7	8	4.5	17	250
GN 251-M12-30-AK	M12	30	21.9	8	10	5.2	19	528
GN 251-M12-35-AK	M12	35	21.9	8	10	5.2	19	560
GN 251-M12-40-AK	M12	40	21.9	8	10	5.2	19	600
GN 251-M12-50-AK	M12	50	21.9	8	10	5.2	19	670
GN 251-M12-60-AK	M12	60	21.9	8	10	5.2	19	700
GN 251-M12-70-AK	M12	70	21.9	8	10	5.2	19	780
GN 251-M12-80-AK	M12	80	5.221.9	8	10	5.2	19	800
GN 251-M16-50-AK	M16	50	27.7	10	13	6	24	150
GN 251-M16-60-AK	M16	60	27.7	10	13	6	24	155
GN 251-M16-70-AK	M16	70	27.7	10	13	6	24	160
GN 251-M16-80-AK	M16	80	27.7	10	13	6	24	175



STANDARD MACHINE ELEMENTS WORLDWIDE