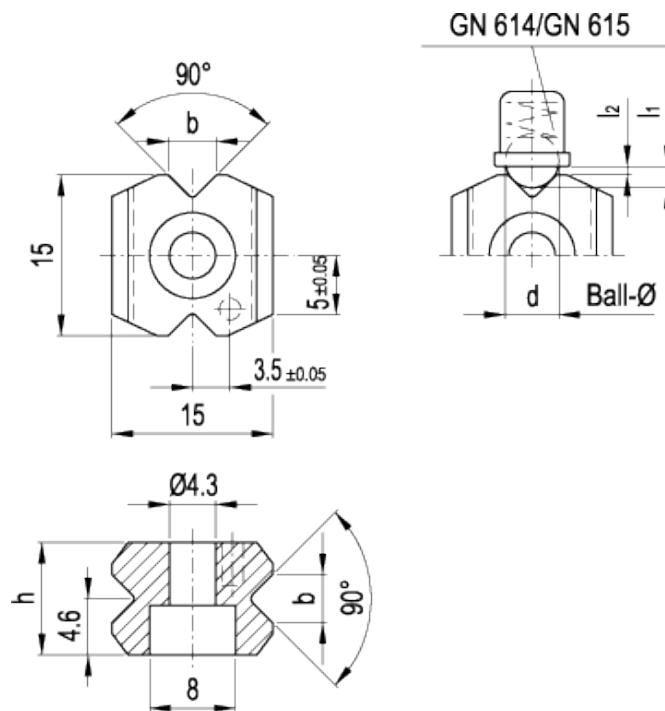


# GN 250

Indent blocks



technical informations

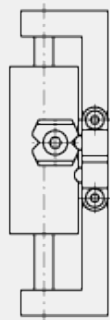
**Material**

Sintered and case-hardened black-oxide steel.

**Applications**

GN 250 indent blocks are used together with ball spring plungers type [GN 614](#), [GN 615](#) and [GN 615.2](#) for detenting or positioning sliding parts, flaps or similar applications.

Application example



Standard Elements	Main dimensions		GN 614				GN 615	GN 615.2	GN 615.3	Weight	
Description	h	b $\pm 0.1$	Dim.	d	l <sub>1</sub>	l <sub>2</sub>	Dim.	d	l <sub>1</sub>	l <sub>2</sub>	g
GN 250-8.5	8.5	3.4	6	5	1.6	0.9	M8	4.5	1.5	0.8	10
GN 250-10.5	10.5	4.5	8	6.5	1.9	1	M10	6	2	1	11



ELESA and GANTER models all rights reserved in accordance with the law. Always mention the source when reproducing our drawings.

STANDARD MACHINE ELEMENTS WORLDWIDE