

Wipers

for cam roller linear guide rails GN 2422

SPECIFICATION

Types

- Type **U**: for floating bearing rails
- Type **X**: for fixed bearing rails

Wiper

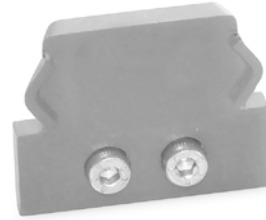
Plastic PUR, grey

Bracing core

Steel, zinc plated

Cylinder head screw DIN 912

Steel zinc plated, blue passivated



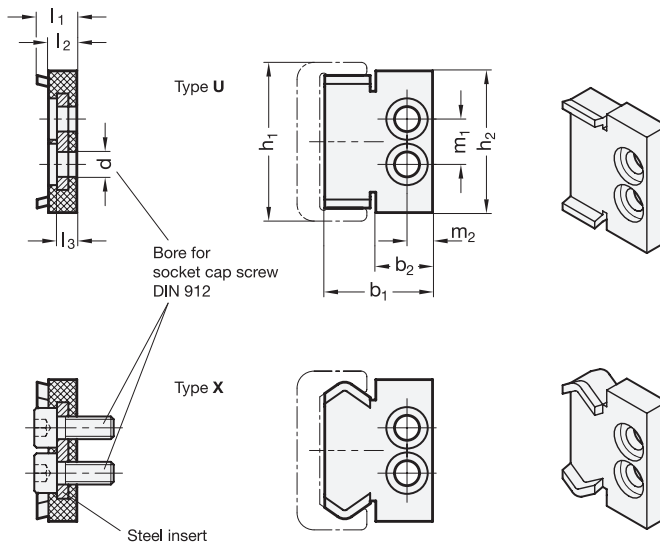
INFORMATION

Wipers GN 2428 protect against dirt deposits on rails and rollers.

For size $h_1 = 18$ the wiper is attached with only one central screw.

Screws are included parts of the order.

- Linear guide rail systems (see page 660)



GN 2428

Description	h1	b1	b2	d	h2	l1	l2	l3 max.	m1	m2	Δ
GN 2428-18-U	18	12.6	5.6	M 3	17	7	5	3.5	-	3.5	2
GN 2428-28-U	28	19	10	M 4	25	7	5	3.6	8	4.5	5
GN 2428-35-U	35	25.5	12.5	M 4	32	7	5	3.7	10	5.5	10
GN 2428-43-U	43	32.2	15	M 4	40	7	5	3.8	12	7.5	16
GN 2428-18-X	18	12.6	5.6	M 3	17	7	5	3.9	-	3.5	2
GN 2428-28-X	28	19	10	M 4	25	7	5	3.10	8	4.5	5
GN 2428-35-X	35	25.5	12.5	M 4	32	7	5	3.11	10	5.5	10
GN 2428-43-X	43	32.2	15	M 4	40	7	5	3.12	12	7.5	16

