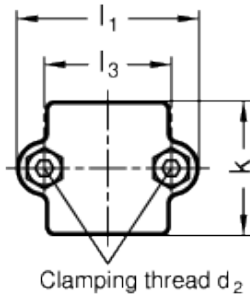
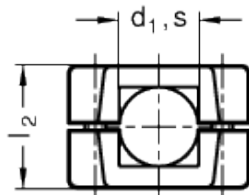
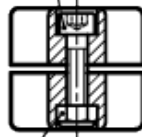


GN 241

Supports for round and square tubes

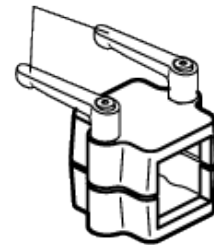


Clamping screw
Socket cap screw DIN 912



Hexagon nut DIN 985
self-locking (Polyamide ring)

Adjustable
clamping lever GN 911



technical informations

Material
Aluminium.

Finish

- Version SW: RAL 9005 black colour, matte finish, epoxy resin coating.
- Version BL: blank, matte shot-blasted.

Clamping screws

- Identification no. 1: with two clamping screws DIN 912 and nuts DIN 985, zinc-plated.
- Identification no. 2: with two AISI 304 stainless steel-clamping screws DIN 912 and nuts DIN 985.

Assembly

The standard clamping bolts are socket cap screws DIN 912, supplied assembled. They can be replaced by clamping kits GN 911 (description see table of dimensions).

Features and applications

The clamping bores of the tube connectors GN 241 are not machined and specially designed for construction tubings GN 990 or DIN 2391, DIN 2395 and DIN 2462 respectively.

Accessories

- Tubings [GN 990](#).
- Clamping kits [GN 911](#) (clamping handles GN 300.1 with distance bushing).

Standard Elements	Main dimensions							Clamping kits	Weight
Description	d _{1 hole}	S _{square hole}	k	d ₂	l ₁	l ₂	l ₃	For d ₂	g
GN 241-B20-50-1-*	B 20	-	50	M 8	68	46	48	GN 911-M8-40	200
GN 241-B25-50-1-*	B 25	-	50	M 8	68	46	48	GN 911-M8-40	195
GN 241-B30-50-1-*	B 30	-	50	M 8	68	46	48	GN 911-M8-40	190
GN 241-B30-60-1-*	B 30	-	60	M 8	79	59	58	GN 911-M8-55	190
GN 241-B32-60-1-*	B 32	-	60	M 8	79	59	58	GN 911-M8-55	190
GN 241-B35-60-1-*	B 35	-	60	M 8	79	59	58	GN 911-M8-55	190
GN 241-B40-60-1-*	B 40	-	60	M 8	79	59	58	GN 911-M8-55	190
GN 241-B40-76-1-*	B 40	-	76	M 10	98	70	73	GN 911-M10-63	525
GN 241-B42-76-1-*	B 42	-	76	M 10	98	70	73	GN 911-M10-63	505
GN 241-B45-76-1-*	B 45	-	76	M 10	98	70	73	GN 911-M10-63	500
GN 241-B48-76-1-*	B 48	-	76	M 10	98	70	73	GN 911-M10-63	490
GN 241-B50-76-1-*	B 50	-	76	M 10	98	70	73	GN 911-M10-63	475
GN 241-V20-50-1-*	-	V 20	50	M 8	68	46	48	GN 911-M8-40	195
GN 241-V25-50-1-*	-	V 25	50	M 8	68	46	48	GN 911-M8-40	190
GN 241-V30-50-1-*	-	V 30	50	M 8	68	46	48	GN 911-M8-40	180
GN 241-V30-60-1-*	-	V 30	60	M 8	79	59	58	GN 911-M8-55	180
GN 241-V35-60-1-*	-	V 35	60	M 8	79	59	58	GN 911-M8-55	180
GN 241-V40-60-1-*	-	V 40	60	M 8	79	59	58	GN 911-M8-55	180
GN 241-V40-76-1-*	-	V 40	76	M 10	98	70	73	GN 911-M10-63	180
GN 241-V45-76-1-*	-	V 45	76	M 10	98	70	73	GN 911-M10-63	475
GN 241-V50-76-1-*	-	V 50	76	M 10	98	70	73	GN 911-M10-63	450
GN 241-B20-50-2-*	B 20	-	50	M 8	68	46	48	GN 911-M8-40	190
GN 241-B25-50-2-*	B 25	-	50	M 8	68	46	48	GN 911-M8-40	195
GN 241-B30-50-2-*	B 30	-	50	M 8	68	46	48	GN 911-M8-40	190
GN 241-B30-60-2-*	B 30	-	60	M 8	79	59	58	GN 911-M8-55	190
GN 241-B32-60-2-*	B 32	-	60	M 8	79	59	58	GN 911-M8-55	190
GN 241-B35-60-2-*	B 35	-	60	M 8	79	59	58	GN 911-M8-55	190
GN 241-B40-60-2-*	B 40	-	60	M 8	79	59	58	GN 911-M8-55	190
GN 241-B40-76-2-*	B 40	-	76	M 10	98	70	73	GN 911-M10-63	505
GN 241-B42-76-2-*	B 42	-	76	M 10	98	70	73	GN 911-M10-63	505
GN 241-B45-76-2-*	B 45	-	76	M 10	98	70	73	GN 911-M10-63	505
GN 241-B48-76-2-*	B 48	-	76	M 10	98	70	73	GN 911-M10-63	505

GN 241-B50-76-2-*	B 50	-	76	M 10	98	70	73	GN 911-M10-63	505
GN 241-V20-50-2-*	-	V 20	50	M 8	68	46	48	GN 911-M8-40	180
GN 241-V25-50-2-*	-	V 25	50	M 8	68	46	48	GN 911-M8-40	180
GN 241-V30-50-2-*	-	V 30	50	M 8	68	46	48	GN 911-M8-40	180
GN 241-V30-60-2-*	-	V 30	60	M 8	79	59	58	GN 911-M8-55	180
GN 241-V35-60-2-*	-	V 35	60	M 8	79	59	58	GN 911-M8-55	180
GN 241-V40-60-2-*	-	V 40	60	M 8	79	59	58	GN 911-M8-55	180
GN 241-V40-76-2-*	-	V 40	76	M 10	98	70	73	GN 911-M10-63	450
GN 241-V45-76-2-*	-	V 45	76	M 10	98	70	73	GN 911-M10-63	450
GN 241-V50-76-2-*	-	V 50	76	M 10	98	70	73	GN 911-M10-63	450

* Complete the description of the standard item needed by adding the finish of the connector clamps: BL (blank) or SW (black).



STANDARD MACHINE ELEMENTS WORLDWIDE