

Stainless Steel-Plates

with tapped holes, for hinges

SPECIFICATION

Stainless Steel **NI**
matte, ground **MT**

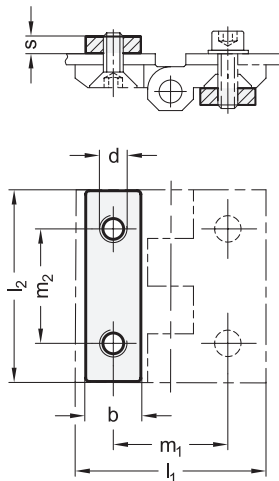
INFORMATION

Stainless Steel-Plates GN 2372 are designed as accessories for multiple families of hinges with dimensions that make additional threaded holes, nuts and washers unnecessary for mounting.

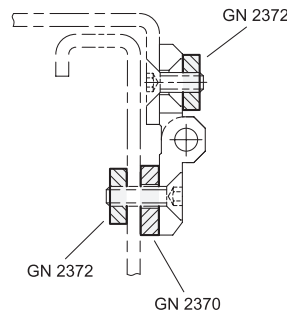
This eliminates the labor-intensive pre-installation of such parts as well as the need to hold them in place during tightening or loosening. Mounted to the top side of the hinge, the plate offers entirely new assembly options.

TECHNICAL INFORMATION

- Stainless Steel characteristics (see page A26)



Application example



GN 2372

STAINLESS STEEL

Description	l2	b	d	l1	m1	m2	s	Suitable for hinges with hole spacing m2	⚖
GN 2372-NI-30-MT	30	9	M 4	30	18	18	3	GN 237 GN 237.1	5
GN 2372-NI-40-MT	40	12	M 5	40	25	25	3	GN 235 GN 337 CFMY. GN 437 GN 7231 GN 7233 GN 7237 GN 237 GN 237.1	10
GN 2372-NI-50-MT	50	15	M 6	50	30	30	4	GN 235 GN 337 CFMY. GN 437 GN 7231 GN 7233 GN 7237 GN 237 GN 237.1 GN 237.3	20
GN 2372-NI-60-MT	60	18	M 8	60	36	36	4	GN 235 GN 337 CFMY. GN 437 GN 7231 GN 7233 GN 7237 GN 237 GN 237.1 GN 237.3 GN 437.1 GN 437.2 GN 437.3 GN 437.4	29