

Shallow T-Nuts

SPECIFICATION

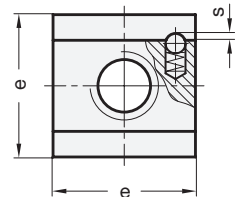
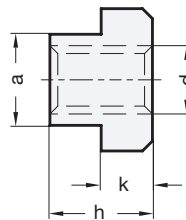
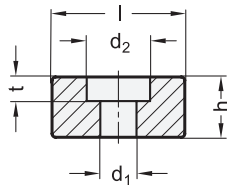
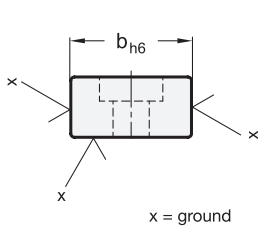
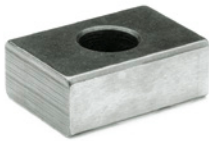
Steel
 - case hardened
 - blackened

INFORMATION

Shallow T-nuts GN 230 are used for aligning and positioning of jigs and fixtures on machining tables with T-slots DIN 650. For this purpose they are inserted into the aligning slots of the jig or fixture.

TECHNICAL INFORMATION

- ISO-Fundamental Tolerances (see page A21)



GN 230

Description	b h6	d1	d2	h	l	t	For screws DIN 84 DIN 912	⚖
GN 230-10	10	4.5	8	8	20	4.3	M4 x 10	10
GN 230-12	12	5.5	10	8	20	5.3	M5x12	11
GN 230-14	14	6.6	11	10	22	6.3	M6x16	19
GN 230-16	16	6.6	11	10	22	6.3	M6x16	20
GN 230-18	18	6.6	11	10	22	6.3	M6x16	25
GN 230-20	20	6.6	11	10	22	6.3	M6x16	28
GN 230-22	22	6.6	11	12	32	6.3	M6x16	59

T-Nuts

with slip proof

SPECIFICATION

Heat-treatable Steel
 Tensile strength class **8**
 zinc plated, blue passivated
 Tensile strength class **10**
 blackened

INFORMATION

T-nuts GN 508.2 are dimensionally identical to DIN 508 (see page 977). They are, however, fitted on the side with a spring loaded ball. This will prevent an unwanted movement of the nut, especially in a vertically mounted T-slot bed.

TECHNICAL INFORMATION

- Strength values of nuts (see page A20)



GN 508.2

Description	a -0.3/ -0.5	d	e	h	k	s	T-Slot width DIN 650	⚖
GN 508.2-10-M8-8	10	M 8	15	12	6	0.65	10	14
GN 508.2-10-M8-10	10	M 8	15	12	6	0.65	10	14
GN 508.2-12-M10-8	12	M 10	18	14	7	0.65	12	22
GN 508.2-12-M10-10	12	M 10	18	14	7	0.65	12	22
GN 508.2-14-M12-8	14	M 12	22	16	8	1	14	34
GN 508.2-14-M12-10	14	M 12	22	16	8	1	14	34
GN 508.2-18-M16-8	18	M 16	28	20	10	1	18	68
GN 508.2-18-M16-10	18	M 16	28	20	10	1	18	68
GN 508.2-22-M20-8	22	M 20	35	28	14	1.6	22	155
GN 508.2-22-M20-10	22	M 20	35	28	14	1.6	22	155

