

Countersunk Washers

Steel

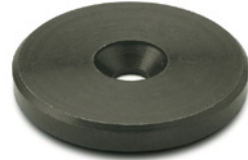
SPECIFICATION

- Steel
- Turned
 - Blackened

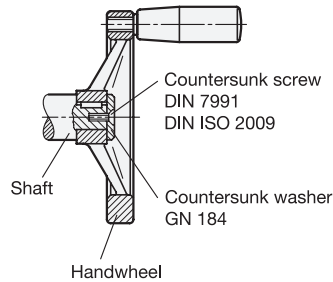
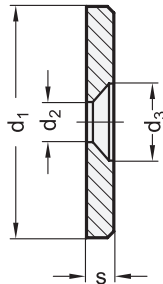
INFORMATION

Countersunk washers GN 184 are retained to the face of the shaft end with a countersunk head screw DIN ISO 2009 or DIN 7991 forming a clean-look end cap.

A typical application is the retention of handwheels with hub keyed to the shaft.



Application example:
Mounting
of a handwheel
with keyway
on a shaft



GN 184

Description	d ₁	d ₂	d ₃	s	For Countersunk screws	
					DIN 7991	DIN ISO 2009
GN 184-12	12	3.2	6.5	2.5	M 3	2
GN 184-16	16	4.3	8.5	3	M 4	4
GN 184-20	20	4.3	8.5	3	M 4	6
GN 184-22	22	5.3	10.3	3.5	M 5	8
GN 184-25	25	5.3	10.3	3.5	M 5	12
GN 184-28	28	5.3	10.3	3.5	M 5	15
GN 184-32	32	6.4	12.3	4	M 6	22
GN 184-36	36	6.4	12.3	4	M 6	29
GN 184-40	40	6.4	12.3	5	M 6	45
GN 184-45	45	6.4	12.3	6	M 6	71
GN 184-52	52	6.4	12.3	6	M 6	94