

## Off-Set Base Plate Connector Clamps

### Aluminum, Split Assembly

#### SPECIFICATION

##### Identification No.

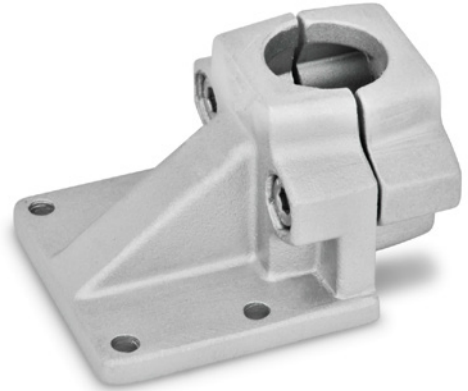
No. **2**: With 2 stainless steel socket cap screws DIN 912

Aluminum

- Powder coated  
Black, RAL 9005, textured finish **SW**
- Plain, matte shot-blasted **BL**

Socket cap screws DIN 912  
Stainless Steel AISI 304

Hex nuts DIN 985  
Stainless Steel AISI 304  
Self-locking via polyamide ring



#### INFORMATION

The clamping bore of off-set base plate connector clamps GN 166 is not machined and designed for construction tubes GN 990 (see page 1902) or DIN 2391, DIN 2395 and DIN 2462.

The versions with square bores are also suitable for use with **profile systems**.

At the screw locations **z**, the socket cap screws reduce the bore cross-section for clamping.

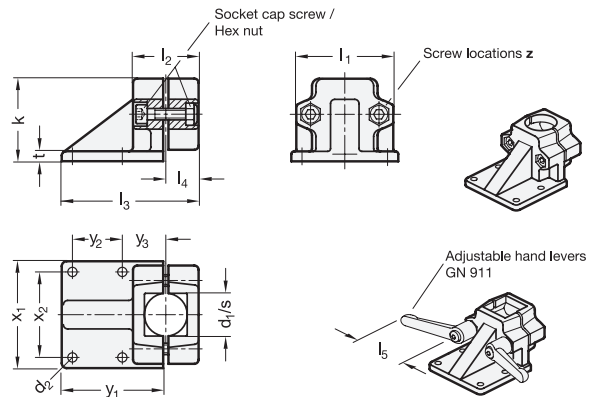
For clamping without tools, the socket cap screws can be replaced by the adjustable hand levers GN 911 (see page 1874) listed in the table as accessories.

#### ACCESSORY

- Adjustable Hand Levers GN 911 (see page 1874)

#### TECHNICAL INFORMATION

- Stainless Steel Characteristics (see page A26)



\* Complete with

**SW** BL  
RAL9005 Plain

#### GN 166-B

Description	d <sub>1</sub>	d <sub>2</sub>	k Clamping length	l <sub>1</sub>	l <sub>2</sub>	l <sub>3</sub>	l <sub>4</sub>	t	x <sub>1</sub>	x <sub>2</sub>	y <sub>1</sub>	y <sub>2</sub>	y <sub>3</sub>	z Screw locations	Accessory Recom. hand lever GN 911 for z l <sub>5</sub>	⚖️
GN 166-B20-2-*	B 20	7	58	69	46	96	23	7	75	60	72	35	30	M8-35	63   78	297
GN 166-B25-2-*	B 25	7	58	69	46	96	23	7	75	60	72	35	30	M8-35	63   78	291
GN 166-B30-2-*	B 30	7	58	69	46	96	23	7	75	60	72	35	30	M8-35	63   78	286
GN 166-B40-2-*	B 40	11	91	98	70	145	35	14	115	90	108	50	45	M10-60	78   92	870
GN 166-B42-2-*	B 42	11	91	98	70	145	35	14	115	90	108	50	45	M10-60	78   92	850
GN 166-B45-2-*	B 45	11	91	98	70	145	35	14	115	90	108	50	45	M10-60	78   92	840
GN 166-B48-2-*	B 48	11	91	98	70	145	35	14	115	90	108	50	45	M10-60	78   92	830
GN 166-B50-2-*	B 50	11	91	98	70	145	35	14	115	90	108	50	45	M10-60	78   92	815

#### GN 166-S

Description	s	d <sub>2</sub>	k Clamping length	l <sub>1</sub>	l <sub>2</sub>	l <sub>3</sub>	l <sub>4</sub>	t	x <sub>1</sub>	x <sub>2</sub>	y <sub>1</sub>	y <sub>2</sub>	y <sub>3</sub>	z Screw locations	Accessory Recom. hand lever GN 911 for z l <sub>5</sub>	⚖️
GN 166-V20-2-*	V 20	7	58	69	46	96	23	7	75	60	72	35	30	M8-35	63   78	290
GN 166-V25-2-*	V 25	7	58	69	46	96	23	7	75	60	72	35	30	M8-35	63   78	250
GN 166-V30-2-*	V 30	7	58	69	46	96	23	7	75	60	72	35	30	M8-35	63   78	190
GN 166-V40-2-*	V 40	11	91	98	70	145	35	14	115	90	108	50	45	M10-60	78   92	900
GN 166-V45-2-*	V 45	11	91	98	70	145	35	14	115	90	108	50	45	M10-60	78   92	815
GN 166-V50-2-*	V 50	11	91	98	70	145	35	14	115	90	108	50	45	M10-60	78   92	776

Weight SW