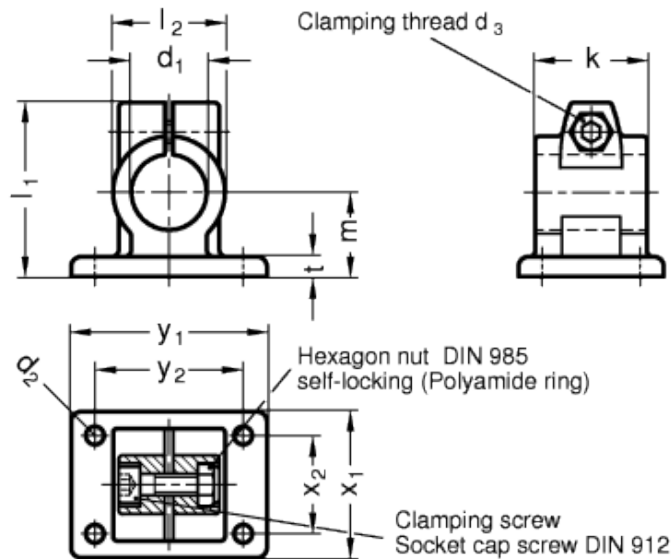
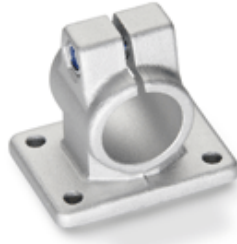
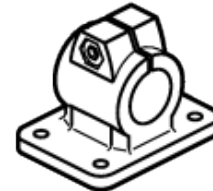
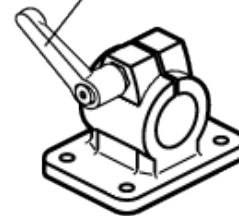


# GN 146

Connecting clamps with mounting base



Adjustable clamping lever GN 911



## technical informations

**Material**  
Aluminium.

## Finish

- Version SW: RAL 9005 black colour, matte finish, epoxy resin coating.
- Version BL: blank, matte shot-blasted.

## Clamping screws

- Identification no. 1: with clamping screw DIN 912 and nut DIN 985, zinc-plated.
- Identification no. 2: with AISI 304 stainless steel-clamping screw DIN 912 and nut DIN 985.

## Assembly

The standard clamping bolts are socket cap screws DIN 912, supplied assembled. They can be replaced by clamping kits GN 911 (description see table of dimensions).

## Features and applications

The clamping bores of the flanged connector clamps GN 146 are machined and designed for construction tubings GN 990 or DIN 2391, DIN 2395 and DIN 2462 respectively.

## Accessories

- Tubings [GN 990](#).
- Clamping kits [GN 911](#) (clamping handles GN 300.1 with distance bushing).

Standard Elements	Main dimensions												Clamping kits	Weight
Description	d <sub>1</sub>	k	d <sub>2</sub>	d <sub>3</sub>	l <sub>1</sub>	l <sub>2</sub>	m	t	x <sub>1</sub>	x <sub>2</sub>	y <sub>1</sub>	y <sub>2</sub>	For d <sub>3</sub>	g
GN 146-B20-40-1-*	B 20	40	6.5	M 8	62	40	30	7	52	35	70	53	GN 911-M8-32	194
GN 146-B25-40-1-*	B 25	40	6.5	M 8	62	40	30	7	52	35	70	53	GN 911-M8-32	179
GN 146-B30-40-1-*	B 30	40	6.5	M 8	62	40	30	7	52	35	70	53	GN 911-M8-32	159
GN 146-B30-56-1-*	B 30	56	8.5	M 10	83	56	42	10	78	52	108	82	GN 911-M10-40	511
GN 146-B32-56-1-*	B 32	56	8.5	M 10	83	56	42	10	78	52	108	82	GN 911-M10-40	476
GN 146-B35-56-1-*	B 35	56	8.5	M 10	83	56	42	10	78	52	108	82	GN 911-M10-40	480
GN 146-B40-56-1-*	B 40	56	8.5	M 10	83	56	42	10	78	52	108	82	GN 911-M10-40	438
GN 146-B40-65-1-*	B 40	65	11	M 10	95	65	50	14	92	62	128	98	GN 911-M10-55	794
GN 146-B42-65-1-*	B 42	65	11	M 10	95	65	50	14	92	62	128	98	GN 911-M10-55	764
GN 146-B45-65-1-*	B 45	65	11	M 10	95	65	50	14	92	62	128	98	GN 911-M10-55	736
GN 146-B48-65-1-*	B 48	65	11	M 10	95	65	50	14	92	62	128	98	GN 911-M10-55	694
GN 146-B50-65-1-*	B 50	65	11	M 10	95	65	50	14	92	62	128	98	GN 911-M10-55	683
GN 146-B50-80-1-*	B 50	80	11	M 10	112	80	60	14	110	74	154	118	GN 911-M10-55	1320
GN 146-B55-80-1-*	B 55	80	11	M 10	112	80	60	14	110	74	154	118	GN 911-M10-55	1220
GN 146-B60-80-1-*	B 60	80	11	M 10	112	80	60	14	110	74	154	118	GN 911-M10-55	1120
GN 146-B20-40-2-*	B 20	40	6.5	M 8	62	40	30	7	52	35	70	53	GN 911-M8-32	194
GN 146-B25-40-2-*	B 25	40	6.5	M 8	62	40	30	7	52	35	70	53	GN 911-M8-32	179
GN 146-B30-40-2-*	B 30	40	6.5	M 8	62	40	30	7	52	35	70	53	GN 911-M8-32	159
GN 146-B30-56-2-*	B 30	56	8.5	M 10	83	56	42	10	78	52	108	82	GN 911-M10-40	510
GN 146-B32-56-2-*	B 32	56	8.5	M 10	83	56	42	10	78	52	108	82	GN 911-M10-40	476
GN 146-B35-56-2-*	B 35	56	8.5	M 10	83	56	42	10	78	52	108	82	GN 911-M10-40	480
GN 146-B40-56-2-*	B 40	56	8.5	M 10	83	56	42	10	78	52	108	82	GN 911-M10-40	435
GN 146-B40-65-2-*	B 40	65	11	M 10	95	65	50	14	92	62	128	98	GN 911-M10-55	794
GN 146-B42-65-2-*	B 42	65	11	M 10	95	65	50	14	92	62	128	98	GN 911-M10-55	760
GN 146-B45-65-2-*	B 45	65	11	M 10	95	65	50	14	92	62	128	98	GN 911-M10-55	736
GN 146-B48-65-2-*	B 48	65	11	M 10	95	65	50	14	92	62	128	98	GN 911-M10-55	694
GN 146-B50-65-2-*	B 50	65	11	M 10	95	65	50	14	92	62	128	98	GN 911-M10-55	680
GN 146-B50-80-2-*	B 50	80	11	M 10	112	80	60	14	110	74	154	118	GN 911-M10-55	1320
GN 146-B55-80-2-*	B 55	80	11	M 10	112	80	60	14	110	74	154	118	GN 911-M10-55	1120
GN 146-B60-80-2-*	B 60	80	11	M 10	112	80	60	14	110	74	154	118	GN 911-M10-55	1120

\*Complete the description of the standard item needed by adding the finish of the connector clamps: BL (blank) or SW (black).



STANDARD MACHINE ELEMENTS WORLDWIDE