

Telescopic slides

with full extension and self-retracting mechanism, load capacity up to 430 N

SPECIFICATION

Type

Type **F**: with rubber stop, locking device in back. detach function

Identification no.

No. **1**: Fastening using through-holes

Slide profile

Steel, zinc plated, blue passivated **ZB**

Bearings

Roller bearing steel, hardened

Ball cage, outer slide

Plastic

Ball cage, inner slide

Steel, zinc plated

Rubber stop and detach function

Plastic / Elastomer

Self-retracting mechanism

Zinc plated steel / plastic

Operating temperature -20 °C to 100 °C



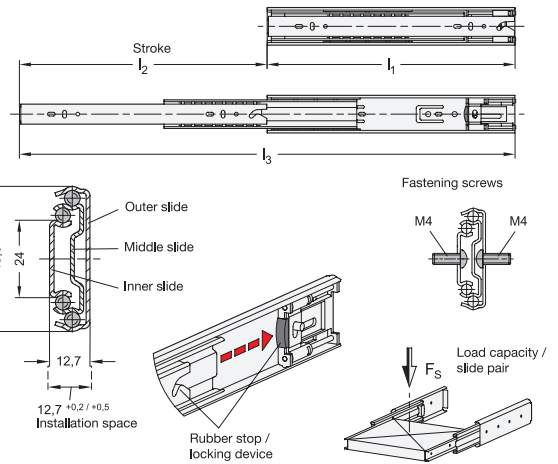
INFORMATION

Telescopic slides GN 1412 are installed vertically and in pairs. The stroke reaches $\approx 100\%$ of the nominal length l_1 (full extension). The rubber stops of type F dampen the impact of the slide in the end positions. This feature minimizes noise development and increases the lifespan. If larger static or dynamic loads occur in the direction of extension, they should be absorbed by external stop elements.

The telescopic slides are delivered in **pairs**. They can be installed on the extension on either the left or right side due to the mechanics. All mounting holes are easy to reach through auxiliary holes. Only the mounting holes are shown, but other production-related holes may be present.

ON REQUEST

- other lengths and hole spacing
- other attachment options
- other surfaces

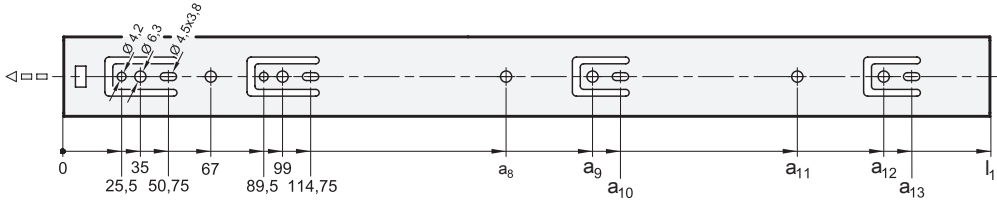


GN 1412

Description	l_1	$l_2 + 3/-3$	l_3	F_s per pair in N at 10,000 cycles	F_s per pair in N at 100,000 cycles	
GN 1412-300-F-1-ZB	300*	300	600	330	240	880
GN 1412-350-F-1-ZB	350*	350	700	380	290	1040
GN 1412-400-F-1-ZB	400*	400	800	430	340	1200
GN 1412-450-F-1-ZB	450*	450	900	430	340	1480
GN 1412-500-F-1-ZB	500*	500	1000	380	290	1400
GN 1412-550-F-1-ZB	550*	550	1100	330	240	1630
GN 1412-600-F-1-ZB	600*	600	1200	320	240	1840
GN 1412-650-F-1-ZB	650*	650	1300	300	220	1990
GN 1412-700-F-1-ZB	700*	700	1400	300	220	2150

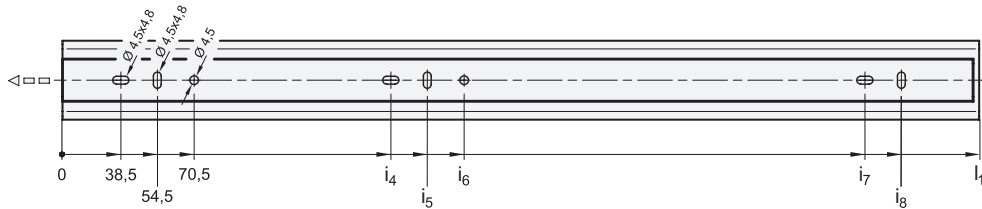
* The telescopic slides are delivered in pairs.

Mounting holes - Outer slide



l1	a8	a9	a10	a11	a12	a13
300	-	195	207.75	227	-	-
350	-	227	239.75	259	-	-
400	259	291	303.75	323	-	-
450	259	323	335.75	-	-	-
500	259	323	335.75	-	387	399.75
550	259	323	335.75	387	451	463.75
600	259	355	367.75	387	483	495.75
650	259	355	367.75	451	515	527.75
700	259	355	367.75	515	579	591.75

Mounting holes - Inner slide



l1	i4	i5	i6	i7	i8
300	230.5	246.5	262.5	-	-
350	150.5	166.5	182.5	292.5	308.5
400	170.5	186.5	202.5	341.5	357.5
450	195.5	211.5	227.5	391.5	407.5
500	220.5	236.5	252.5	441.5	457.5
550	250.5	266.5	282.5	492.5	508.5
600	260.5	276.5	292.5	541.5	557.5
650	260.5	276.5	292.5	602.5	618.5
700	260.5	276.5	292.5	652.5	668.5

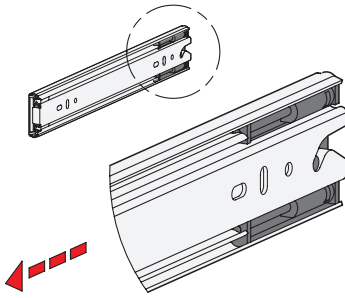
Fastening screws

For the said loading forces F_s to be absorbed reliably in the surrounding structure, all available through-holes of the outer slide having a diameter (\varnothing) of 4.2 and of the inner slide having a diameter (\varnothing) of 4.5 must be used. Alternatively, the outer slide has holes with a diameter (\varnothing) of 6.3 for Euro screws. The elongated holes, $\varnothing 4.5 \times 3.8$ of the outer slide and $\varnothing 4.5 \times 4.8$ of the inner slide, are used likewise for fastening and facilitate adjustment during mounting when needed. Failure to use fastening screws reduces the specified load capacity accordingly. The following screws can be used for mounting:

Designation - standard	Outer slide	Inner slide
Hexagon socket button head screw ISO 7380	M 4	M 4
Pan head screw, Phillips ISO 7045	M 4	M 4
Pan head tapping screw, Phillips ISO 7049	ST 3.9 / 4.2	ST 3.9 / 4.2



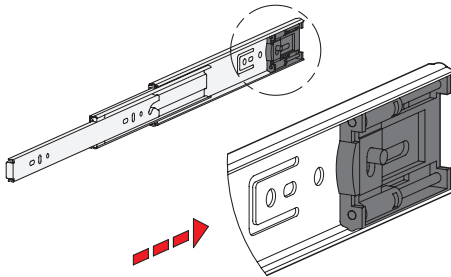
Self-retracting mechanism



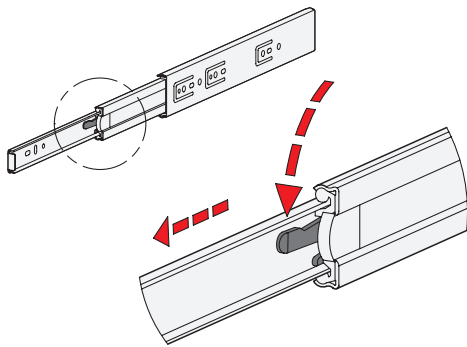
Telescopic slides GN 1412 have an integrated self-retracting mechanism, which improves considerably the ease of use when closing the extensions.

The slides are retracted and held in the back end position automatically by means of a retraction mechanism on the last 30 mm of stroke with a force of approximately 25 newtons for each slide pair.

In this slide variant the available retraction force can be regarded as a locking device, which is noticeable through a slight restriction on opening the extension.



Detach function



Type F has additionally a detach function through which the extension slides can be completely separated from one another in the area of the middle and inner slide. This feature not only facilitates mounting. It also allows the extension to be quickly removed, for example, when frequent maintenance work is performed on the components located behind.

The telescopic slide can be quickly and easily detached in the extracted position through activation of the release lever, allowing the inner slide to be removed from the front.

For reattaching the slides, the ball cages need to be moved to the front end position. Then the inner slide is inserted to the back end stop where it locks into place automatically.

The protected arrangement of the release mechanism prevents accidental detachment of the slide.

