

Two-Way Linear Actuator Connectors

Aluminum / Stainless Steel, for Two-Axis System

SPECIFICATION

Identification no.

- No. **2**: With 2 stainless steel socket cap screws DIN 912

Aluminum

Powder coated

Black, RAL 9005, textured finish **SW**

Stainless Steel AISI CF-8 **NI**

Matte shot-blasted

Only with sleeve bearing

Sleeve bearing

Plastic (PTFE)

Socket cap screws DIN 912

Stainless steel AISI 304

Hex nuts DIN 985

Stainless steel AISI 304

Self-locking via polyamide ring



INFORMATION

Two-way linear actuator connectors GN 131.2 are based on two-way connector clamps. The additionally provided mounting holes are used to connect to the drive key of a linear actuator. Bores with the designation „G“ are equipped with sleeve bearings.

With the screw locations **z**, the play of the guide bores d_1 / d_2 can be adjusted or the linear actuator connectors can be clamped after adjustment.

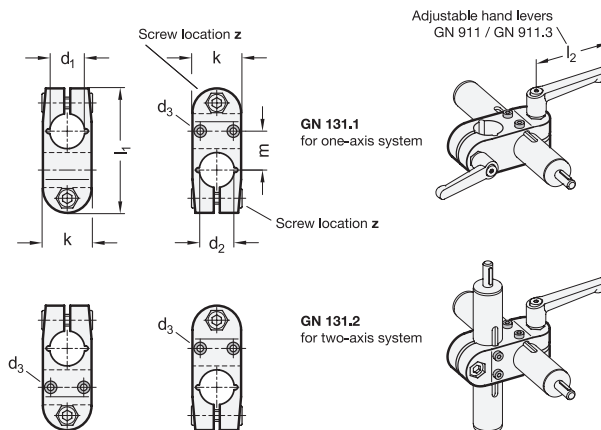
For clamping without tools, the socket cap screws can be replaced by the adjustable hand levers GN 911 (see page 1874) / GN 911.3 (see page 1875) listed in the table as accessories.

ACCESSORY

- Adjustable Hand Levers GN 911
(see page 1874) / GN 911.3 (see page 1875)

TECHNICAL INFORMATION

- Plastic Characteristics (see page A2)
- Stainless Steel Characteristics (see page A26)



GN 131.2-AL

Description	$d_1 - d_2$ without sleeve bearing	$d_1 - d_2$ with sleeve bearing	d_3 Mounting screws on the drive key	k Clamping length	l_1	m	z Screw locations	Accessory Recom. hand lever GN 911 for z l_2	⚖
GN 131.2-B18-B18-2-SW	B 18 - B 18	-	M 3	25	64	20	M6-20	45 63	62
GN 131.2-G18-G18-2-SW	-	G 18 - G 18	M 3	25	64	20	M6-20	45 63	64

GN 131.2-NI

STAINLESS STEEL

Description	$d_1 - d_2$ with sleeve bearing	d_3 Mounting screws on the drive key	k Clamping length	l_1	m	z Screw locations	Accessory Recom. hand lever GN 911.3 for z l_2	⚖
GN 131.2-G18-G18-2-NI	G 18 - G 18	M 3	25	64	20	M6-20	45 63	148