

Knurled grip knobs

Technopolymer

MATERIAL

Glass-fibre reinforced polyamide based (PA) technopolymer.

STANDARD EXECUTIONS

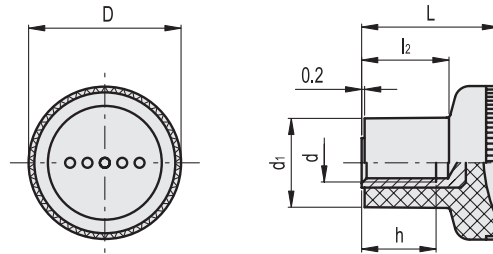
- **EKK-B:** brass boss, tapped blind hole. Ergostyle colours, matte finish.
- **EKK-p:** zinc-plated steel threaded stud, chamfered end UNI 947 : ISO 4753 (see Technical Data). Colour grey-black, matte finish.

SPECIAL EXECUTIONS ON REQUEST

The knurled grip knobs EKK-p can be provided in one of the other Ergostyle colours.



EKK-B



*Complete with colour index, example: 242081-C2 EKK.16 B-M3-C2

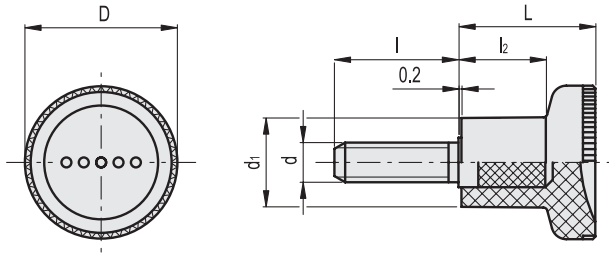


EKK-B

Code	Description	D	L	di	d6H	h	l2	⚖
242081-*	EKK.16 B-M3-*	16	13	8.5	M3	6	8.5	7
242086-*	EKK.16 B-M4-*	16	13	8.5	M4	6	8.5	6
242091-*	EKK.18 B-M4-*	18	15.5	10.5	M4	6	10.5	6
242096-*	EKK.18 B-M5-*	18	15.5	10.5	M5	6	10.5	5
242111-*	EKK.21 B-M4-*	21	18	12.5	M4	10	10.5	8
242121-*	EKK.21 B-M5-*	21	18	12.5	M5	10	10.5	7
242126-*	EKK.21 B-M6-*	21	18	12.5	M6	10	10.5	6
242211-*	EKK.25 B-M6-*	25	22.5	14.5	M6	12	14	11
242221-*	EKK.25 B-M8-*	25	22.5	14.5	M8	12	14	10
242301-*	EKK.31 B-M6-*	31	27	18.5	M6	15	17	21
242311-*	EKK.31 B-M8-*	31	27	18.5	M8	15	17	20
242321-*	EKK.31 B-M10-*	31	27	18.5	M10	17	17	19
242401-*	EKK.35 B-M6-*	35	27.5	20	M6	16	17	22
242411-*	EKK.35 B-M8-*	35	27.5	20	M8	15	17	25
242421-*	EKK.35 B-M10-*	35	27.5	20	M10	17	17	25



EKK-p



EKK-p

Code	Description	D	L	d ₁	d _{6g}	l	l ₂	⚖
243001-C1	EKK.16-p M3x10-C1	16	13	8.5	M3	10	8.5	8
243006-C1	EKK.16-p M3x16-C1	16	13	8.5	M3	16	8.5	9
243008-C1	EKK.16-p-M4x10-C1	16	13	8.5	M4	10	8.5	8
243009-C1	EKK.16-p-M4x16-C1	16	13	8.5	M4	16	8.5	10
243111-C1	EKK.18-p M4x10-C1	18	15.5	10.5	M4	10	10.5	9
243116-C1	EKK.18-p M4x16-C1	18	15.5	10.5	M4	16	10.5	10
243117-C1	EKK.18-p-M5x10-C1	18	15.5	10.5	M5	10	10.5	9
243118-C1	EKK.18-p-M5x16-C1	18	15.5	10.5	M5	16	10.5	10
243119-C1	EKK.18-p-M5x20-C1	18	15.5	10.5	M5	20	10.5	12
243121-C1	EKK.21 p-M5x10-C1	21	18	12.5	M5	10	10.5	10
243126-C1	EKK.21 p-M5x16-C1	21	18	12.5	M5	16	10.5	11
243131-C1	EKK.21 p-M5x20-C1	21	18	12.5	M5	20	10.5	12
243146-C1	EKK.21 p-M6x16-C1	21	18	12.5	M6	16	10.5	11
243151-C1	EKK.21 p-M6x20-C1	21	18	12.5	M6	20	10.5	12
243161-C1	EKK.21 p-M6x30-C1	21	18	12.5	M6	30	10.5	14
243226-C1	EKK.25 p-M6x16-C1	25	22.5	14.5	M6	16	14	13
243231-C1	EKK.25 p-M6x20-C1	25	22.5	14.5	M6	20	14	14
243236-C1	EKK.25 p-M6x25-C1	25	22.5	14.5	M6	25	14	15
243241-C1	EKK.25 p-M6x30-C1	25	22.5	14.5	M6	30	14	16
243251-C1	EKK.25-p M8x20-C1	25	22.5	14.5	M8	20	14	15
243256-C1	EKK.25-p M8x25-C1	25	22.5	14.5	M8	25	14	16
243261-C1	EKK.25-p M8x30-C1	25	22.5	14.5	M8	30	14	17
243271-C1	EKK.25-p M8x40-C1	25	22.5	14.5	M8	40	14	19
243351-C1	EKK.31 p-M6x16-C1	31	27	18.5	M6	16	17	25
243352-C1	EKK.31 p-M6x20-C1	31	27	18.5	M6	20	17	26
243353-C1	EKK.31 p-M6x25-C1	31	27	18.5	M6	25	17	28
243354-C1	EKK.31 p-M6x30-C1	31	27	18.5	M6	30	17	30
243326-C1	EKK.31 p-M8x20-C1	31	27	18.5	M8	20	17	26
243331-C1	EKK.31 p-M8x25-C1	31	27	18.5	M8	25	17	28
243336-C1	EKK.31 p-M8x30-C1	31	27	18.5	M8	30	17	30
243346-C1	EKK.31 p-M8x40-C1	31	27	18.5	M8	40	17	32
243361-C1	EKK.31 p-M10x30-C1	31	27	18.5	M10	30	17	34
243371-C1	EKK.31 p-M10x40-C1	31	27	18.5	M10	40	17	40
243411-C1	EKK.35 p-M6x16-C1	35	27.5	20	M6	16	17	24
243413-C1	EKK.35 p-M6x20-C1	35	27.5	20	M6	20	17	25
243415-C1	EKK.35 p-M6x25-C1	35	27.5	20	M6	25	17	25
243417-C1	EKK.35 p-M6x30-C1	35	27.5	20	M6	30	17	26
243421-C1	EKK.35 p-M8x20-C1	35	27.5	20	M8	20	17	29
243423-C1	EKK.35 p-M8x25-C1	35	27.5	20	M8	25	17	30
243425-C1	EKK.35 p-M8x30-C1	35	27.5	20	M8	30	17	32
243427-C1	EKK.35 p-M8x40-C1	35	27.5	20	M8	40	17	35
243431-C1	EKK.35 p-M10x20-C1	35	27.5	20	M10	20	17	36
243437-C1	EKK.35 p-M10x40-C1	35	27.5	20	M10	40	17	38



5

Fixed and Revolving Handles