

Crank handle with revolving handle



Material

Glass-fibre reinforced polypropylene based (PP) technopolymer. Resistant to solvents, oils, greases and other chemical agents.

Colour

Black, matte finish.

Boss cap

Acetal resin based technopolymer (POM), black colour, matte finish; press-fit assembly, removable by pressing on the outer edge (ELESA original design).

Standard execution

Black-oxide steel boss, H9 hole with keyway in compliance with DIN 6885/1 tolerance P9.

Revolving handle type IEL+x SOFT in technopolymer coated with "soft-touch" thermoplastic elastomer (TPE), black colour, matte finish, not removable.

Indexing plunger

Glass-fibre reinforced polyamide based (PA) technopolymer handle, black colour, matte finish. Black-oxide steel plunger.

Glass-fibre reinforced polyamide based (PA) technopolymer handle, black colour, matte finish. Black-oxide steel plunger. When the indexing plunger is in the protruding position, the plunger itself seats in one of the especially drilled holes on the wall, thus preventing the crank handle to turn (fig. 1). When it is in the rest position, the plunger is retracted and does not seat in the holes. The crank handle can rotate freely and it is not blocked (fig. 2).

Special executions on request

Execution with locking device, see drawing.

EIK. crank handle can be supplied in other colours or customised with marks, logo or special graphics (tampoprinting).



Fig.1
Blocking position

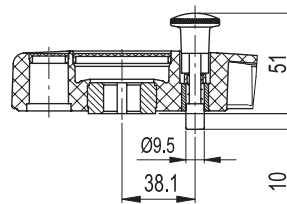
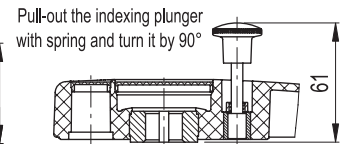
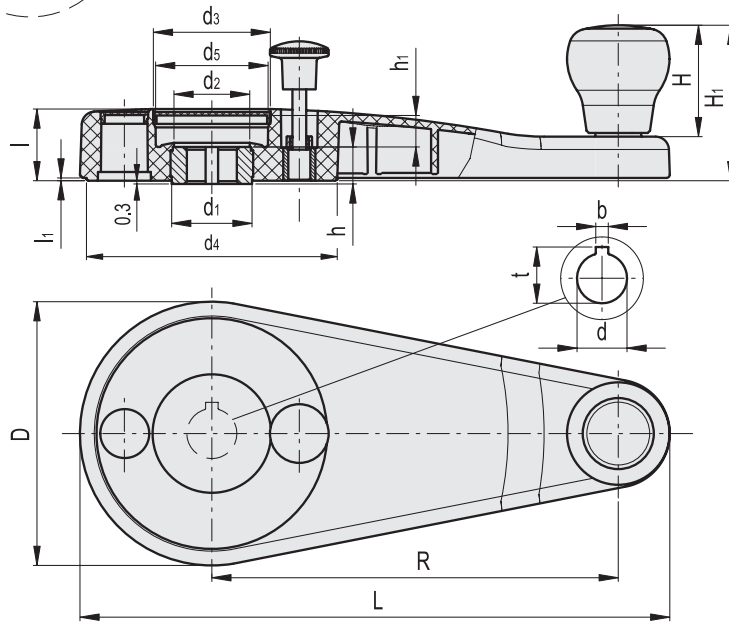
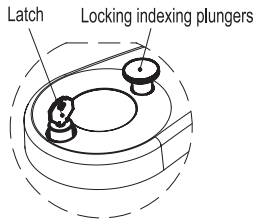


Fig.2
Operating position



Execution with locking device and latch



Code	Description	R	dH9	t+0.1	bP9	L	D	d1	d2	d3	d4	d5	l	l1	h	h1	H	H1	C# [Nm]	L# [J]	⚖️
208411-C1	EIK.210+IEL A-20-C1	210	20	22.8	6	290	115	35	33	50	109	48	31	1.5	15	14	47	68	180	14	425

For maximum applicable torque (C) and impact strength (L) see Technical data.