

Rubber buffers

Rubber and steel or stainless steel

STANDARD EXECUTIONS

- **DVA.1:** threaded studs and base plate in polished zinc-plated steel, vibration-damper body in natural rubber NR, black colour, hardness 40, 55, 70 Shore A ± 5 .
- **DVA.1-SST:** threaded studs and base plate in INOX AISI 304 stainless steel, vibration-damper body in natural rubber NR, black colour, hardness 55 Shore A ± 5 .

FEATURES AND APPLICATIONS

The rubber buffers have been designed to damp vibrations, shocks and noises produced by moving bodies or non-balanced vibrating masses of equipment and machines which can cause:

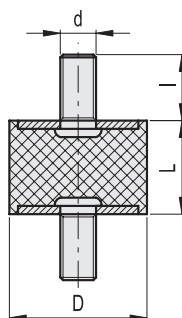
- malfunctioning and reduction of the machine lifespan and/or of the adjacent ones;
- damage to health;
- noise.

Load diagrams for each single code are available on request.

See Technical data and guidelines for the choice (on page -).

SPECIAL EXECUTIONS ON REQUEST

Natural rubber NR, hardness 40, 70 tolerance ± 5 Shore A for executions with AISI 304 stainless steel base.



* Complete the description with the desired hardness: 40, 55 or 70 tolerance ± 5 Shore A.

DVA.1

DVA.1 - 8 - 8 - M3 - 6 - 55
 D L d I Shore A

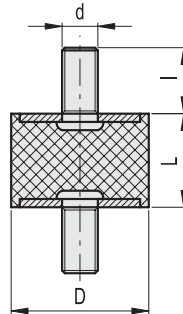
DVA.1

Description	D	L	d	I	⚖	Hardness 40 Shore A			Hardness 55 Shore A			Hardness 70 Shore A					
						Code	Max load [N]	Max deflection [mm]	Stiffness [N/mm]	Code	Max load [N]	Max deflection [mm]	Stiffness [N/mm]	Code	Max load [N]	Max deflection [mm]	Stiffness [N/mm]
DVA.1-6-7-M3-6-*	6	7	M3	3	1	413781	33	2	19	410901	42	2	24	416491	90	2	51
DVA.1-8-8-M3-6-*	8	8	M3	6	1	413801	50	2	25	411101	85	2	43	416501	150	2	75
DVA.1-8-13-M3-6-*	8	13	M3	6	2	413803	62	3	19	411003	94	3	29	416503	133	3	41
DVA.1-10-10-M4-10-*	10	10	M4	10	2	413811	75	3	30	411121	100	3	40	416511	200	3	80
DVA.1-10-15-M4-10-*	10	15	M4	10	3	413821	65	4	17	411131	100	4	26	416521	150	4	40
DVA.1-10-20-M4-10-*	10	20	M4	10	3	413823	59	5	12	411133	93	5	19	416523	96	5	19
DVA.1-15-8-M4-10-*	15	8	M4	10	5	413831	437	2	219	411141	537	2	269	416531	1325	2	663
DVA.1-15-10-M4-10-*	15	10	M4	10	6	413841	210	3	84	411151	325	3	130	416541	717	3	287
DVA.1-15-15-M4-10-*	15	15	M4	10	7	413851	155	4	41	411161	280	4	75	416551	513	4	137
DVA.1-15-20-M4-10-*	15	20	M4	10	8	413861	151	5	30	411171	234	5	47	416561	468	5	94
DVA.1-15-25-M4-10-*	15	25	M4	10	9	413863	133	6	21	411019	234	6	37	411173	498	6	80
DVA.1-20-8.5-M6-18-*	20	8.5	M6	6	13	413869	1410	2	671	411176	2092	2	996	416569	6150	2	2928
DVA.1-20-15-M6-18-*	20	15	M6	18	18	413871	322	4	86	411181	479	4	128	416571	1044	4	278
DVA.1-20-20-M6-18-*	20	20	M6	18	25	413881	220	5	44	411201	430	5	86	416581	995	5	199
DVA.1-20-25-M6-18-*	20	25	M6	18	20	413891	264	6	42	411211	433	6	69	416591	1010	6	162
DVA.1-20-30-M6-18-*	20	30	M6	18	23	413893	214	8	29	411213	417	8	56	416593	978	8	130
DVA.1-25-10-M6-18-*	25	10	M6	18	25	413899	4000	2	1600	411216	5990	2	2396	416599	10020	2	4008
DVA.1-25-15-M6-18-*	25	15	M6	18	28	413901	860	4	229	411221	1068	4	285	416601	2690	4	717
DVA.1-25-20-M6-18-*	25	20	M6	18	31	413911	391	5	78	411241	620	5	124	416611	1533	5	307
DVA.1-25-25-M6-18-*	25	25	M6	18	35	413921	441	6	71	411261	529	6	85	416621	1374	6	220
DVA.1-25-30-M6-18-*	25	30	M6	18	38	413931	432	8	58	411271	524	8	70	416631	1208	8	161

* Complete the description with the desired hardness:
40, 55 or 70 tolerance ±5 Shore A.

DVA.1 - 8 - 8 - M3 - 6 - 55
 D L d I Shore A

DVA.1



DVA.1

Description	D	L	d	I	⚖	Hardness 40 Shore A			Hardness 55 Shore A			Hardness 70 Shore A					
						Code	Max load [N]	Max deflection [mm]	Stiffness [N/mm]	Code	Max load [N]	Max deflection [mm]	Stiffness [N/mm]	Code	Max load [N]	Max deflection [mm]	Stiffness [N/mm]
DVA.1-30-15-M8-20-*	30	15	M8	20	45	413941	986	4	263	411281	2100	1.5	1400	416641	2700	1.5	1800
DVA.1-30-20-M8-20-*	30	20	M8	20	50	413951	770	5	154	411301	1067	5	213	416651	2260	5	452
DVA.1-30-25-M8-20-*	30	25	M8	20	54	413956	651	6	104	411311	1095	6	175	416656	1560	6	250
DVA.1-30-30-M8-20-*	30	30	M8	20	57	413961	500	8	67	411321	1055	8	141	416661	1960	8	261
DVA.1-30-40-M8-20-*	30	40	M8	20	65	413963	649	10	65	411323	932	10	93	416663	2000	10	200
DVA.1-40-20-M8-23-*	40	20	M8	23	80	413971	1800	5	360	411331	2430	5	486	416671	4450	5	890
DVA.1-40-20-M10-23-*	40	20	M10	23	79	413994	1628	5	326	411333	3160	5	632	416693	5550	5	1110
DVA.1-40-25-M10-23-*	40	25	M10	23	88	413995	1380	6	221	411336	2280	6.2	365	416695	4150	6	664
DVA.1-40-30-M8-23-*	40	30	M8	23	95	413981	1137	8	152	411341	1574	8	210	416681	3420	8	456
DVA.1-40-40-M8-23-*	40	40	M8	23	100	413991	1056	10	106	411361	1397	10	140	416691	3190	10	319
DVA.1-40-45-M10-23-*	40	45	M8	23	105	413997	1040	11	92	411351	1825	11.3	92	416697	2870	11	92.4
DVA.1-50-20-M10-28-*	50	20	M10	28	130	414001	3030	5	606	411381	4100	5	820	416701	9240	5	1848
DVA.1-50-25-M10-28-*	50	25	M10	28	150	414006	2355	6	377	411386	3640	6.3	582	416706	7550	6	1208
DVA.1-50-30-M10-28-*	50	30	M10	28	184	414011	2010	8	268	411401	3300	8	440	416711	5450	8	727
DVA.1-50-35-M10-28-*	50	35	M10	28	167	414016	1965	9	1965	411411	3050	9	3050	416716	5750	9	5750
DVA.1-50-40-M10-28-*	50	40	M10	28	170	414021	1477	10	148	411421	2130	10	213	416721	4940	10	494
DVA.1-50-45-M10-28-*	50	45	M10	28	180	414031	1368	11	122	411441	2046	11	182	416731	2580	11	229
DVA.1-50-50-M10-28-*	50	50	M10	28	195	414041	1500	13	120	411446	2188	13	175	416741	4750	13	380
DVA.1-60-30-M10-28-*	60	30	M10	28	211	414051	3020	8	403	411451	4170	8	556	416751	9130	8	1217
DVA.1-60-40-M10-28-*	60	40	M10	28	236	414061	2520	10	252	411456	3610	10	361	416761	6950	10	695
DVA.1-60-50-M10-28-*	60	50	M10	28	261	414063	2458	13	197	411457	3410	13	273	416763	6570	13	526
DVA.1-70-30-M10-28-*	70	30	M10	28	297	414070	6370	8	849	411460	8570	8	1143	416770	24010	8	3382
DVA.1-70-35-M10-28-*	70	35	M10	28	320	414072	5200	9	5200	411463	8660	9	8660	416769	14480	9	14480
DVA.1-70-45-M10-28-*	70	45	M10	28	380	414071	3810	11	339	411461	7130	11	634	416771	13210	11	1174
DVA.1-75-25-M12-37-*	75	25	M12	37	345	414081	11000	6	1760	411471	12970	6	2075	416781	25000	6	4000
DVA.1-75-40-M12-37-*	75	40	M12	37	410	414091	4910	10	491	411481	6970	10	697	416791	15380	10	1538
DVA.1-75-50-M12-37-*	75	50	M12	37	500	414096	4470	12	358	411486	6950	12	556	416786	12800	12	1024
DVA.1-75-55-M12-37-*	75	55	M12	37	515	414101	3470	14	252	411501	7510	14	546	416801	11240	14	817
DVA.1-80-30-M14-37-*	80	30	M14	37	600	414105	9690	5	1938	411511	15510	5	3102	416805	22930	4	5097
DVA.1-80-40-M14-37-*	80	40	M14	37	650	414106	7300	10	730	411516	10510	10	1051	416807	19690	10	1969
DVA.1-100-40-M16-41-*	100	40	M16	41	765	414111	13990	10	1399	411521	20000	10	2000	416811	29000	10	2900
DVA.1-100-55-M16-41-*	100	55	M16	41	905	414121	7320	14	532	411541	13080	14	951	416821	24260	14	1764
DVA.1-100-60-M16-41-*	100	60	M16	41	950	414131	7000	15	467	411561	11290	15	753	416831	28500	15	1900
DVA.1-100-75-M16-41-*	100	75	M16	41	1090	414141	7790	19	415	411581	9640	19	514	416841	22350	19	1192
DVA.1-125-55-M16-41-*	125	55	M16	41	1320	414161	17270	14	1256	411601	19260	14	1401	416901	23610	8	3008
DVA.1-125-75-M16-41-*	125	75	M16	41	1625	414163	12235	19	653	411603	19440	19	1037	416903	21789	19	1162

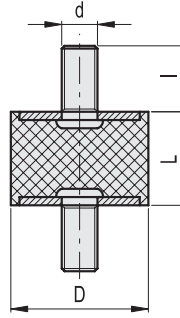


Vibration mounts 21



Vibration mounts 21

DVA.1-SST



DVA.1 - 8 - 8 - SST - M3 - 6 - 55
 D L Stainless steel d I Shore A

DVA.1-SST

STAINLESS STEEL

Description	D	L	d	I	⚖	Hardness 40 Shore A			Hardness 55 Shore A			Hardness 70 Shore A					
						Code	Max load [N]	Max deflection [mm]	Stiffness [N/mm]	Code	Max load [N]	Max deflection [mm]	Stiffness [N/mm]	Code	Max load [N]	Max deflection [mm]	Stiffness [N/mm]
DVA.1-6-7-SST-M3-6-55	6	7	M3	6	1		33	2	19	409901	42	2	24		90	2	51
DVA.1-8-8-SST-M3-6-55	8	8	M3	6	1		50	2	25	410001	85	2	43		150	2	75
DVA.1-8-13-SST-M3-6-55	8	13	M3	6	2		62	3	19	410003	94	3	29		133	3	41
DVA.1-10-10-SST-M4-10-55	10	10	M4	10	2		75	3	30	410005	100	3	40		200	3	80
DVA.1-10-15-SST-M4-10-55	10	15	M4	10	3		65	4	17	410007	100	4	26		150	4	40
DVA.1-10-20-SST-M4-10-55	10	20	M4	10	3		59	5	12	410009	93	5	19		96	5	19
DVA.1-15-8-SST-M4-10-55	15	8	M4	10	5		437	2	219	410011	537	2	269		1325	2	663
DVA.1-15-10-SST-M4-10-55	15	10	M4	10	6		210	3	84	410013	325	3	130		717	3	287
DVA.1-15-15-SST-M4-10-55	15	15	M4	10	7		155	4	41	410015	280	4	75		513	4	137
DVA.1-15-20-SST-M4-10-55	15	20	M4	10	8		151	5	30	410017	234	5	47		468	5	94
DVA.1-15-25-SST-M4-10-55	15	25	M4	10	9		133	6	21	410019	234	6	37		498	6	80
DVA.1-20-8.5-SST-M6-18-55	20	8.5	M6	18	13		1410	2	671	410020	2092	2	996		6150	2	2928
DVA.1-20-15-SST-M6-18-55	20	15	M6	18	18		322	4	86	410021	479	4	128		1044	4	278
DVA.1-20-20-SST-M6-18-55	20	20	M6	18	25		220	5	44	410023	430	5	86		995	5	199
DVA.1-20-25-SST-M6-18-55	20	25	M6	18	20		264	6	42	410025	433	6	69		1010	6	162
DVA.1-20-30-SST-M6-18-55	20	30	M6	18	23		214	8	29	410027	417	8	56		978	8	130
DVA.1-25-10-SST-M6-18-55	25	10	M6	18	25		4000	2	1600	410030	5990	2.5	2396		10020	2	4008
DVA.1-25-15-SST-M6-18-55	25	15	M6	18	28		860	4	229	410031	1068	4	285		2690	4	717
DVA.1-25-20-SST-M6-18-55	25	20	M6	18	31		391	5	78	410033	620	5	124		1533	5	307
DVA.1-25-25-SST-M6-18-55	25	25	M6	18	35		441	6	71	410035	529	6	85		1374	6	220
DVA.1-25-30-SST-M6-18-55	25	30	M6	18	38		432	8	58	410037	524	8	70		1208	8	161
DVA.1-30-15-SST-M8-20-55	30	15	M8	20	45		986	4	263	410041	2080	4	555		3300	4	880
DVA.1-30-20-SST-M8-20-55	30	20	M8	20	50		770	5	154	410043	1067	5	213		2260	5	452
DVA.1-30-25-SST-M8-20-55	30	25	M8	20	54		651	6	104	410044	1095	6	175		1560	6	250
DVA.1-30-30-SST-M8-20-55	30	30	M8	20	57		500	8	67	410045	1055	8	141		1960	8	261
DVA.1-30-40-SST-M8-20-55	30	40	M8	20	65		649	10	65	410047	932	10	93		2000	10	200
DVA.1-40-20-SST-M8-23-55	40	20	M8	23	80	ON REQUEST	1800	5	360	410051	2430	5	486	ON REQUEST	4450	5	890
DVA.1-40-20-SST-M10-23-55	40	20	M10	23	79		1628	5	326	410050	3160	5	632		5550	5	1110
DVA.1-40-25-SST-M10-23-55	40	20	M10	23	88		1380	6	221	410052	2280	6.2	365		4150	6	664
DVA.1-40-30-SST-M8-23-55	40	30	M8	23	95		1137	8	152	410053	1574	8	210		3420	8	456
DVA.1-40-40-SST-M8-23-55	40	40	M8	23	100		1056	10	106	410055	1397	10	140		3190	10	319
DVA.1-40-45-SST-M10-23-55	40	45	M10	23	105		1040	11	92	410057	1825	11.3	162		2870	11	92.4
DVA.1-50-20-SST-M10-28-55	50	20	M10	28	130		3030	5	606	410061	4100	5	820		9240	5	1848
DVA.1-50-25-SST-M10-28-55	50	24	M10	28	150		2355	6	377	410062	3640	6.2	582		7550	6	1208
DVA.1-50-30-SST-M10-28-55	50	30	M10	28	184		2010	8	268	410063	3300	8	440		5450	8	727
DVA.1-50-35-SST-M10-28-55	50	35	M10	28	167		1965	9	1965	410064	3050	8.7	348.5		5750	9	5750
DVA.1-50-40-SST-M10-28-55	50	40	M10	28	170		1477	10	148	410065	2130	10	213		4940	10	494
DVA.1-50-45-SST-M10-28-55	50	45	M10	28	180		1368	11	122	410067	2046	11	182		2580	11	229
DVA.1-50-50-SST-M10-28-55	50	50	M10	28	195		1500	13	120	410069	2188	13	175		4750	13	380
DVA.1-60-30-SST-M10-28-55	60	30	M10	28	211		3020	8	403	410071	4170	8	556		9130	8	1217
DVA.1-60-40-SST-M10-28-55	60	40	M10	28	236		2520	10	252	410073	3610	10	361		6950	10	695
DVA.1-60-50-SST-M10-28-55	60	50	M10	28	261		2458	13	197	410075	3410	13	273		6570	13	526
DVA.1-70-30-SST-M10-28-55	70	30	M10	28	297		6370	8	849	410076	8570	8	1143		24010	8	3382
DVA.1-70-35-SST-M10-28-55	70	35	M10	28	320		5200	9	5200	410078	8570	9	990		14480	9	14480
DVA.1-70-45-SST-M10-28-55	70	45	M10	28	380		3810	11	339	410077	7130	11	634		13210	11	1174
DVA.1-75-25-SST-M12-37-55	75	25	M12	37	345		11000	6	1760	410081	12970	6	2075		25000	6	4000
DVA.1-75-40-SST-M12-37-55	75	40	M12	37	410		4910	10	491	410083	6970	10	697		15380	10	1538
DVA.1-75-50-SST-M12-37-55	75	50	M12	37	500		4470	12	358	410084	6950	12	556		12800	12	1024
DVA.1-75-55-SST-M12-37-55	75	55	M12	37	515		3470	14	252	410085	7510	14	546		11240	14	817
DVA.1-80-30-SST-M14-37-55	80	30	M14	37	600		9690	5	1938	410087	15510	5	3102		22930	4	5097
DVA.1-80-40-SST-M14-37-55	80	40	M14	37	650		7300	10	730	410088	10510	10	1051		19690	10	1969
DVA.1-100-40-SST-M16-41-55	100	40	M16	41	765		13990	10	1399	410091	20000	10	2000		29000	10	2900
DVA.1-100-55-SST-M16-41-55	100	55	M16	41	905		7320	14	532	410093	13080	14	951		24260	14	1764
DVA.1-100-60-SST-M16-41-55	100	60	M16	41	950		7000	15	467	410095	11290	15	753		28500	15	1900
DVA.1-100-75-SST-M16-41-55	100	75	M16	41	1090		7790	19	415	410097	9640	19	514		22350	19	1192
DVA.1-125-55-SST-M16-41-55	125	55	M16	41	1320		17270	14	1256	410098	19260	14	1401		23610	8	3008
DVA.1-125-75-SST-M16-41-55	125	75	M16	41	1600		12235	19	653	410099	19440	19	1037		21789	19	1162