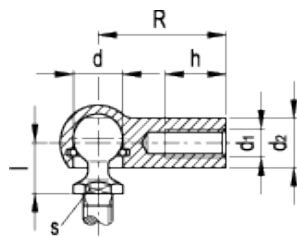
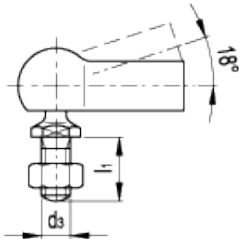


DIN 71802

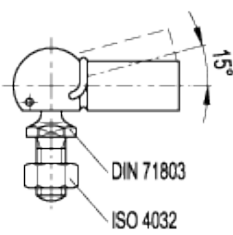
Angled ball joints



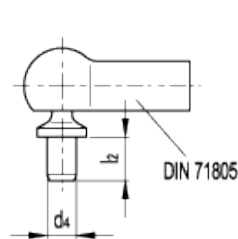
DIN 71802-C



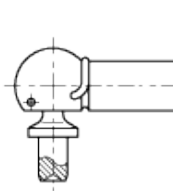
DIN 71802-CS



DIN 71802-B



DIN 71802-BS



technical informations

Material

Zinc-plated steel.

Ball shank

Type DIN 71803, threaded.

- Execution C: with threaded ball shank, without safety catch.
- Execution CS: with threaded ball shank, with safety catch.
- Execution B: with rivet ball shank, without safety catch.
- Execution BS: with rivet ball shank, with safety catch.

Ball

Hardened steel, lubricated.

Assembly

Standard threaded hole d1.

DIN 71802 angled ball joints consists of a ball socket DIN 71805 and a ball shank DIN 71803.

Other standard execution available

- Execution L: left-hand threaded hole (M5-M12).
- Execution F: fine threaded hole (M14).
- Execution FL: left-hand fine threaded hole (M14).

Rotating angle

- For execution CS: 15°.
- For execution C: 18°.

Accessories on request

Ball joints with reduced resistance, ball socket with play and [GN 710](#) dust cap to protect the ball point.

Assembly instructions

The ball is assembled by pushing it through the circlip which act as a retainer. In case the retaining force between the ball and the socket is not sufficient, it can be increased by adding a safety catch which can be easily fitted.

Standard Elements	Main dimensions											Min. separating force [N]	Weig g
	d _{H9/h9}	d ₁	d ₂	d ₃	d _{4 h11}	l	l ₁	l ₂	R	h _{min}	s		
DIN 71802-8-M5-C	8	M5	8	M5	-	9	10	-	22	10.5	7	30	14
DIN 71802-8-M5L-C	8	M5L	8	M5	-	9	10	-	22	10.5	7	30	15
DIN 71802-10-M6-C	10	M6	10	M6	-	11	12.5	-	25	11.5	8	40	25
DIN 71802-10-M6L-C	10	M6L	10	M6	-	11	12.5	-	25	11.5	8	40	25
DIN 71802-13-M8-C	13	M8	13	M8	-	13	16.5	-	30	14	11	60	52
DIN 71802-13-M8L-C	13	M8L	13	M8	-	13	16.5	-	30	14	11	60	50
DIN 71802-16-M10-C	16	M10	16	M10	-	16	20	-	35	15.5	13	80	95
DIN 71802-16-M10L-C	16	M10L	16	M10	-	16	20	-	35	15.5	13	80	95
DIN 71802-16-M12-C	16	M12	16	M12	-	16	20	-	35	15.5	13	80	100
DIN 71802-16-M12L-C	16	M12L	16	M12	-	16	20	-	35	15.5	13	80	100
DIN 71802-19-M14F-C	19	M14F=M14x1.5	22	M14x1.5	-	20	28	-	45	21.5	16	100	217
DIN 71802-19-M14FL-C	19	M14FL=M14x1.5L	22	M14x1.5	-	20	28	-	45	21.5	16	100	220
DIN 71802-8-M5-CS	8	M5	8	M5	-	9	10	-	22	10.5	7	30	14
DIN 71802-8-M5L-CS	8	M5L	8	M5	-	9	10	-	22	10.5	7	30	15
DIN 71802-10-M6-CS	10	M6	10	M6	-	11	12.5	-	25	11.5	8	40	25
DIN 71802-10-M6L-CS	10	M6L	10	M6	-	11	12.5	-	25	11.5	8	40	26
DIN 71802-13-M8-CS	13	M8	13	M8	-	13	16.5	-	30	14	11	60	50
DIN 71802-13-M8L-CS	13	M8L	13	M8	-	13	16.5	-	30	14	11	60	50
DIN 71802-16-M10-CS	16	M10	16	M10	-	16	20	-	35	15.5	13	80	95
DIN 71802-16-M10L-CS	16	M10L	16	M10	-	16	20	-	35	15.5	13	80	100
DIN 71802-16-M12-CS	16	M12	16	M12	-	16	20	-	35	15.5	13	80	101
DIN 71802-16-M12L-CS	16	M12L	16	M12	-	16	20	-	35	15.5	13	80	102
DIN 71802-19-M14F-CS	19	M14F=M14x1.5	22	M14x1.5	-	20	28	-	45	21.5	16	100	220
DIN 71802-19-M14FL-CS	19	M14FL=M14x1.5L	22	M14x1.5	-	20	28	-	45	21.5	16	100	220
DIN 71802-8-M5-4-B	8	M5	8	-	5	9	-	4	22	10.5	7	30	13
DIN 71802-8-M5L-4-B	8	M5L	8	-	5	9	-	4	22	10.5	7	30	13

DIN 71802-8-M5-7.5-B	8	M5	8	-	5	9	-	7.5	22	10.5	7	30	13
DIN 71802-8-M5L-7.5-B	8	M5L	8	-	5	9	-	7.5	22	10.5	7	30	13
DIN 71802-10-M6-4.5-B	10	M6	10	-	6	11	-	4.5	25	11.5	8	40	22
DIN 71802-10-M6L-4.5-B	10	M6L	10	-	6	11	-	4.5	25	11.5	8	40	22
DIN 71802-10-M6-8-B	10	M6	10	-	6	11	-	8	25	11.5	8	40	23
DIN 71802-10-M6L-8-B	10	M6L	10	-	6	11	-	8	25	11.5	8	40	23
DIN 71802-13-M8-5-B	13	M8	13	-	8	13	-	5	30	14	11	60	40
DIN 71802-13-M8L-5-B	13	M8L	13	-	8	13	-	5	30	14	11	60	40
DIN 71802-13-M8-10-B	13	M8	13	-	8	13	-	10	30	14	11	60	44
DIN 71802-13-M8L-10-B	13	M8L	13	-	8	13	-	10	30	14	11	60	44
DIN 71802-16-M10-6-B	16	M10	16	-	10	16	-	6	35	15.5	13	80	80
DIN 71802-16-M10L-6-B	16	M10L	16	-	10	16	-	6	35	15.5	13	80	80
DIN 71802-16-M10-13-B	16	M10	16	-	10	16	-	13	35	15.5	13	80	85
DIN 71802-16-M10L-13-B	16	M10L	16	-	10	16	-	13	35	15.5	13	80	85
DIN 71802-16-M12-6-B	16	M12	16	-	12	16	-	6	35	15.5	13	80	80
DIN 71802-16-M12L-6-B	16	M12L	16	-	12	16	-	6	35	15.5	13	80	80
DIN 71802-16-M12-13-B	16	M12	16	-	12	16	-	13	35	15.5	13	80	85
DIN 71802-16-M12L-13-B	16	M12L	16	-	12	16	-	13	35	15.5	13	80	85
DIN 71802-19-M14F-12-B	19	M14F=M14x1.5	22	-	14	20	-	12	45	21.5	16	100	181
DIN 71802-19-M14FL-12-B	19	M14FL=M14x1.5L	22	-	14	20	-	12	45	21.5	16	100	181
DIN 71802-19-M14F-18-B	19	M14F=M14x1.5	22	-	14	20	-	18	45	21.5	16	100	190
DIN 71802-19-M14FL-18-B	19	M14FL=M14x1.5L	22	-	14	20	-	18	45	21.5	16	100	190
DIN 71802-8-M5-4-BS	8	M5	8	-	5	9	-	4	22	10.5	7	30	13
DIN 71802-8-M5L-4-BS	8	M5L	8	-	5	9	-	4	22	10.5	7	30	13
DIN 71802-8-M5-7.5-BS	8	M5	8	-	5	9	-	7.5	22	10.5	7	30	13
DIN 71802-8-M5L-7.5-BS	8	M5L	8	-	5	9	-	7.5	22	10.5	7	30	13
DIN 71802-10-M6-4.5-BS	10	M6	10	-	6	11	-	4.5	25	11.5	8	40	22
DIN 71802-10-M6L-4.5-BS	10	M6L	10	-	6	11	-	4.5	25	11.5	8	40	22
DIN 71802-10-M6-8-BS	10	M6	10	-	6	11	-	8	25	11.5	8	40	23
DIN 71802-10-M6L-8-BS	10	M6L	10	-	6	11	-	8	25	11.5	8	40	23
DIN 71802-13-M8-5-BS	13	M8	13	-	8	13	-	5	30	14	11	60	40
DIN 71802-13-M8L-5-BS	13	M8L	13	-	8	13	-	5	30	14	11	60	40
DIN 71802-13-M8-10-BS	13	M8	13	-	8	13	-	10	30	14	11	60	44
DIN 71802-13-M8L-10-BS	13	M8L	13	-	8	13	-	10	30	14	11	60	44
DIN 71802-16-M10-6-BS	16	M10	16	-	10	16	-	6	35	15.5	13	80	80
DIN 71802-16-M10L-6-BS	16	M10L	16	-	10	16	-	6	35	15.5	13	80	80
DIN 71802-16-M10-13-BS	16	M10	16	-	10	16	-	13	35	15.5	13	80	85
DIN 71802-16-M10L-13-BS	16	M10L	16	-	10	16	-	13	35	15.5	13	80	85
DIN 71802-16-M12-6-BS	16	M12	16	-	12	16	-	6	35	15.5	13	80	80
DIN 71802-16-M12L-6-BS	16	M12L	16	-	12	16	-	6	35	15.5	13	80	80
DIN 71802-16-M12-13-BS	16	M12	16	-	12	16	-	13	35	15.5	13	80	85
DIN 71802-16-M12L-13-BS	16	M12L	16	-	12	16	-	13	35	15.5	13	80	85
DIN 71802-19-M14F-12-BS	19	M14F=M14x1.5	22	-	14	20	-	12	45	21.5	16	100	181
DIN 71802-19-M14FL-12-BS	19	M14FL=M14x1.5L	22	-	14	20	-	12	45	21.5	16	100	181

DIN 71802-19-M14F-18-BS	19	M14F=M14x1.5	22	-	14	20	-	18	45	21.5	16	100	190
DIN 71802-19-M14FL-18-BS	19	M14FL=M14x1.5L	22	-	14	20	-	18	45	21.5	16	100	190



STANDARD MACHINE ELEMENTS WORLDWIDE