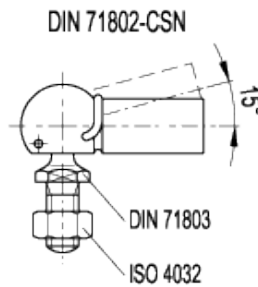
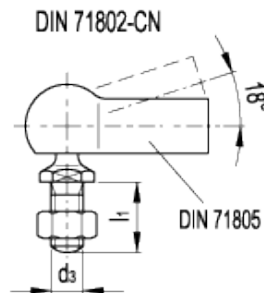
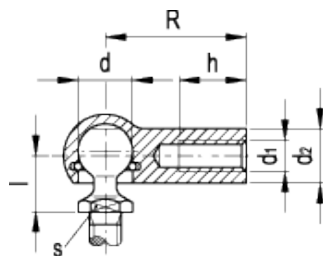


DIN 71802-NI

Angled ball joints



INOX
Stainless Steel



technical informations

Material

Stainless steel.

Ball shank

Type DIN 71803, threaded.

- Execution CN: without safety catch.
- Execution CSN: with safety catch.

Ball

Stainless steel, not hardened, lubricated.

Assembly

Standard threaded hole d1.

DIN 71802 angled ball joints consists of a ball socket DIN 71805 and a ball shank DIN 71803.

Other standard execution available

- Execution L: left-hand threaded hole (M5÷M12).
- Execution F: fine threaded hole (M14).
- Execution FL: left-hand fine threaded hole (M14).

Rotating angle

- For execution CSN: 15°.
- For execution CN: 18°.

Accessories on request

Ball joints with reduced resistance, ball socket with play and [GN 710](#) dust cap to protect the ball point.

Assembly instructions

The ball is assembled by pushing it through the circlip which act as a retainer. In case the retaining force between the ball and the socket is not sufficient, it can be increased by adding a safety catch which can be easily fitted.

Standard Elements	Main dimensions									Min. separating force [N]	Weight g
	Description	d H9/h9	d ₁	d ₂	d ₃	l	l ₁	R	h _{min}		
DIN 71802-8-M5-CN	8	M5	8	M5	9	10	22	10.5	7	30	15
DIN 71802-8-M5-CSN	8	M5	8	M5	9	10	22	10.5	7	30	15
DIN 71802-8-M5L-CN	8	M5L	8	M5	9	10	22	10.5	7	30	16
DIN 71802-8-M5L-CSN	8	M5L	8	M5	9	10	22	10.5	7	30	16
DIN 71802-10-M6-CN	10	M6	10	M6	11	12.5	25	11.5	8	40	27
DIN 71802-10-M6-CSN	10	M6	10	M6	11	12.5	25	11.5	8	40	27
DIN 71802-10-M6L-CN	10	M6L	10	M6	11	12.5	25	11.5	8	40	27
DIN 71802-10-M6L-CSN	10	M6L	10	M6	11	12.5	25	11.5	8	40	28
DIN 71802-13-M8-CN	13	M8	13	M8	13	16.5	30	14	11	60	55
DIN 71802-13-M8-CSN	13	M8	13	M8	13	16.5	30	14	11	60	53
DIN 71802-13-M8L-CN	13	M8L	13	M8	13	16.5	30	14	11	60	53
DIN 71802-13-M8L-CSN	13	M8L	13	M8	13	16.5	30	14	11	60	53
DIN 71802-16-M10-CN	16	M10	16	M10	16	20	35	15.5	13	80	100
DIN 71802-16-M10-CSN	16	M10	16	M10	16	20	35	15.5	13	80	100
DIN 71802-16-M10L-CN	16	M10L	16	M10	16	20	35	15.5	13	80	100
DIN 71802-16-M10L-CSN	16	M10L	16	M10	16	20	35	15.5	13	80	105
DIN 71802-16-M12-CN	16	M12	16	M12	16	20	35	15.5	13	80	105
DIN 71802-16-M12-CSN	16	M12	16	M12	16	20	35	15.5	13	80	106
DIN 71802-16-M12L-CN	16	M12L	16	M12	16	20	35	15.5	13	80	105
DIN 71802-16-M12L-CSN	16	M12L	16	M12	16	20	35	15.5	13	80	107
DIN 71802-19-M14F-CN	19	M14F=M14x1.5	22	M14x1.5	20	28	45	21.5	16	100	227
DIN 71802-19-M14F-CSN	19	M14F=M14x1.5	22	M14x1.5	20	28	45	21.5	16	100	230
DIN 71802-19-M14FL-CN	19	M14FL=M14x1.5L	22	M14x1.5	20	28	45	21.5	16	100	230
DIN 71802-19-M14FL-CSN	19	M14FL=M14x1.5L	22	M14x1.5	20	28	45	21.5	16	100	230



STANDARD MACHINE ELEMENTS WORLDWIDE