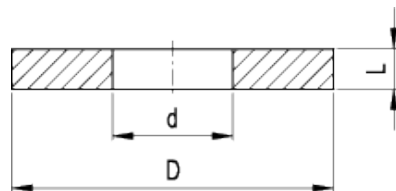


DIN 6340

Washers



technical informations

Material

Black-oxide (not deburred) quenched and tempered steel. Hardness (350 + 80) HV 30.

Features and applications

GN 6340 washers are mainly used for elongated holes in connection with [DIN 6330](#) hexagon nuts.

| Standard Elements | Main dimensions | | | | Weight |
|-------------------|-----------------|----|----|-----------|--------|
| | d | D | L | for screw | |
| Description | | | | | g |
| DIN 6340-6.4 | 6.4 | 17 | 3 | M6 | 5 |
| DIN 6340-8.4 | 8.4 | 23 | 4 | M8 | 11 |
| DIN 6340-10.5 | 10.5 | 28 | 4 | M10 | 16 |
| DIN 6340-13 | 13 | 35 | 5 | M12 | 30 |
| DIN 6340-15 | 15 | 40 | 5 | M14 | 42 |
| DIN 6340-17 | 17 | 45 | 6 | M16 | 60 |
| DIN 6340-21 | 21 | 50 | 6 | M20 | 75 |
| DIN 6340-25 | 25 | 60 | 8 | M24 | 135 |
| DIN 6340-31 | 31 | 68 | 10 | M30 | 230 |



STANDARD MACHINE ELEMENTS WORLDWIDE