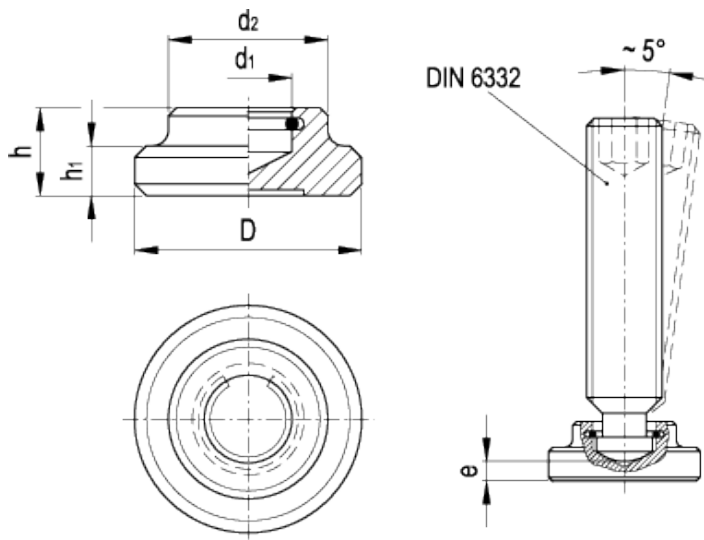


DIN 6311

Thrust pads with retaining ring



technical informations

Material

Turned and hardened steel.

Retaining ring

Steel spring wire.

Features and applications

DIN 6311 thrust pads are used to transmit clamping forces by means of grub screws type [DIN 6332](#).

The retaining ring creates a simple and fast coupling between the threaded stud and the thrust pad.

They can be adapted on irregular or non-parallel surfaces and prevent the rotating movement of the screw from being exerted directly on the piece to be locked.

Assembly instructions



Standard Elements	Main dimensions							Weight
Description	D	h	$d_{1\ H12}$	d_2	h_1	e_{\sim}	*	g
DIN 6311-12-S	12	7	4.6	10	2.5	2.2	M6	4
DIN 6311-16-S	16	9	6.1	12	4	3	M8	9
DIN 6311-20-S	20	11	8.1	15	5	3.6	M10	17
DIN 6311-25-S	25	13	8.1	18	6	4.5	M12	33
DIN 6311-32-S	32	15	12.1	22	7	5.3	M16	59
DIN 6311-40-S	40	16	15.6	28	9	5.6	M20	105

* Threading of the corresponding grub-screw DIN 6332



ELESA and GANTER models all rights reserved in accordance with the law. Always mention the source when reproducing our drawings.

STANDARD MACHINE ELEMENTS WORLDWIDE