

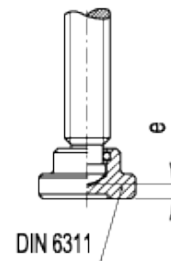
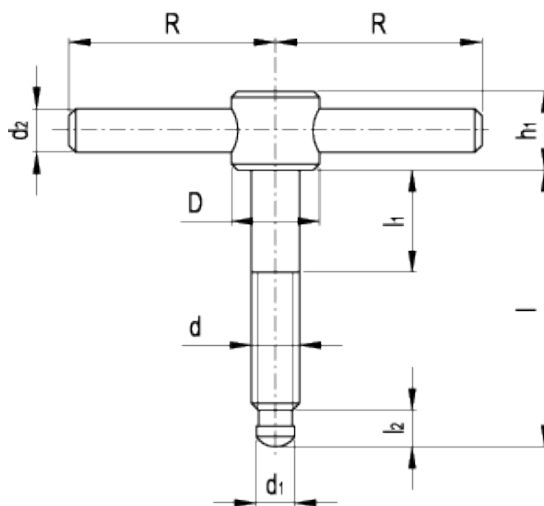
DIN 6304

Tommy screws



DIN 6304-E

DIN 6304-F



technical informations

Material

Black-oxide steel body and hardened steel thrust point.

- Execution E: without thrust pad.
- Execution F: with [DIN 6311](#) thrust pad.

Features and applications

The thrust point of DIN 6304 tommy screws is designed to be used with or without the thrust pad for clamping. The snap ring is a simple and quick method to connect the thrust pad to the tommy screw.

Standard Elements	Main dimensions										Weight	
	Description	D	R	h ₁	d	d _{1 h11}	d ₂	l	l ₁	l ₂		e
DIN 6304-M6-40-E	12	25	10	M6	4.5	5	40	10	5.4	-	-	22
DIN 6304-M6-40-F	12	25	10	M6	4.5	5	40	10	5.4	2.2	-	26
DIN 6304-M6-50-E	12	25	10	M6	4.5	5	50	10	5.4	-	-	23
DIN 6304-M6-50-F	12	25	10	M6	4.5	5	50	10	5.4	2.2	-	27
DIN 6304-M8-50-E	14	30	12	M8	6	6	50	15	6.8	-	-	40
DIN 6304-M8-50-F	14	30	12	M8	6	6	50	15	6.8	3	-	49
DIN 6304-M8-60-E	14	30	12	M8	6	6	60	15	6.8	-	-	43
DIN 6304-M8-60-F	14	30	12	M8	6	6	60	15	6.8	3	-	52
DIN 6304-M10-60-E	18	40	14	M10	8	8	60	20	8.2	-	-	83
DIN 6304-M10-60-F	18	40	14	M10	8	8	60	20	8.2	3.6	-	100
DIN 6304-M10-70-E	18	40	14	M10	8	8	70	20	8.2	-	-	88
DIN 6304-M10-70-F	18	40	14	M10	8	8	70	20	8.2	3.6	-	105
DIN 6304-M12-70-E	20	50	18	M12	8	10	70	20	8.6	-	-	138
DIN 6304-M12-70-F	20	50	18	M12	8	10	70	20	8.6	4.5	-	171
DIN 6304-M12-80-E	20	50	18	M12	8	10	80	20	8.6	-	-	146
DIN 6304-M12-80-F	20	50	18	M12	8	10	80	20	8.6	4.5	-	179
DIN 6304-M16-75-E	24	60	20	M16	12	12	75	20	10.6	-	-	252
DIN 6304-M16-75-F	24	60	20	M16	12	12	75	20	10.6	5.3	-	311
DIN 6304-M16-90-E	24	60	20	M16	12	12	90	20	10.6	-	-	265
DIN 6304-M16-90-F	24	60	20	M16	12	12	90	20	10.6	5.3	-	324
DIN 6304-M16-110-E	24	60	20	M16	12	12	110	20	10.6	-	-	292
DIN 6304-M16-110-F	24	60	20	M16	12	12	110	20	10.6	5.3	-	354
DIN 6304-M20-75-E	30	70	28	M20	15.5	16	75	20	12.4	-	-	470
DIN 6304-M20-75-F	30	70	28	M20	15.5	16	75	20	12.4	5.6	-	475
DIN 6304-M20-90-E	30	70	28	M20	15.5	16	90	20	12.4	-	-	497
DIN 6304-M20-90-F	30	70	28	M20	15.5	16	90	20	12.4	5.6	-	602
DIN 6304-M20-110-E	30	70	28	M20	15.5	16	110	20	12.4	-	-	439
DIN 6304-M20-110-F	30	70	28	M20	15.5	16	110	20	12.4	5.6	-	644



STANDARD MACHINE ELEMENTS WORLDWIDE