

## Knurled nuts

Steel / Stainless Steel

### SPECIFICATION

#### Types

- Type **A**: without dowel hole
- Type **B**: with dowel hole

#### Version in Steel

- Tensile strength class 5
- blackened

#### Version in Stainless Steel AISI 303 NI

matte shot-blasted

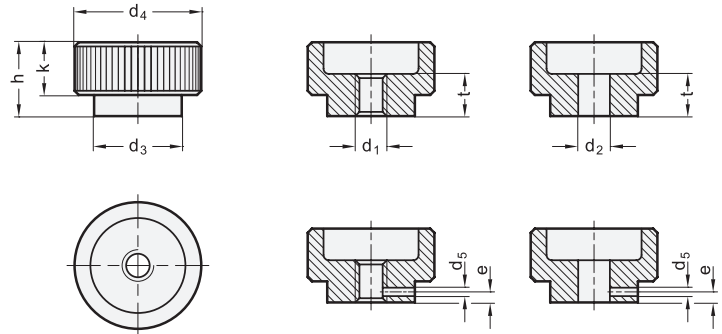
### INFORMATION

The dowel bore  $d_5$  in the knurled nut DIN 6303 is designed for the use of clamping or notch pins.

Knurled nuts DIN 6303 with H7 bore and the size M12 are not provided on the official standard sheet. In addition, the knurling divisions are larger than the DIN standard for better grip.

### TECHNICAL INFORMATION

- ISO-Fundamental Tolerances (see page A21)
- Stainless Steel characteristics (see page A26)



\* Complete with type index of the knurled nut (A or B)

**A** without dowel hole    **B** with dowel hole

### DIN 6303

Description	d1	d2 H7	d3	d4	d5 H11	e	h	k	l	⚖
DIN 6303-M5-*	M5	-	14	20	1.5	2.5	12	8	7	15
DIN 6303-B5-*	-	B 5	14	20	1.5	2.5	12	8	7	18
DIN 6303-M6-*	M6	-	16	24	1.5	2.5	14	10	8	27
DIN 6303-B6-*	-	B 6	16	24	1.5	2.5	14	10	8	29
DIN 6303-M8-*	M8	-	20	30	2	3	17	12	10	47
DIN 6303-B8-*	-	B 8	20	30	2	3	17	12	10	45
DIN 6303-M10-*	M10	-	28	36	3	4	20	14	12	47
DIN 6303-B10-*	-	B 10	28	36	3	4	20	14	12	45
DIN 6303-M12-*	M12	-	32	40	4	4	24	16	16	85
DIN 6303-B12-*	-	B 12	32	40	4	4	24	16	16	89

### DIN 6303-NI

STAINLESS STEEL

Description	d1	d3	d4	d5 H11	e	h	k	l	⚖
DIN 6303-M5-A-NI	M5	14	20	-	-	12	8	7	15
DIN 6303-M6-A-NI	M6	16	24	-	-	14	10	8	27
DIN 6303-M8-A-NI	M8	20	30	-	-	17	12	10	45
DIN 6303-M10-A-NI	M10	28	36	-	-	20	14	12	85
DIN 6303-M12-A-NI	M12	32	40	-	-	24	16	16	132
DIN 6303-M5-B-NI	M5	14	20	1.5	2.5	12	8	7	15
DIN 6303-M6-B-NI	M6	16	24	1.5	2.5	14	10	8	27
DIN 6303-M8-B-NI	M8	20	30	2	3	17	12	10	47
DIN 6303-M10-B-NI	M10	28	36	3	4	20	14	12	85
DIN 6303-M12-B-NI	M12	32	40	4	4	24	16	16	132