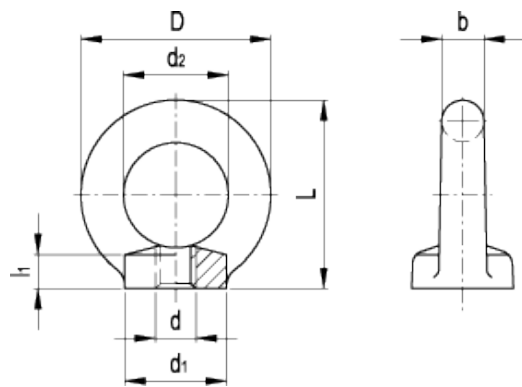


DIN 582 DIN 582-NI

Lifting female eye bolts



technical informations

Material

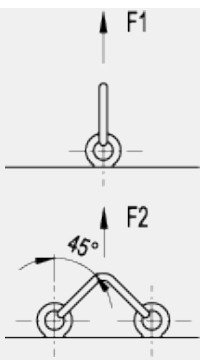
- Version ST: forged steel annealed body, zinc-plated blue passivated, machined contact face.
- Version NI: forged AISI 304 stainless steel annealed body, machined contact face, passivated.

Features and applications

When installing DIN 582 female lifting eye bolts it is of utmost importance to ensure that the face is in firm contact with the mating face.

The values indicated in the here-under table are only applicable when the thread length of the bolt is $0.8 \times d$ and when the tensile strength do not exceed 500 N/mm^2 .

Do not apply load across the face of the ring.



Standard Elements		Main dimensions							F ₁	F ₂	Weight	
Description	Description	d	D	L	b	d ₁	d ₂	l ₁	[N]	[N]	g	g#
DIN 582-M8-ST	DIN 582-M8-NI	M8	36	36	8	20	20	8.5	1400	1000	50	51
DIN 582-M10-ST	DIN 582-M10-NI	M10	45	45	10	25	25	10	2300	1700	90	91
DIN 582-M12-ST	DIN 582-M12-NI	M12	54	53	12	30	30	11	3400	2400	160	162
DIN 582-M16-ST	DIN 582-M16-NI	M16	63	62	14	35	35	13	7000	5000	240	243
DIN 582-M20-ST	DIN 582-M20-NI	M20	72	71	16	40	40	16	12000	8600	360	364
DIN 582-M24-ST	DIN 582-M24-NI	M24	90	90	20	50	50	20	18000	12500	720	727
DIN 582-M30-ST	-	M30	108	109	24	65	60	25	32000	23000	1320	-
DIN 582-M36-ST	-	M36	126	128	28	75	70	30	46000	33000	2080	-

values for DIN 582-NI



STANDARD MACHINE ELEMENTS WORLDWIDE