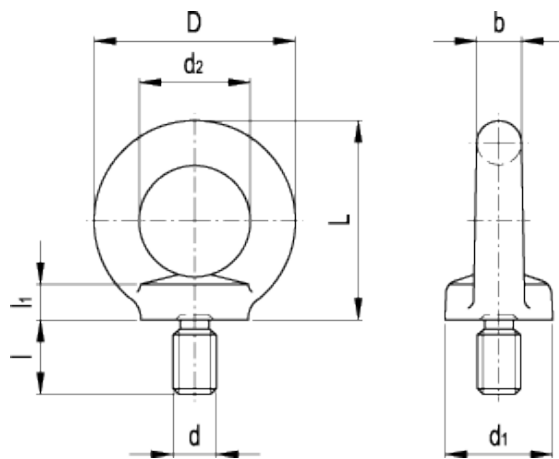


DIN 580 DIN 580-NI

Lifting male eye bolts



technical informations

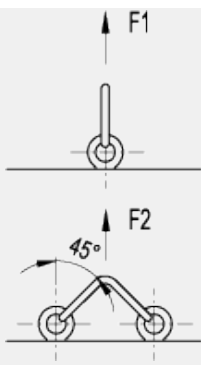
Material

- Execution ST: forged steel annealed body, zinc-plated blue passivated, machined contact face.
- Execution NI: forged AISI 304 stainless steel annealed body, machined contact face, passivated.

Features and applications

When installing DIN 580 male lifting eye bolts it is of utmost importance to ensure that the face is in firm contact with the mating face.

The values indicated in the here-under table are only applicable when the component attached to the ring is in steel, cast steel or cast iron. Side loads across the eye plane are not permitted for safety reasons.



Standard Elements		Main dimensions								F ₁	F ₂	Weight	
Description	Description	d	D	L	b	d ₁	d ₂	l ₁	l	[N]	[N]	g	g#
DIN 580-M8-ST	DIN 580-M8-NI	M8	36	36	8	20	20	6	13	1400	1000	60	61
DIN 580-M10-ST	DIN 580-M10-NI	M10	45	45	10	25	25	8	17	2300	1700	110	111
DIN 580-M12-ST	DIN 580-M12-NI	M12	54	53	12	30	30	10	20.5	3400	2400	180	181
DIN 580-M16-ST	DIN 580-M16-NI	M16	63	62	14	35	35	12	27	7000	5000	280	281
DIN 580-M20-ST	DIN 580-M20-NI	M20	72	71	16	40	40	14	30	12000	8600	450	451
DIN 580-M24-ST	DIN 580-M24-NI	M24	90	90	20	50	50	18	36	18000	12900	740	741
DIN 580-M30-ST	-	M30	108	109	24	65	60	22	45	32000	23000	1525	-
DIN 580-M36-ST	-	M36	126	128	28	75	70	26	54	46000	33000	2650	-

values for DIN 580-NI



STANDARD MACHINE ELEMENTS WORLDWIDE