

## Knurled nuts

Steel / Stainless Steel

### SPECIFICATION

#### Version in Steel

- Tensile strength class 5
- visible face fine turned
- blackened
- zinc plated, blue passivated **ZB**

#### Version in Stainless Steel AISI 303 NI

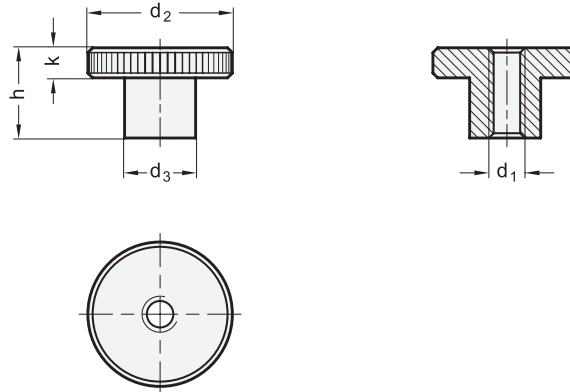
- matte shot-blasted

### INFORMATION

Flat knurled nuts DIN 466 are suitable for universal use and can be tightened and loosened easily without tools. A nut with thread M12 is also available in addition to the types defined in the DIN standard.

### TECHNICAL INFORMATION

- Stainless Steel characteristics (see page A26)
- Strength values of screws (see page A20)



### DIN 466

Description	d1	d2	d3	h	k	⚖️
DIN 466-M2	M 2	9	4.5	5.3	2	2
DIN 466-M2.5	M 2.5	11	5	6.5	2.5	3
DIN 466-M3	M 3	12	6	7.5	2.5	4
DIN 466-M4	M 4	16	8	9.5	3.5	6
DIN 466-M5	M 5	20	10	11.5	4	12
DIN 466-M6	M 6	24	12	15	5	20
DIN 466-M8	M 8	30	16	18	6	44
DIN 466-M10	M 10	36	20	23	8	84
DIN 466-M12	M 12	40	22	25	10	100

### DIN 466-ZB

Description	d1	d2	d3	h	k	⚖️
DIN 466-M2-ZB	M 2	9	4.5	5.3	2	2
DIN 466-M2.5-ZB	M 2.5	11	5	6.5	2.5	3
DIN 466-M3-ZB	M 3	12	6	7.5	2.5	4
DIN 466-M4-ZB	M 4	16	8	9.5	3.5	6
DIN 466-M5-ZB	M 5	20	10	11.5	4	12
DIN 466-M6-ZB	M 6	24	12	15	5	20
DIN 466-M8-ZB	M 8	30	16	18	6	44
DIN 466-M10-ZB	M 10	36	20	23	8	84
DIN 466-M12-ZB	M 12	40	22	25	10	100

### DIN 466-NI

### STAINLESS STEEL

Description	d1	d2	d3	h	k	⚖️
DIN 466-M2-NI	M 2	9	4.5	5.3	2	2
DIN 466-M2.5-NI	M 2.5	11	5	6.5	2.5	3
DIN 466-M3-NI	M 3	12	6	7.5	2.5	4
DIN 466-M4-NI	M 4	16	8	9.5	3.5	6
DIN 466-M5-NI	M 5	20	10	11.5	4	12
DIN 466-M6-NI	M 6	24	12	15	5	20
DIN 466-M8-NI	M 8	30	16	18	6	44
DIN 466-M10-NI	M 10	36	20	23	8	84
DIN 466-M12-NI	M 12	40	22	25	10	100