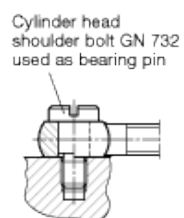
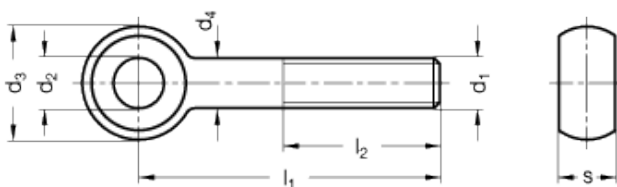


DIN 444

Eye screws



technical informations

Material

Turned and black-oxide steel, class 5.8 (tensile strength 500 N/mm²).

Special executions on request (For sufficient quantities)

Different threadings and lengths.

Features and applications

Precision type swing bolts DIN 444 are mainly used for jigs and fixtures.

Threads and thread lengths not listed in the above table are available on request.

Standard Elements	Main dimensions						Hole	Weight
Description	d ₁	l ₁	l ₂	d ₃ -0.3	s _{-0.15}	d ₄	d ₂ H7	g
DIN 444-M5-50	M5	50	32	12	6	5	5	9
DIN 444-M5-75	M5	75	32	12	6	5	5	11
DIN 444-M6-50	M6	50	32	14	7	6	6	14
DIN 444-M6-75	M6	75	32	14	7	6	6	20
DIN 444-M8-50	M8	50	32	18	9	8	8	26
DIN 444-M8-75	M8	75	32	18	9	8	8	36
DIN 444-M10-50	M10	50	40	20	12	10	10	38

DIN 444-M10-75	M10	75	40	20	12	10	10	52
DIN 444-M10-100	M10	100	40	20	12	10	10	68
DIN 444-M12-75	M12	75	40	25	14	12	12	80
DIN 444-M12-100	M12	100	40	25	14	12	12	98
DIN 444-M12-130	M12	130	40	25	14	12	12	120
DIN 444-M16-75	M16	75	50	32	17	16	16	146
DIN 444-M16-100	M16	100	50	32	17	16	16	183
DIN 444-M16-130	M16	130	50	32	17	16	16	220
DIN 444-M20-100	M20	100	63	40	22	20	18	305
DIN 444-M20-130	M20	130	63	40	22	20	18	366
DIN 444-M20-160	M20	160	63	40	22	20	18	438



ELESA and GANTER models all rights reserved in accordance with the law. Always mention the source when reproducing our drawings.

STANDARD MACHINE ELEMENTS WORLDWIDE