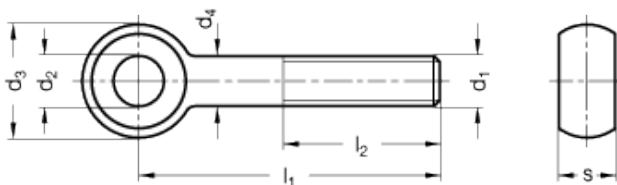
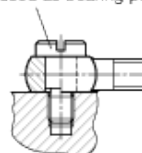


# DIN 444-NI

Eye screws



Cylinder head shoulder bolt GN 732 used as bearing pin



technical informations

**Material**

AISI 303 stainless steel, sandblasted matte finish.

*Special executions on request (For sufficient quantities)*

Different threadings and lengths.

**Features and applications**

DIN 444-NI eye screws are used mainly for assembly equipment and connections.

AISI 303 stainless steel, thanks to its high resistance to corrosion, allows the application of these eye screws on machines and equipment in those sectors where laws or particular hygienic, climatic and environmental factors make it mandatory to use corrosion resistant materials.

Standard Elements	Main dimensions					Hole	Weight	
Description	d <sub>1</sub>	l <sub>1</sub>	l <sub>2</sub>	d <sub>3</sub> -0.3	s <sub>-0.15</sub>	d <sub>4</sub>	d <sub>2</sub> H7	g
DIN 444-M5-50-NI	M5	50	32	12	6	5	5	10
DIN 444-M5-75-NI	M5	75	32	12	6	5	5	14
DIN 444-M6-50-NI	M6	50	32	14	7	6	6	14
DIN 444-M6-75-NI	M6	75	32	14	7	6	6	20
DIN 444-M8-50-NI	M8	50	32	18	9	8	8	26
DIN 444-M8-75-NI	M8	75	32	18	9	8	8	36

DIN 444-M10-50-NI	M10	50	40	20	12	10	10	38
DIN 444-M10-75-NI	M10	75	40	20	12	10	10	52
DIN 444-M10-100-NI	M10	100	40	20	12	10	10	68
DIN 444-M12-75-NI	M12	75	40	25	14	12	12	80
DIN 444-M12-100-NI	M12	100	40	25	14	12	12	98
DIN 444-M12-130-NI	M12	130	40	25	14	12	12	120
DIN 444-M16-75-NI	M16	75	50	32	17	16	16	146
DIN 444-M16-100-NI	M16	100	50	32	17	16	16	183
DIN 444-M16-130-NI	M16	130	50	32	17	16	16	220
DIN 444-M20-100-NI	M20	100	63	40	22	20	18	300
DIN 444-M20-130-NI	M20	130	63	40	22	20	18	315
DIN 444-M20-160-NI	M20	160	63	40	22	20	18	320



ELESA and GANTER models all rights reserved in accordance with the law. Always mention the source when reproducing our drawings.

**STANDARD MACHINE ELEMENTS WORLDWIDE**