

## Ball chains

### Technopolymer and stainless steel

#### CHAIN

Ball cable and coupling heads in acetal resin based (POM) technopolymer, black colour.

#### STANDARD EXECUTIONS

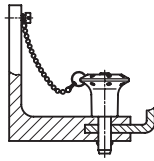
NERINOX treated stainless steel ring with two coils.

- **CT-S-2A**: cable with two clamping rings.
- **CT-S-A**: cable with one ring.
- **CT-S**: cable without rings.

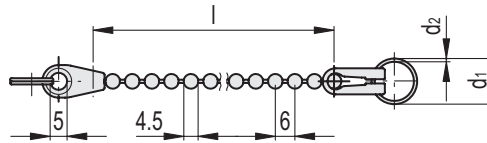
#### FEATURES AND APPLICATIONS

CT-S chains are characterised by great flexibility with regard to the various types of cables in both metal and polyethylene.

They are mainly used in combination with the different types of self-locking pins or in cases where you want to make small components or tools unmissable so that they are always available and at hand.



CT-S-2A



CT-S-2A

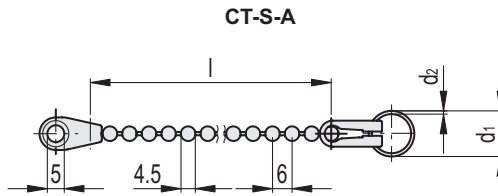
STAINLESS STEEL

Code	Description	d1	d2	l	Max. static load [N]	⚖️
76301	CT-S-2A-18-150	18	1.3	150	100	4
76302	CT-S-2A-24-150	24	1.5	150	100	5
76303	CT-S-2A-30-150	30	1.8	150	100	6
76306	CT-S-2A-18-200	18	1.3	200	100	6
76307	CT-S-2A-24-200	24	1.5	200	100	7
76308	CT-S-2A-30-200	30	1.8	200	100	8
76311	CT-S-2A-18-320	18	1.3	320	100	9
76312	CT-S-2A-24-320	24	1.5	320	100	10
76313	CT-S-2A-30-320	30	1.8	320	100	11
76316	CT-S-2A-18-500	18	1.3	500	100	13
76317	CT-S-2A-24-500	24	1.5	500	100	14
76318	CT-S-2A-30-500	30	1.8	500	100	15



8

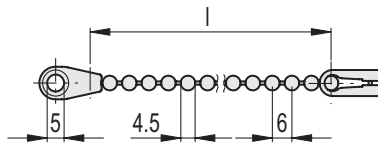
Indexing elements



**CT-S-A**

**STAINLESS STEEL**

Code	Description	d <sub>1</sub>	d <sub>2</sub>	l	Max. static load [N]	⚖️
76321	CT-S-A-18-150	18	1.3	150	100	3
76322	CT-S-A-24-150	24	1.5	150	100	4
76323	CT-S-A-30-150	30	1.8	150	100	5
76326	CT-S-A-18-200	18	1.3	200	100	5
76327	CT-S-A-24-200	24	1.5	200	100	6
76328	CT-S-A-30-200	30	1.8	200	100	7
76331	CT-S-A-18-320	18	1.3	320	100	8
76332	CT-S-A-24-320	24	1.5	320	100	9
76333	CT-S-A-30-320	30	1.8	320	100	10
76336	CT-S-A-18-500	18	1.3	500	100	12
76337	CT-S-A-24-500	24	1.5	500	100	13
76338	CT-S-A-30-500	30	1.8	500	100	14



**CT-S**

Code	Description	l	Max. static load [N]	⚖️
77016	CT-S-150	150	100	3
77021	CT-S-200	200	100	4
77033	CT-S-320	320	100	6
77051	CT-S-500	500	100	9