

## Lever latches with T-Handle

### Operation with key, technopolymer

#### HANDLE AND STATOR

Glass-fibre reinforced polyamide based (PA) technopolymer.

#### ROTOR

Chrome-plated zinc alloy.

#### FRONT PLATE

Stainless steel.

#### NUT

M22x1.5 technopolymer.

#### FLAT CLOSING LEVER

Zinc-plated steel, thickness 3 mm.

#### PACKING RING

NBR rubber.

#### SELF-TAPPING SCREW

Zinc-plated steel.

#### TWO KEYS

Nickel-plated brass, removable in two positions at 180°.

#### ROTATION

90° clockwise (right).

#### IP PROTECTION

IP 65 protection class, according to table EN 60529 (see page A23).

#### STANDARD EXECUTIONS

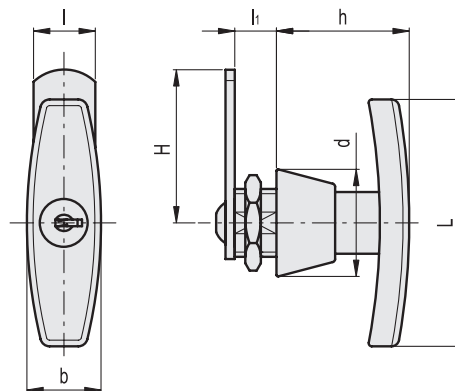
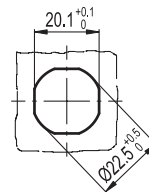
- **CSMT.**: lock with 400 different combinations. Each lock has a couple of keys with different combination.
- **CSMTU.**: lock with one combination. All locks have the same combination which can be opened with the same key.

#### SPECIAL EXECUTIONS ON REQUEST

Closing levers in other dimensions.



Drilling template



Code	Description	H	L	l	li	b	h	d	ΔΔ
421521	CSMT.50	50	80	20	13.5	24	43	37	107
421523	CSMTU.50	50	80	20	13.5	24	43	37	107

