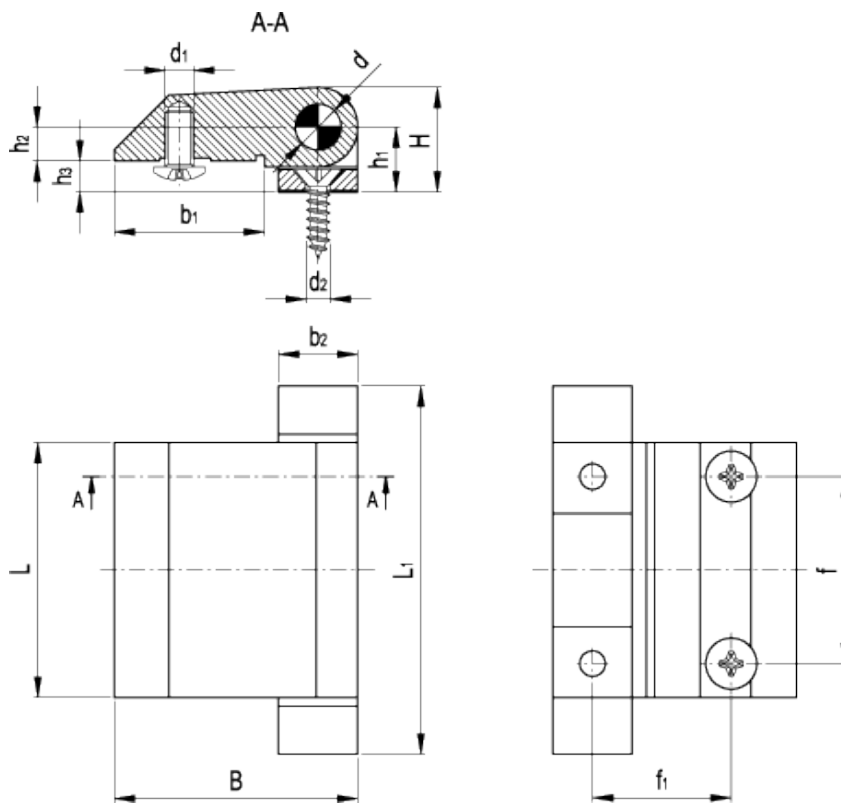


CMD-AL

Hinge
for thin doors



technical informations

Material

Anodised aluminium.

Colour

Natural, matte finish.

Rotation pin

AISI 303 stainless steel.

Guide bushings for pin

Polyamide based (PA) technopolymer.

Assembly

Self-tapping screws 4.2x15.9 DIN 7982, stainless steel (narrow body of the hinge) and M5x10 semi-rounded head screws, stainless steel (large body of the hinge), supplied.

Features and applications

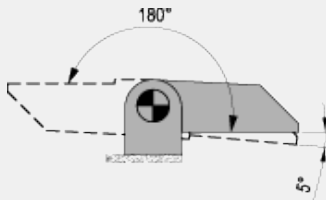
The hinge is made up of two bodies with different dimensions (a narrow one and a larger one). They can be assembled for example on structures with thin jambs and doors.

Rotation angle

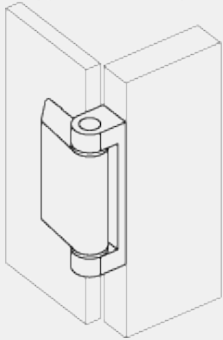
Max 180°, between 0° and 180°

(0° = condition where the two interconnected surfaces are on the same plane).

Do not exceed the rotation angle limit (see drawing) so as not to prejudice the hinge mechanical performance.



Application example



Standard Elements		Main dimensions											Fitting		Weight	
Code	Description	L	B	L ₁	f	f ₁	H	h ₁	h ₂	h ₃	b ₁	b ₂	d	d ₁	d ₂	g
428251	CMD-AL-45-SH-4-M5	45	43	65	33	24.5	18.5	11.5	6	5.5	26.5	14	8	M5	4.2	90



STANDARD MACHINE ELEMENTS WORLDWIDE