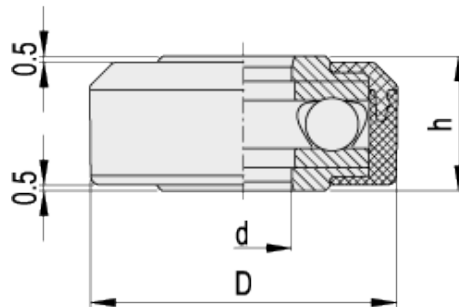


CMC

Torque amplifier collar



ELESA Original design



technical informations

Bearing case material

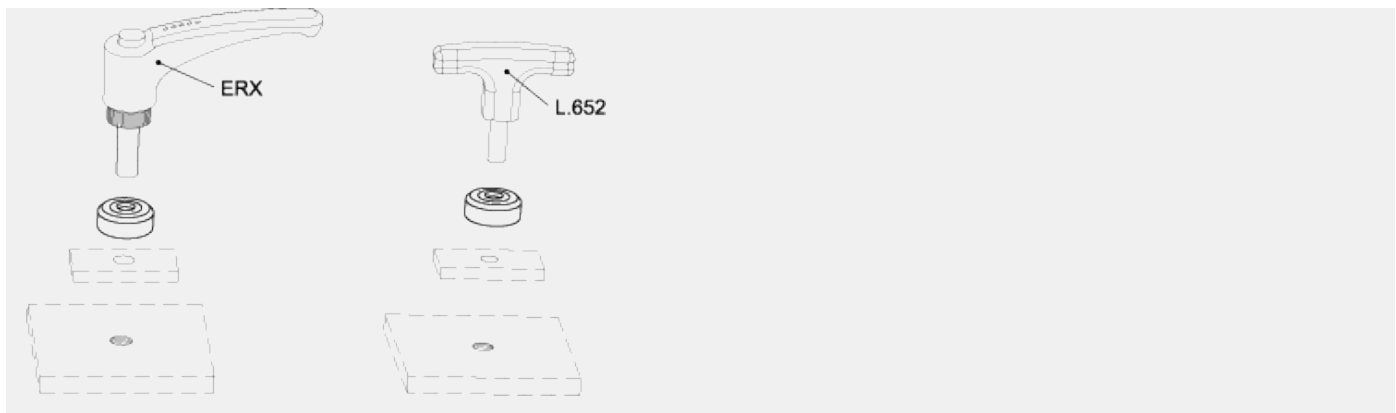
Glass-fibre reinforced polyamide based (PA) technopolymer, black colour, matte finish.

Standard executions

- CMC: AISI 52100 steel axial bearing, zinc-plated steel washers.
- CMC-SST: AISI 440 C stainless steel axial bearing, AISI 303 stainless steel washers.

Features and applications

Used in combination with clamping levers type ERX., ERW., MRX., ERF., clamping knobs type VCT.SOFT or handles type L.652, CMC torque amplifier collars double the clamping force applied at equal torque due to the presence of a bearing acting to reduce friction.



Standard Elements		Main dimensions			Weight
Code	Description	D	h	d	g
32401	CMC.32-8	32	14	8	38
32402	CMC.32-10	32	14	10	37
32403	CMC.32-12	32	14	12	36

Standard Elements		Main dimensions			Weight
Code	Description	D	h	d	g
32411	CMC.32-SST-8	32	14	8	38
32412	CMC.32-SST-10	32	14	10	37
32413	CMC.32-SST-12	32	14	12	36



ELESA and GANTER models all rights reserved in accordance with the law. Always mention the source when reproducing our drawings.

STANDARD MACHINE ELEMENTS WORLDWIDE