

## Locking bolt

### Technopolymer

#### MATERIAL

Glass-fibre reinforced polyamide based (PA) technopolymer with security anti-intrusion-profiled slot, black colour, matte finish.

#### LOCKING BAR

AISI 304 stainless steel with technopolymer push button. Side end in red colour.

#### STANDARD EXECUTIONS

- **CKE.40 CH:** pass-through holes for M5 cylindrical-head screws.
- **CKE.40 B:** brass bosses, threaded blind holes.

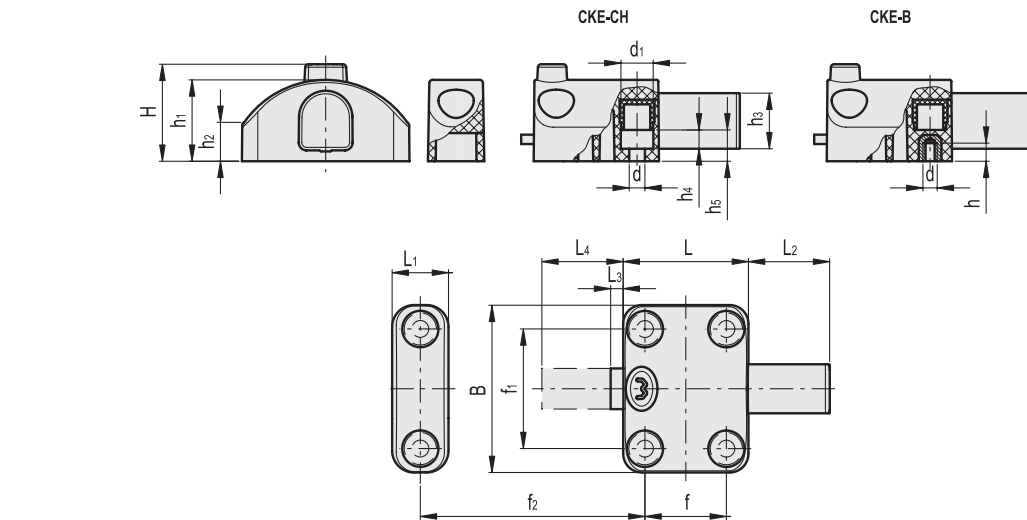
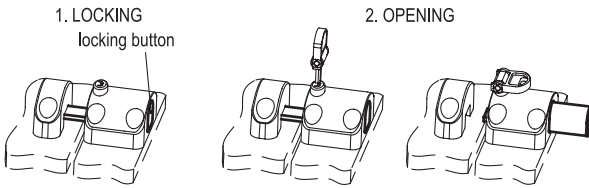
#### SECURITY KEY (TO BE ORDERED SEPARATELY)

- **CSN (code 6951):** acetal resin based (POM) technopolymer fold-away key, red colour, anti-intrusion-profiled stainless steel insert.
- **CSF (code 6952):** polyamide based (PA) technopolymer ball key, red colour, anti-intrusion-profiled stainless steel insert.
- **CSL (code 6953):** acetal resin based (POM) technopolymer size increased fold-away key, red colour, stainless steel insert.

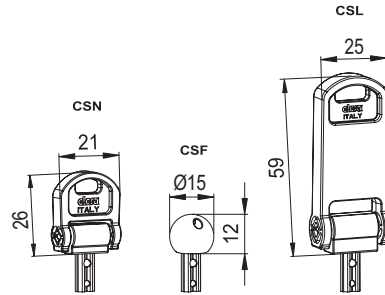
#### FUNCTIONING OF THE SAFETY DEVICE

Doors with CKE. locking bolt assembled can be opened only by authorised people provided with the proper anti-intrusion-profiled key.

1. Locking: press the locking button until the red side end of it disappears completely into the body and the device snaps. The key must not be inserted during locking operations.
2. Opening: insert the key (without turning it) and push to make the internal device snap.



ELESA Original design



CSL

CSN

CSF

CKE-CH

CKE-B

STAINLESS STEEL

Code	Description	H	B	d	d	h	L	L1	L2	L3	L4	d1	f	f1	f2	h1	h2	h3	h4	h5	⚙️
7901	CKE.40 CH-5	31	53.5	-	5.5	-	40	18	26	4	30	10	26	38	31-42	26	12	17.5	6	10	85
7905	CKE.40 B-M5	31	53.5	M5	-	6	40	18	26	4	30	-	26	38	31-42	26	12	17.5	-	-	100

