

## Lift-off hinges

For profiles, SUPER-Technopolymer

### MATERIAL

Glass-fibre reinforced polyamide (PA) SUPER-technopolymer, black or grey colour RAL 7040 (C33), matte finish.

### ROTATING PIN

Self-lubricating glass-fibre reinforced polyamide based (PA) technopolymer, black colour.

### STANDARD EXECUTION

Pass-through holes for M6 countersunk head screws.

- **CFGY-D**: rotation pin fitted on the right hinge body.
- **CFGY-S**: rotation pin fitted on the left hinge body.

### FEATURES AND APPLICATIONS

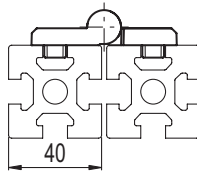
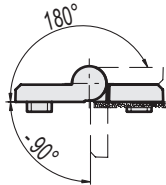
This type of hinge can be used with profiles of 40 mm, with slot dimensions from 8 to 10 mm.

### ROTATION ANGLE (APPROXIMATE VALUE)

Max 270° (-90° and +180° being 0° the condition where the two interconnected surfaces are on the same plane).

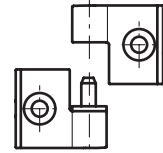
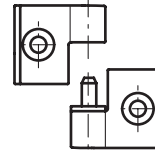
Do not exceed the rotation angle limit so as not to prejudice the hinge mechanical performance.

To choose the convenient type and the right number of hinges for your application, see the Guidelines (see page -).

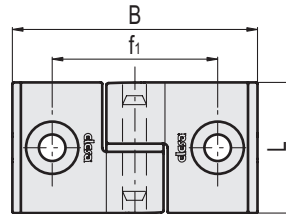
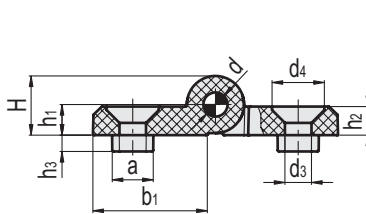


CFGY-D

CFGY-S



Resistance tests	AXIAL STRESS		RADIAL STRESS		90° ANGLED STRESS	
Description	Maximum working load Ea [N]	Load at breakage Ra [N]	Maximum working load Er [N]	Load at breakage Rr [N]	Maximum working load E90 [N]	Load at breakage R90 [N]
CFGY.40/40	190	1020	190	930	170	830



### CFGY-D

### CFGY-D

Code	Description	Code	Description	L	B	f1 ±0.25	H	h1	h2	h3	a	b1	d	d3	d4	C# [Nm]		
423981	CFGY.40/40 SH-6-D-8	423981-C33	CFGY.40/40 SH-6-D-8-C33	32	60	40.5	14.5	7.5	7	4	8	28	6	6.5	12.5	5	20	
423985	CFGY.40/40 SH-6-D-10	423985-C33	CFGY.40/40 SH-6-D-10-C33	32	60	40.5	14.5	7.5	7	4	10	28	6	6.5	12.5	5	20	

### CFGY-S

### CFGY-S

Code	Description	Code	Description	L	B	f1 ±0.25	H	h1	h2	h3	a	b1	d	d3	d4	C# [Nm]		
423982	CFGY.40/40 SH-6-S-8	423982-C33	CFGY.40/40 SH-6-S-8-C33	32	60	40.5	14.5	7.5	7	4	8	28	6	6.5	12.5	5	20	
423986	CFGY.40/40 SH-6-S-10	423986-C33	CFGY.40/40 SH-6-S-10-C33	32	60	40.5	14.5	7.5	7	4	10	28	6	6.5	12.5	5	20	

# Suggested tightening torque for assembly screws.

